

ELBERTON, GEORGIA

AL-6567 (FAA)

23278

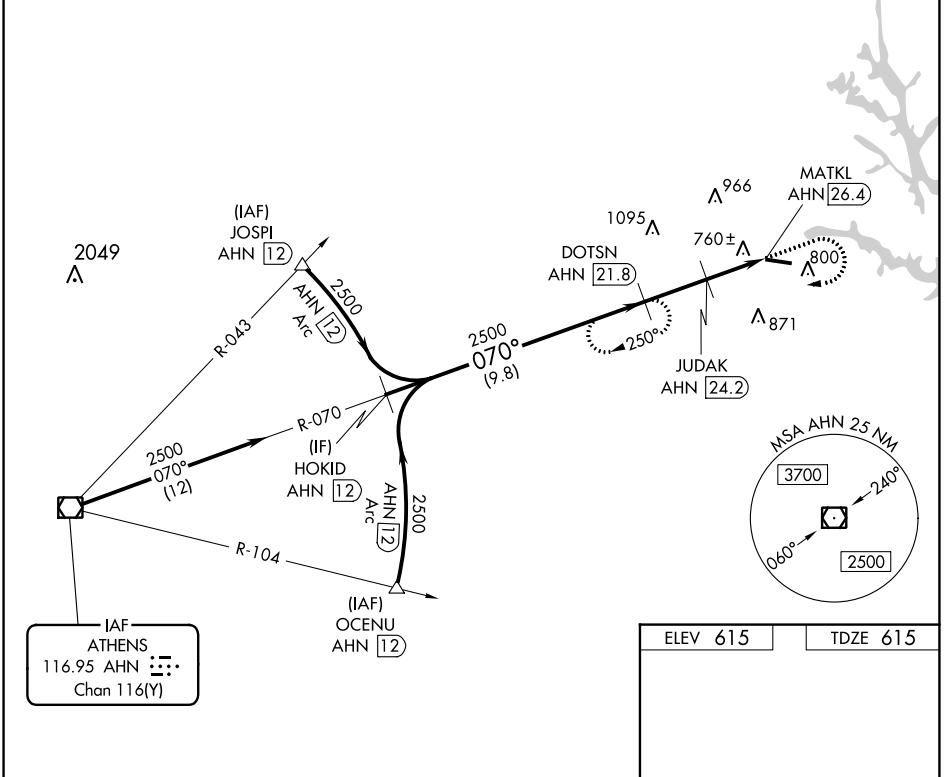
VOR/DME AHN 116.95 Chan 116 (Y)	APP CRS 070°	Rwy Idg TDZE Apt Elev 5004 615 615
---	------------------------	--

VOR RWY 11

ELBERT COUNTY-PATZ FLD (EBA)

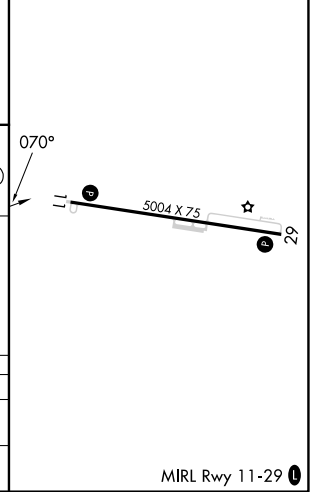
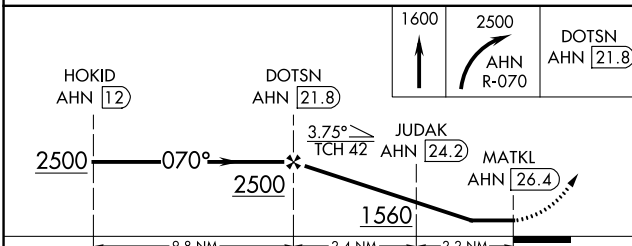
DME required.	MISSED APPROACH: Climb to 1600 then climbing right turn to 2500 on AHN VOR/DME R-070 to DOTSN/AHN 21.8 DME and hold.
---------------	--

AWOS-3 118.15	ATLANTA CENTER 127.5 316.05	UNICOM 122.8 (CTAF) 1
-------------------------	---------------------------------------	--



IAF
ATHENS
116.95 AHN
Chan 116(Y)

ELEV 615	TDZE 615
----------	----------



CATEGORY	A	B	C	D
S-11	1200-1	585 (600-1)	1200-1 ³ / ₄ 585 (600-1 ³ / ₄)	NA
C CIRCLING	1200-1 585 (600-1)	1200-1 ¹ / ₄ 585 (600-1 ¹ / ₄)	1280-2 665 (700-2)	NA

MIRL Rwy 11-29 **1**

ELBERTON, GEORGIA
Amdt 5 05OCT23

34°06'N-82°49'W

ELBERT COUNTY-PATZ FLD (EBA)

VOR RWY 11

SE-4, 03 OCT 2024 to 31 OCT 2024

SE-4, 03 OCT 2024 to 31 OCT 2024