

RNAV (GPS) RWY 16

ANSON COUNTY/JEFF CLOUD FLD (A/F P)

APP CRS	Rwy Idg	5498
162°	TDZE	300
	Apt Elev	300

RNP APCH - GPS.

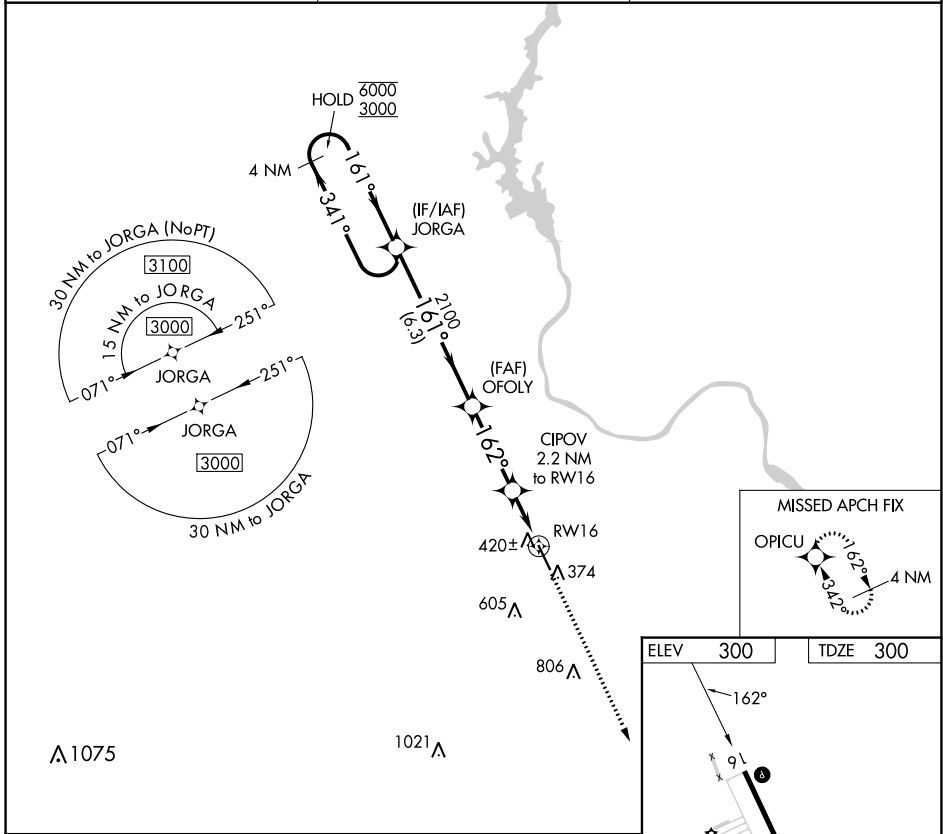
▼ Procedure NA at night.
▲ Rwy 16 helicopter visibility reduction below 1 SM NA.

MISSED APPROACH: Climb to 3000 direct OPICU and hold.

AWOS-3
119.325

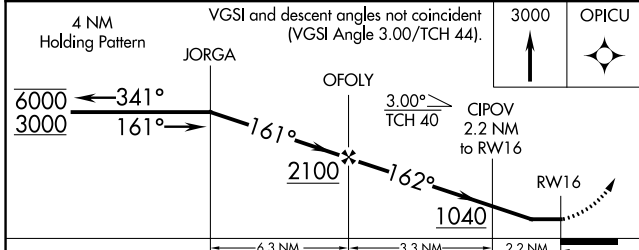
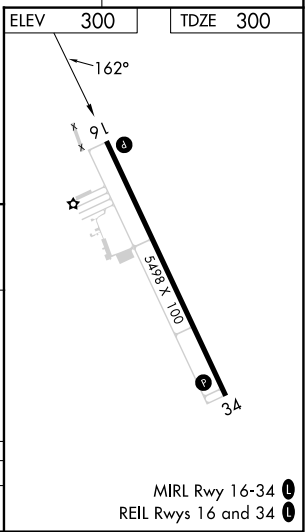
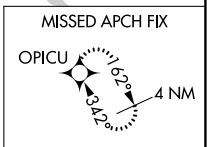
CHARLOTTE APP CON
120.05 307.8

UNICOM
122.8 (CTAF) 0



SE-2, 03 OCT 2024 to 31 OCT 2024

SE-2, 03 OCT 2024 to 31 OCT 2024



CATEGORY	A	B	C	D
LNAV MDA		680-1	380 (400-1)	

MIRL Rwy 16-34 **0**
 REIL Rwy 16 and 34 **0**