

VORTAC FGT 115.7 Chan 104	APP CRS 085°	Rwy Idg 4099 TDZE 961 Apt Elev 961
-----------------------------------------------	------------------------	---------------------------------------------------------------

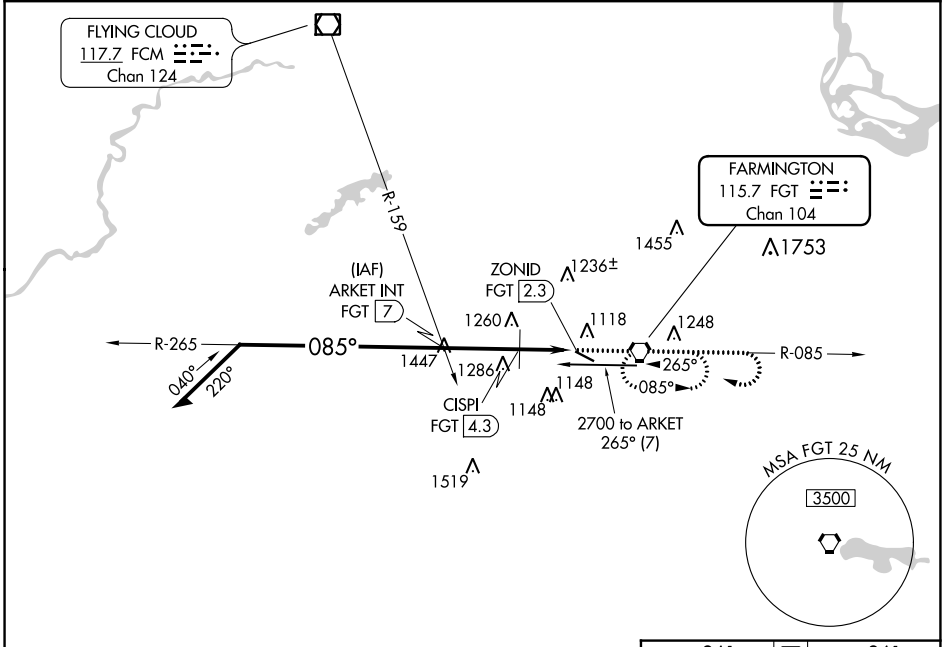
VOR RWY 12

AIRLAKE (LVN)

⚠ Rwy 12 helicopter visibility reduction below 1 SM NA. Straight-in Rwy 12, Circling Rwy 12 at night, operational VGSI required, remain on or above VGSI glidepath until threshold.

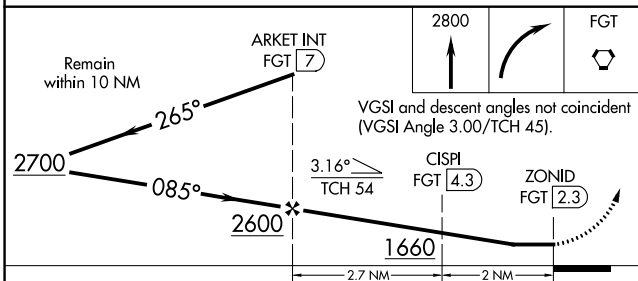
MISSED APPROACH: Climb to 2800 then right turn direct FGT VORTAC and hold.

AWOS-3 118.0	MINNEAPOLIS APP CON 134.7 284.7	CLNC DEL 118.95	UNICOM 123.0 (CTAF) 0
------------------------	-------------------------------------------	---------------------------	---------------------------------



NC-1, 03 OCT 2024 to 31 OCT 2024

NC-1, 03 OCT 2024 to 31 OCT 2024



ELEV 961 **D** TDZE 961

CATEGORY	A	B	C	D
S-12	1660-1	699 (700-1)	1660-2	699 (700-2)
C CIRCLING	1660-1	699 (700-1)	1660-2 699 (700-2)	1700-2¼ 739 (800-2¼)
CISPI FIX MINIMUMS				
S-12	1520-1	559 (600-1)	1520-1½	559 (600-1½)
C CIRCLING	1520-1	559 (600-1)	1660-2 699 (700-2)	1700-2¼ 739 (800-2¼)

