

| | | | |
|---------------------------|------------------------|-----------------------------|---|
| LOC I-RGK 110.1 | APP CRS 091° | Rwy Idg TDZE Apt Elev | 5010 778 778 |
|---------------------------|------------------------|-----------------------------|---|

ILS or LOC RWY 9

RED WING RGNL (RGK)

ADF Required. When local altimeter setting not received, use South St. Paul altimeter setting; increase S-ILS 9 DA to 1050 feet; increase all MDA 80 feet and visibility S-LOC 9 Cat C/D 1/8 SM and Circling Cat B/C 1/4 SM. For inop MALSRS, increase S-LOC 9 Cat C/D visibility 1/4 mile. For inop MALSRS when using South St. Paul altimeter setting, increase S-ILS 9 all Cats visibility 3/8 mile, and S-LOC 9 Cat C/D visibility 3/4 mile.

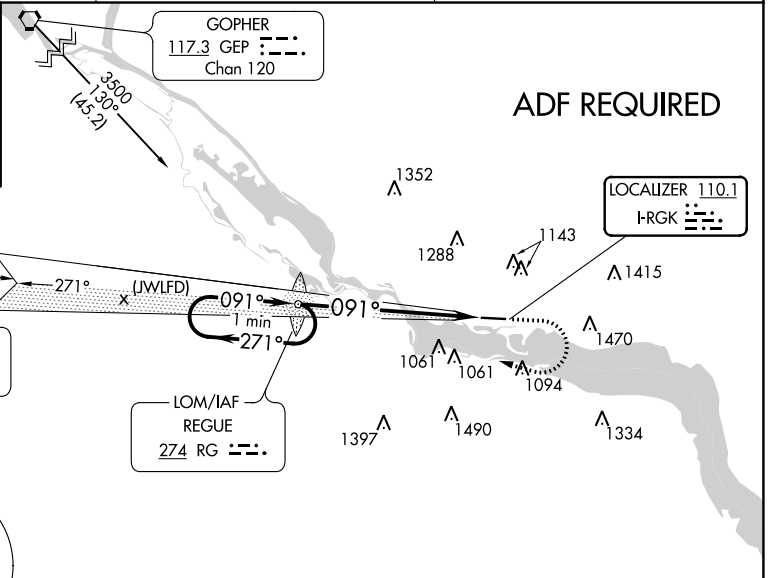
MALSRS
MISSED APPROACH:
 Climb to 2000 then climbing right turn to 3000 direct REGUE LOM and hold.

| | | |
|-------------------------|--|--------------------------------|
| AWOS-3 119.25 | MINNEAPOLIS APP CON 121.2 335.65 | UNICOM 123.05 (CTAF) |
|-------------------------|--|--------------------------------|

ALTERNATE MISSED APCH FIX

FARMINGTON
 115.7 FGT
 Chan 104

265° R-085
 085°

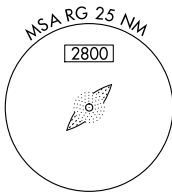


ADF REQUIRED

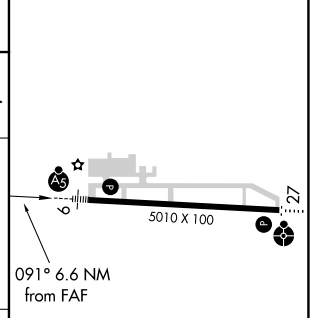
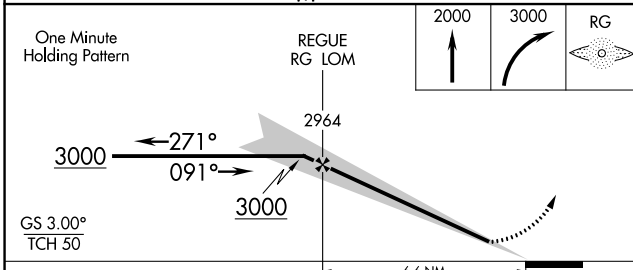
3000 089° (23)

FARMINGTON
 115.7 FGT
 Chan 104

LOM/IAF
 REGUE
 274 RG



| | |
|----------|----------|
| ELEV 778 | TDZE 778 |
|----------|----------|



| CATEGORY | A | B | C | D |
|----------|---------------------------|-----------------------------|-------------------------------|-----------------|
| S-ILS 9 | 978-1/2 200 (200-1/2) | | | |
| S-LOC 9 | 1520-1/2 742 (800-1/2) | 1520-3/4 742 (800-3/4) | 1520-1 3/4 862 (900-2 1/2) | 742 (800-1 1/4) |
| CIRCLING | 1520-1 742 (800-1) | 1640-2 1/2 1002 (1100-3) | | 1780-3 |

| | | | | | |
|---------------|-------------------|------|------|------|------|
| HIRL Rwy 9-27 | FAF to MAP 6.6 NM | | | | |
| Knots | 60 | 90 | 120 | 150 | 180 |
| Min:Sec | 6:36 | 4:24 | 3:18 | 2:38 | 2:12 |

NC-1, 03 OCT 2024 to 31 OCT 2024

NC-1, 03 OCT 2024 to 31 OCT 2024