

APP CRS	Rwy Idg	5010
271°	TDZE	777
	Apt Elev	778

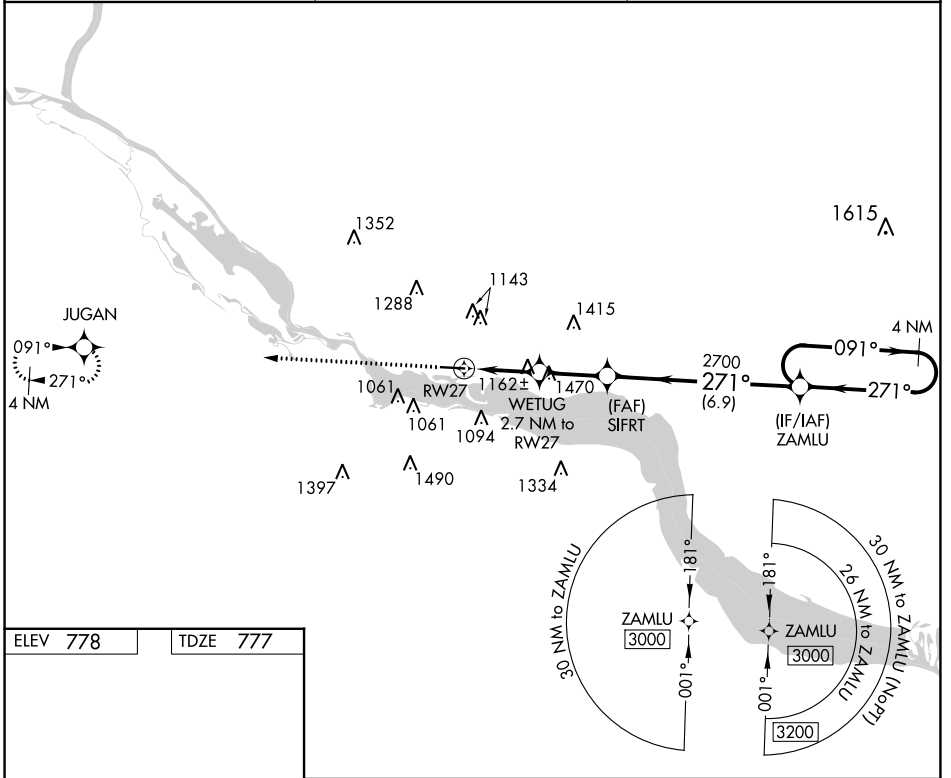
RNAV (GPS) RWY 27

RED WING RGNL (RGK)

⚠ DME/DME RNP-0.3 NA. VDP NA with South St. Paul altimeter setting. When local altimeter setting not received, use South St. Paul altimeter setting; increase all MDA 80 feet and visibility LNAV Cat C and Circling Cat C ½ SM and Circling Cat A/B ¼ SM. Helicopter visibility reduction below ¾ SM NA. Inop table does not apply to LNAV Cat C.

ODALS MISSED APPROACH: Climb to 3000 direct JUGAN and hold.

AWOS-3 119.25	MINNEAPOLIS APP CON 121.2 335.65	UNICOM 123.05 (CTAF) 0
-------------------------	--	----------------------------------



ELEV 778 TDZE 777

Diagram of RWY 27 showing dimensions: 5010 x 100. Orientation: 271° to RW27.

HIRL Rwy 9-27 0

CATEGORY	A	B	C	D
	1520-¾ 743 (800-¾)	1520-1¼ 743 (800-1¼)	1520-2 743 (800-2)	NA
CIRCLING	1520-1 742 (800-1)		1640-2½ 862 (900-2½)	NA

NC-1, 03 OCT 2024 to 31 OCT 2024

NC-1, 03 OCT 2024 to 31 OCT 2024