

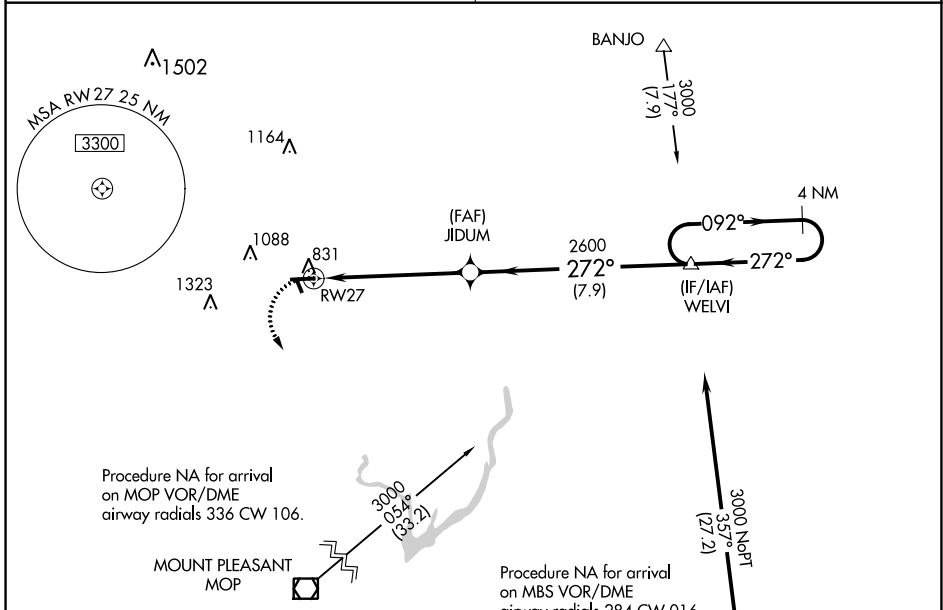
WAAS CH <b>99326</b> <b>W27A</b>	APP CRS <b>272°</b>	Rwy ldg <b>4699</b> TDZE <b>773</b> Apt Elev <b>774</b>
--	------------------------	---

# RNAV (GPS) RWY 27

GLADWIN ZETTEL MEML (GDW)

RNP APCH - GPS.		MISSED APPROACH: Climbing left turn to 2600 direct WHIPP and hold.
<p><b>NA</b> Circling NA to Rwys 15 and 33. Rwy 27 helicopter visibility reduction below 1 SM NA. Procedure NA at night. Use Mount Pleasant altimeter setting; when not received, use Midland altimeter setting and increase all MDA 20 feet; increase LP and LNAV Cats C/D visibility 1/8 SM.</p>		

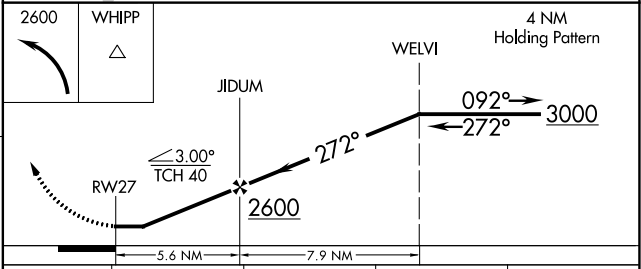
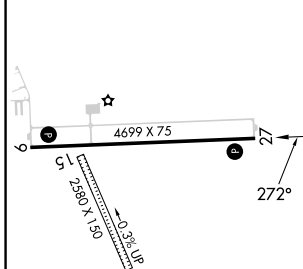
GREAT LAKES APP CON* <b>126.45 235.625</b>	UNICOM <b>122.8 (CTAF)</b>
---	-------------------------------



Procedure NA for arrival on MOP VOR/DME airway radials 336 CW 106.

Procedure NA for arrival on MBS VOR/DME airway radials 284 CW 016.

ELEV 774	TDZE 773
----------	----------



CATEGORY	A	B	C	D
LP MDA	1280-1	507 (600-1)	1280-1 3/8	507 (600-1 3/8)
LNAV MDA	1280-1	507 (600-1)	1280-1 3/8	507 (600-1 3/8)
CIRCLING	1420-1 646 (700-1)	1500-1 726 (800-1)	1520-2 1/4 746 (800-2 1/4)	1700-3 926 (1000-3)

MIRL Rwy 9-27  
REIL Rwy 9 and 27

EC-1, 03 OCT 2024 to 31 OCT 2024

EC-1, 03 OCT 2024 to 31 OCT 2024