

WAAS CH <b>58308</b> <b>W18A</b>	APP CRS <b>176°</b>	Rwy ldg <b>5200</b> TDZE <b>826</b> Apt Elev <b>831</b>
--	------------------------	---

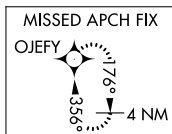
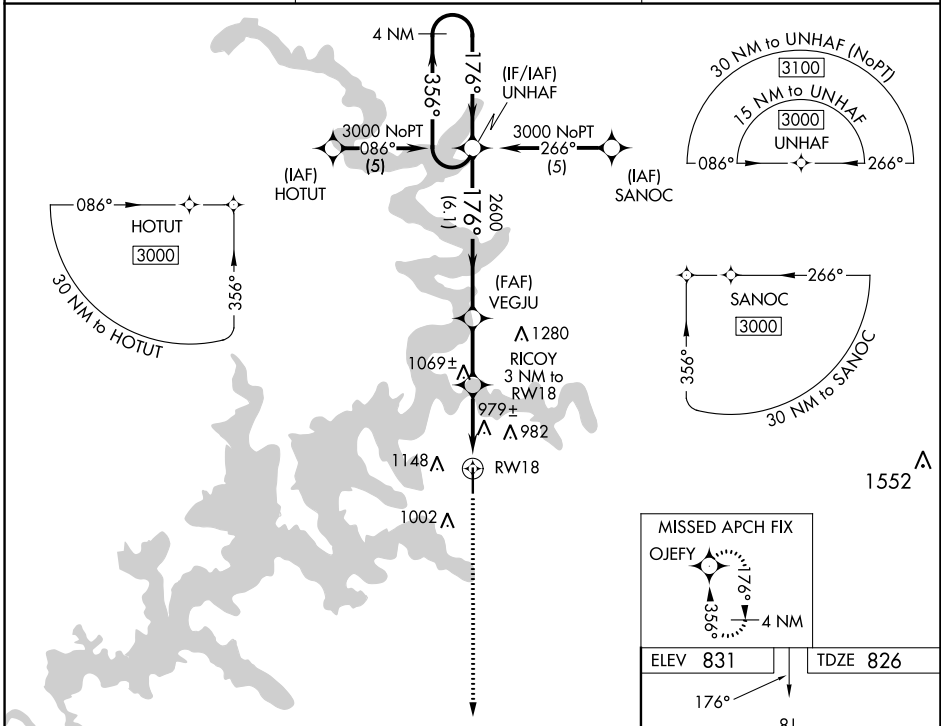
# RNAV (GPS) RWY 18

GROVE RGNL (G.MJ)

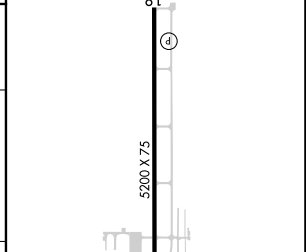
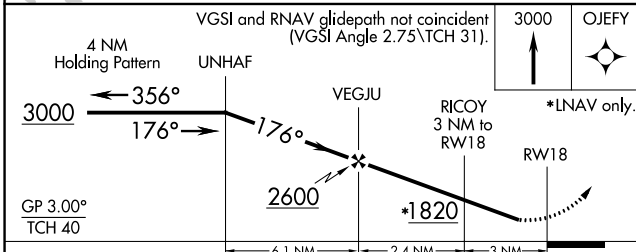
For uncompensated Baro-VNAV systems, LNAV/VNAV NA below -16°C (4°F) or above 54°C (130°F). DME/DME RNP-0.3 NA. Visibility reduction by helicopters NA.

MISSED APPROACH: Climb to 3000 direct OJEFY and hold.

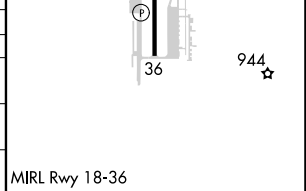
AWOS-3PT <b>119.025</b>	KANSAS CITY CENTER <b>128.6 282.325</b>	UNICOM <b>122.8</b> (CTAF)
----------------------------	--	-------------------------------



ELEV 831	TDZE 826
----------	----------



CATEGORY	A	B	C	D
LPV DA	1153-1¼	327 (400-1¼)		NA
LNAV/VNAV DA	1346-2	520 (600-2)		NA
LNAV MDA	1240-1	414 (500-1)	1240-1¼ 414 (500-1¼)	NA
CIRCLING	1500-1	669 (700-1)	1500-1¾ 669 (700-1¾)	NA



SC-1, 03 OCT 2024 to 31 OCT 2024

SC-1, 03 OCT 2024 to 31 OCT 2024