


LOC I-AEG 110.1	APP CRS 215°	Rwy Idg TDZE Apt Elev	7398 5817 5837
---------------------------	------------------------	-----------------------------	---

ILS or LOC RWY 22

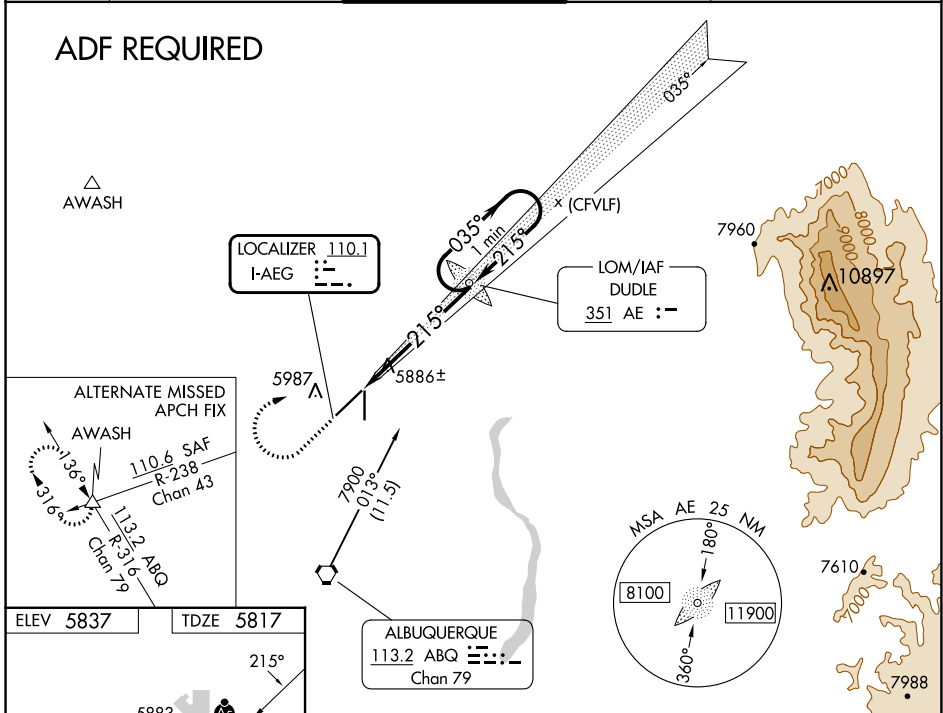
DOUBLE EAGLE II (A/E/G)

NA When local altimeter setting not received, use Albuquerque Intl Suport altimeter setting and increase all DA 94 feet, increase all MDA 100 feet, and increase visibility S-LOC 22 Cats C/D ¼ mile, Circling Cats C/D ½ mile. For inop MALSRR when using Albuquerque Intl Suport altimeter setting, increase visibility S-ILS 22 all Cats ¾ mile.

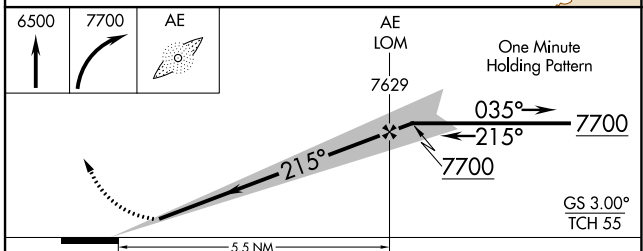
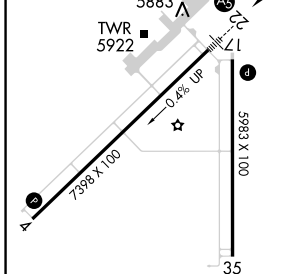
MALSRR  **MISSED APPROACH:** Climb to 6500 then climbing right turn 7700 direct DUDLE LOM and hold.

ATIS 119.025	ALBUQUERQUE APP CON 127.4 253.5	DOUBLE EAGLE II TOWER * 120.15 (CTAF)	GND CON 121.625	CLNC DEL 124.8 (When twr closed)
------------------------	---	---	---------------------------	---

ADF REQUIRED



ELEV 5837	TDZE 5817
-----------	-----------



REIL Rwy 17 and 35 **1**

MIRL Rwy 4-22 and 17-35 **1**

FAF to MAP 5.5 NM

Knots	60	90	120	150	180
Min:Sec	5:30	3:40	2:45	2:12	1:50

CATEGORY	A	B	C	D
S-ILS 22	6017-½ 200 (200-½)			
S-LOC 22	6140-½ 323 (400-½)			
CIRCLING	6400-1	563 (600-1)	6420-1½ 583 (600-1½)	6640-2½ 803 (900-2½)

SW-1, 03 OCT 2024 to 31 OCT 2024

SW-1, 03 OCT 2024 to 31 OCT 2024