


WAAS CH 42539 W22A	APP CRS 215°	Rwy Idg TDZE Apt Elev	7398 5817 5837
--	------------------------	-----------------------------	---

RNAV (GPS) RWY 22

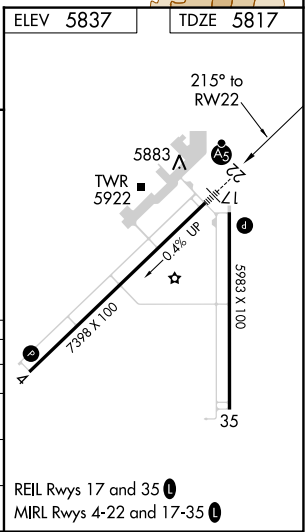
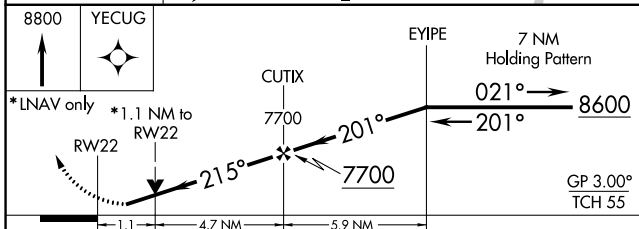
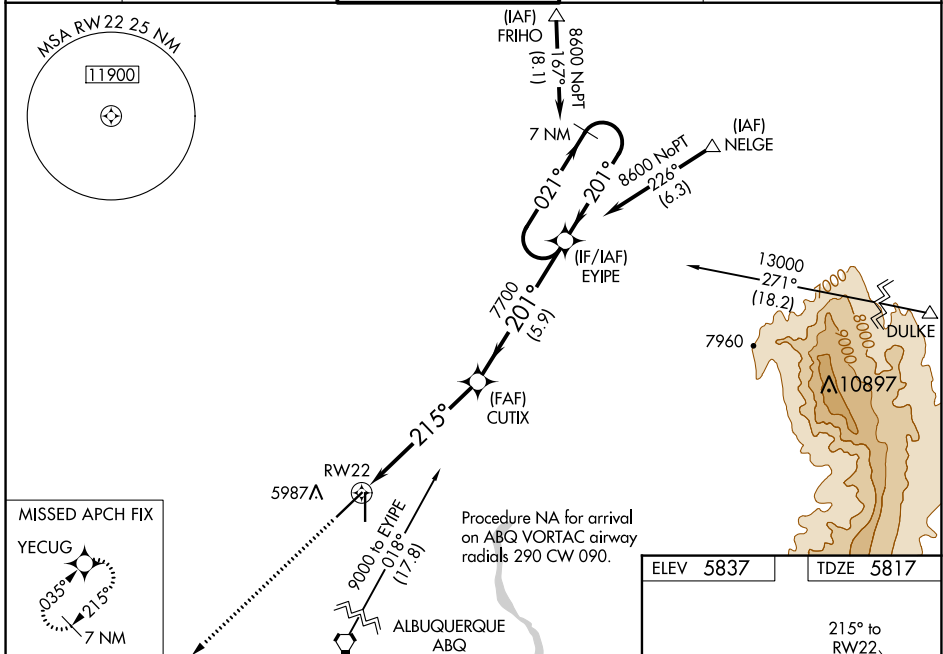
DOUBLE EAGLE II (A/E/G)

⚠ For uncompensated Baro-VNAV systems, LNAV/VNAV NA below -26°C (-14°F) or above 46°C (114 °F). DME/DME RNP-0.3 NA. When local altimeter setting not received, use Albuquerque Intl Sunport altimeter setting and increase LPV DA to 6111, LNAV-VNAV DA to 6234; increase all MDA 100 feet, and increase LNAV/VNAV visibility all Cats and LNAV Cat C/D visibility 3/8 mile and Circling Cat C/D visibility 1/2 mile. For inop MALS, increase LNAV/VNAV all Cats visibility to 1 mile. For inop MALS when using Albuquerque Intl Sunport altimeter setting, increase LPV all Cats visibility to 1 mile and LNAV/VNAV all Cats and LNAV Cat C/D visibility to 1 3/8 mile.

MALS 

MISSED APPROACH:
Climb to 8800 direct YECUG and hold.

ATIS 119.025	ALBUQUERQUE APP CON 127.4 253.5	DOUBLE EAGLE II TOWER * 120.15 (CTAF) 	GND CON 121.625	CLNC DEL 124.8 (When twr closed)
------------------------	---	---	---------------------------	---



CATEGORY	A	B	C	D
LPV DA		6017-1/2	200 (200-1/2)	
LNAV/VNAV DA		6140-5/8	323 (400-3/8)	
LNAV MDA	6200-1/2	383 (400-1/2)	6200-5/8	383 (400-5/8)
C CIRCLING	6400-1	563 (600-1)	6420-1 1/2	6640-2 1/2
			583 (600-1 1/2)	803 (900-2 1/2)

SW-1, 03 OCT 2024 to 31 OCT 2024

SW-1, 03 OCT 2024 to 31 OCT 2024