

| | | |
|--|------------------------|---|
| WAAS CH 62899 W18A | APP CRS 177° | Rwy Idg TDZE 700 Apt Elev 700 |
|--|------------------------|---|

RNAV (GPS) RWY 18R

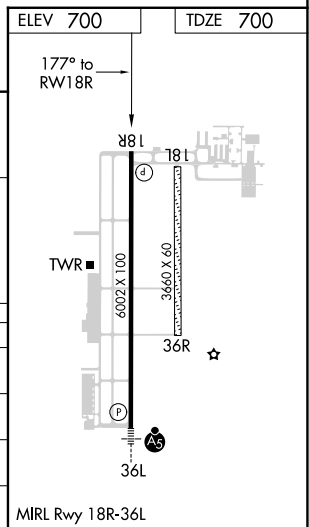
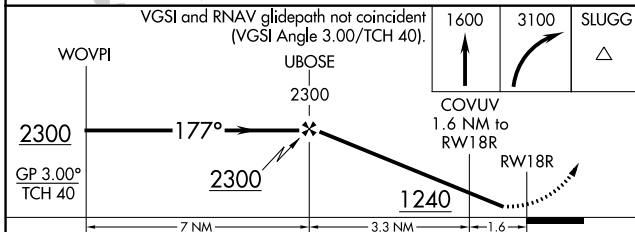
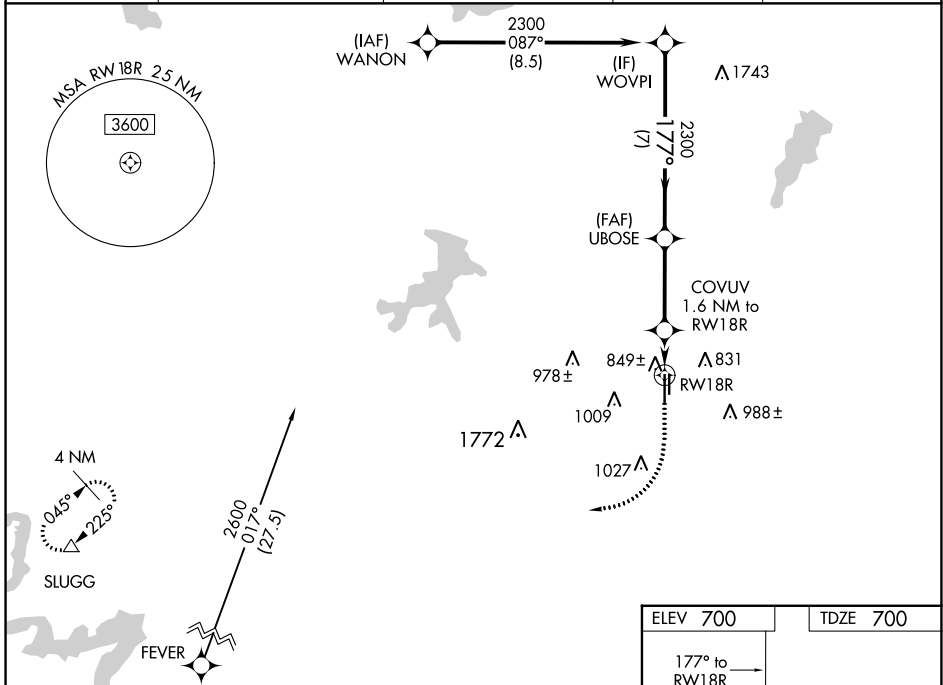
FORT WORTH SPINKS (FWS)

RNP APCH-GPS.

⚠ Circling NA west of Rwy 18R-36L. Rwy 18R helicopter visibility reduction below $\frac{3}{4}$ NA. For uncompensated Baro-VNAV systems, LNAV/VNAV NA below -16°C or above 54°C.

MISSED APPROACH: Climb to 1600 then climbing right turn to 3100 direct SLUGG and hold.

| | | | | |
|------------------------|--|---|---------------------------|------------------------|
| ATIS 120.025 | REGIONAL APP CON 135.975 379.9 | SPINKS TOWER * 124.625 (CTAF) 0 | GND CON 119.475 | UNICOM 122.7 |
|------------------------|--|---|---------------------------|------------------------|



| CATEGORY | A | B | C | D |
|--------------|--------------------|---|---|---|
| LPV DA | 950- $\frac{3}{4}$ | | 250 (300- $\frac{3}{4}$) | |
| LNAV/VNAV DA | 1030-1 | | 330 (400-1) | |
| LNAV MDA | 1100-1 400 (400-1) | | 1100-1 $\frac{1}{8}$ 400 (400-1 $\frac{1}{8}$) | |
| CIRCLING | 1200-1 500 (500-1) | | 1340-1 $\frac{3}{4}$ 640 (700-1 $\frac{3}{4}$) 1340-2 640 (700-2) | |

SC-2, 03 OCT 2024 to 31 OCT 2024

SC-2, 03 OCT 2024 to 31 OCT 2024