

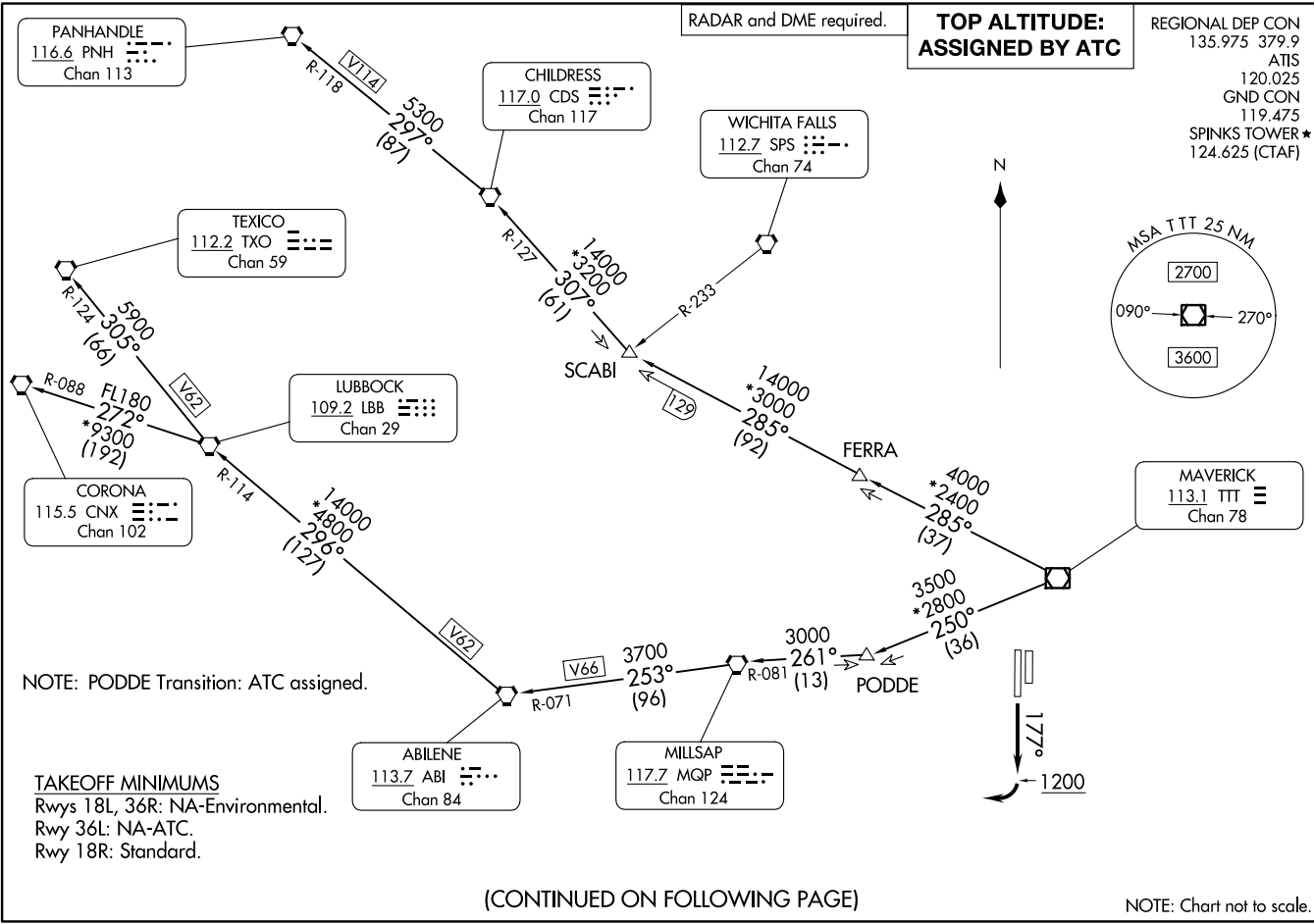
WORTH ONE DEPARTURE
(WORTH1.TTT) 251AN24

FORT WORTH, TEXAS
FORT WORTH SPINKS (F'W'S)

(WORTH1.TTT) 24025
WORTH ONE DEPARTURE

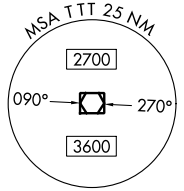
AL-6917 (FAA)

FORT WORTH SPINKS (F'W'S)
FORT WORTH, TEXAS



**TOP ALTITUDE:
ASSIGNED BY ATC**

REGIONAL DEP CON
135.975 379.9
ATIS
120.025
GND CON
119.475
SPINKS TOWER*
124.625 (CTAF)



NOTE: PODDE Transition: ATC assigned.

TAKEOFF MINIMUMS
Rwys 18L, 36R: NA-Environmental.
Rwy 36L: NA-ATC.
Rwy 18R: Standard.

(CONTINUED ON FOLLOWING PAGE)

NOTE: Chart not to scale.

WORTH ONE DEPARTURE



DEPARTURE ROUTE DESCRIPTION

TAKEOFF RUNWAY 18R: Climb on heading 177° to 1200 before turning right.

When entering controlled airspace, fly assigned heading for RADAR vectors to appropriate route. Maintain ATC assigned altitude.

ABILENE TRANSITION (WORTH1.ABI): From over TTT VOR/DME on TTT R-250 to PODDE, then on MQP R-081 to MQP VORTAC, then on MQP R-253 and ABI R-071 to ABI VORTAC.

CHILDRESS TRANSITION (WORTH1.CDS): From over TTT VOR/DME on TTT R-285 to SCABI, then on CDS R-127 to CDS VORTAC.

CORONA TRANSITION (WORTH1.CNX): From over TTT VOR/DME on TTT R-250 to PODDE, then on MQP R-081 to MQP VORTAC, then on MQP R-253 and ABI R-071 to ABI VORTAC, then on ABI R-296 and LBB R-114 to LBB VORTAC, then on LBB R-272 and CNX R-088 to CNX VORTAC.

LUBBOCK TRANSITION (WORTH1.LBB): From over TTT VOR/DME on TTT R-250 to PODDE, then on MQP R-081 to MQP VORTAC, then on MQP R-253 and ABI R-071 to ABI VORTAC, then on ABI R-296 and LBB R-114 to LBB VORTAC.

PANHANDLE TRANSITION (WORTH1.PNH): From over TTT VOR/DME on TTT R-285 to SCABI, then on CDS R-127 to CDS VORTAC, then on CDS R-297 and PNH R-118 to PNH VORTAC.

PODDE TRANSITION (WORTH1.PODDE): From over TTT VOR/DME on TTT R-250 to PODDE.

TEXICO TRANSITION (WORTH1.TXO): From over TTT VOR/DME on TTT R-250 to PODDE, then on MQP R-081 to MQP VORTAC, then on MQP R-253 and ABI R-071 to ABI VORTAC, then on ABI R-296 and LBB R-114 to LBB VORTAC, then on LBB R-305 and TXO R-124 to TXO VORTAC.

SC-2, 03 OCT 2024 to 31 OCT 2024

SC-2, 03 OCT 2024 to 31 OCT 2024