

LOC/DME I-HWGW <b>110.7</b> Chan <b>44</b>	APP CRS <b>120°</b>	Rwy Idg <b>12L</b>	12R <b>5000</b>
		TDZE <b>2189</b>	<b>2205</b>
		Apt Elev <b>2205</b>	<b>2205</b>

# ILS or LOC RWY 12L

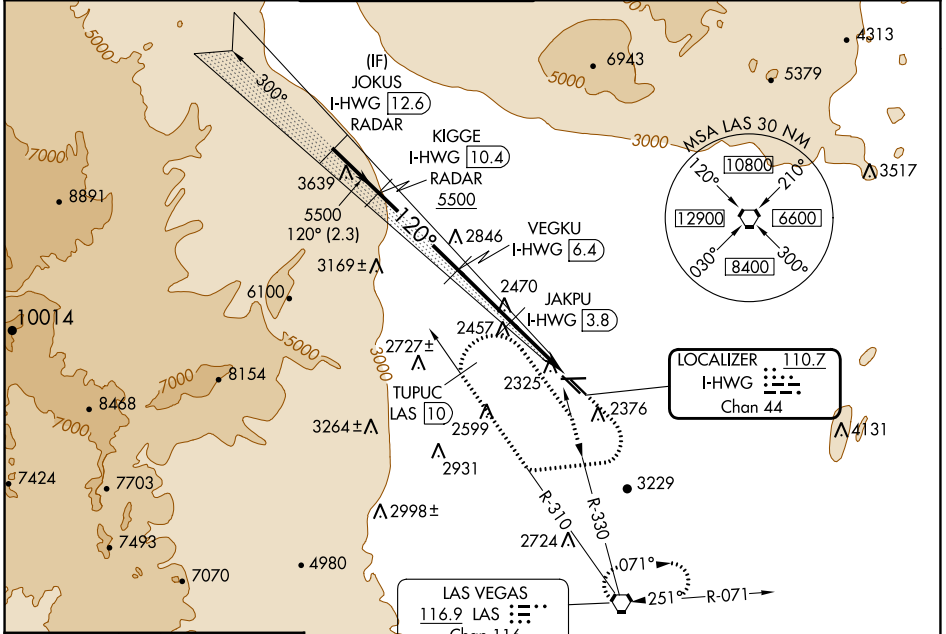
NORTH LAS VEGAS (VGT)

RADAR and DME required.

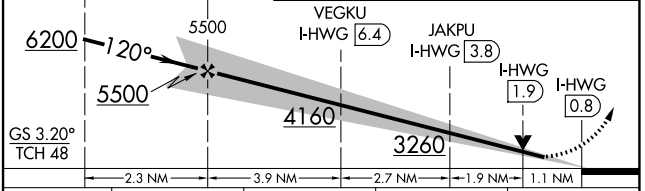
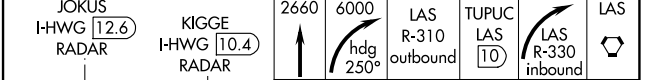
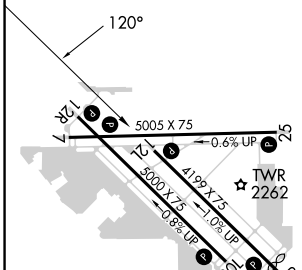
**▼** Rwy 12L helicopter visibility reduction below 3/4 SM NA.

**MISSED APPROACH:** Climb to 2660 climbing right turn heading 250° to 6000, intercept LAS VORTAC R-310 outbound to TUPUC/LAS 10 DME then right turn on LAS VORTAC R-330 inbound to LAS VORTAC and hold.

ATIS <b>118.05</b>	LAS VEGAS APP CON <b>119.4 360.85</b>	NORTH LAS VEGAS TOWER* <b>125.7 (CTAF) 360.75</b>	GND CON <b>121.7</b>	CLNC DEL <b>124.0</b>	UNICOM <b>122.95</b>
-----------------------	--	--	-------------------------	--------------------------	-------------------------



ELEV 2205	<b>D</b> TDZE 12L 2189
	TDZE 12R 2205



	A	B	C	D
S-ILS 12L	2456-7/8	267 (300-7/8)		NA
S-LOC 12L	2620-1	431 (500-1)		NA
SIDESTEP 12R	2720-1 3/8	515 (600-1 3/8)		NA
<input checked="" type="checkbox"/> CIRCLING	2720-1	515 (600-1)		NA

REIL all Rwy's **Ⓛ**  
MIRL all Rwy's **Ⓛ**

FAF to MAP 9.6 NM

Knots	60	90	120	150	180
Min:Sec	9:36	6:24	4:48	3:50	3:12

SW-4, 03 OCT 2024 to 31 OCT 2024

SW-4, 03 OCT 2024 to 31 OCT 2024