

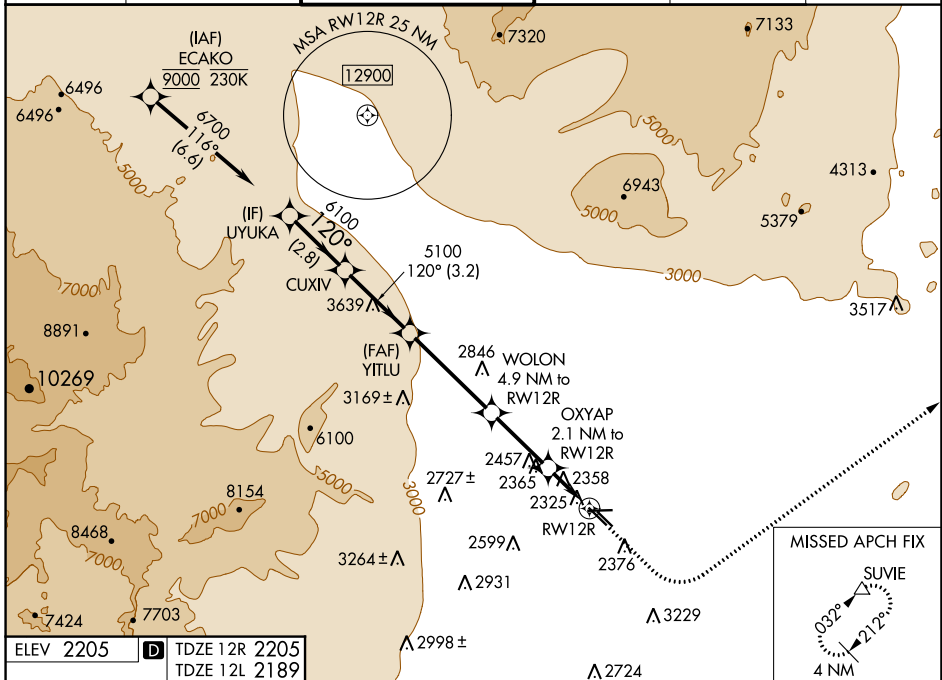
WAAS CH 69443	APP CRS 120°	Rwy Idg TDZE Apt Elev	12R 5000 2205 2205	12L 4199 2189 2205
-------------------------	------------------------	-----------------------------	--	--

RNAV (GPS) RWY 12R

NORTH LAS VEGAS (VGT)

RNP APCH - GPS.		MISSED APPROACH: Climb to 2900 then climbing left turn to 7500 direct SUVIE and hold, continue climb-in-hold to 7500.			
Rwy 12R helicopter visibility reduction below 3/4 SM NA.					

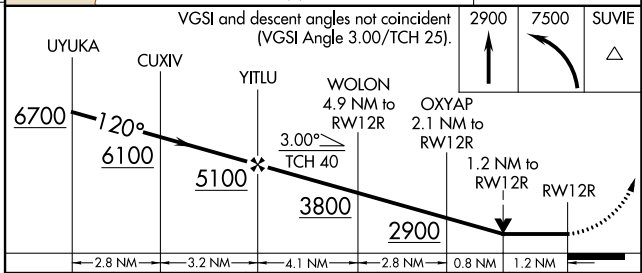
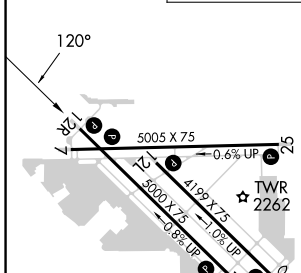
ATIS 118.05	LAS VEGAS APP CON 119.4 360.85	NORTH LAS VEGAS TOWER* 125.7 (CTAF) 360.75	GND CON 121.7	CLNC DEL 124.0	UNICOM 122.95
-----------------------	--	--	-------------------------	--------------------------	-------------------------



SW-4, 03 OCT 2024 to 31 OCT 2024

SW-4, 03 OCT 2024 to 31 OCT 2024

ELEV 2205	TDZE 12R 2205	TDZE 12L 2189
-----------	---------------	---------------



	A	B	C	D
LP MDA	2620-1	415 (500-1)	2620-1 $\frac{1}{8}$	415 (500-1 $\frac{1}{8}$)
LNAV MDA	2820-1	615 (700-1)	2820-1 $\frac{3}{4}$	615 (700-1 $\frac{3}{4}$)
SIDESTEP 12L	2820-1	631 (700-1)	2820-1 $\frac{3}{4}$ 631 (700-1 $\frac{3}{4}$)	2820-2 631 (700-2)
CIRCLING	2820-1	615 (700-1)	2840-1 $\frac{3}{4}$ 635 (700-1 $\frac{3}{4}$)	3540-3 1335 (1400-3)