

LANDR THREE ARRIVAL  
(LANDR.LANDR3) 20APR23

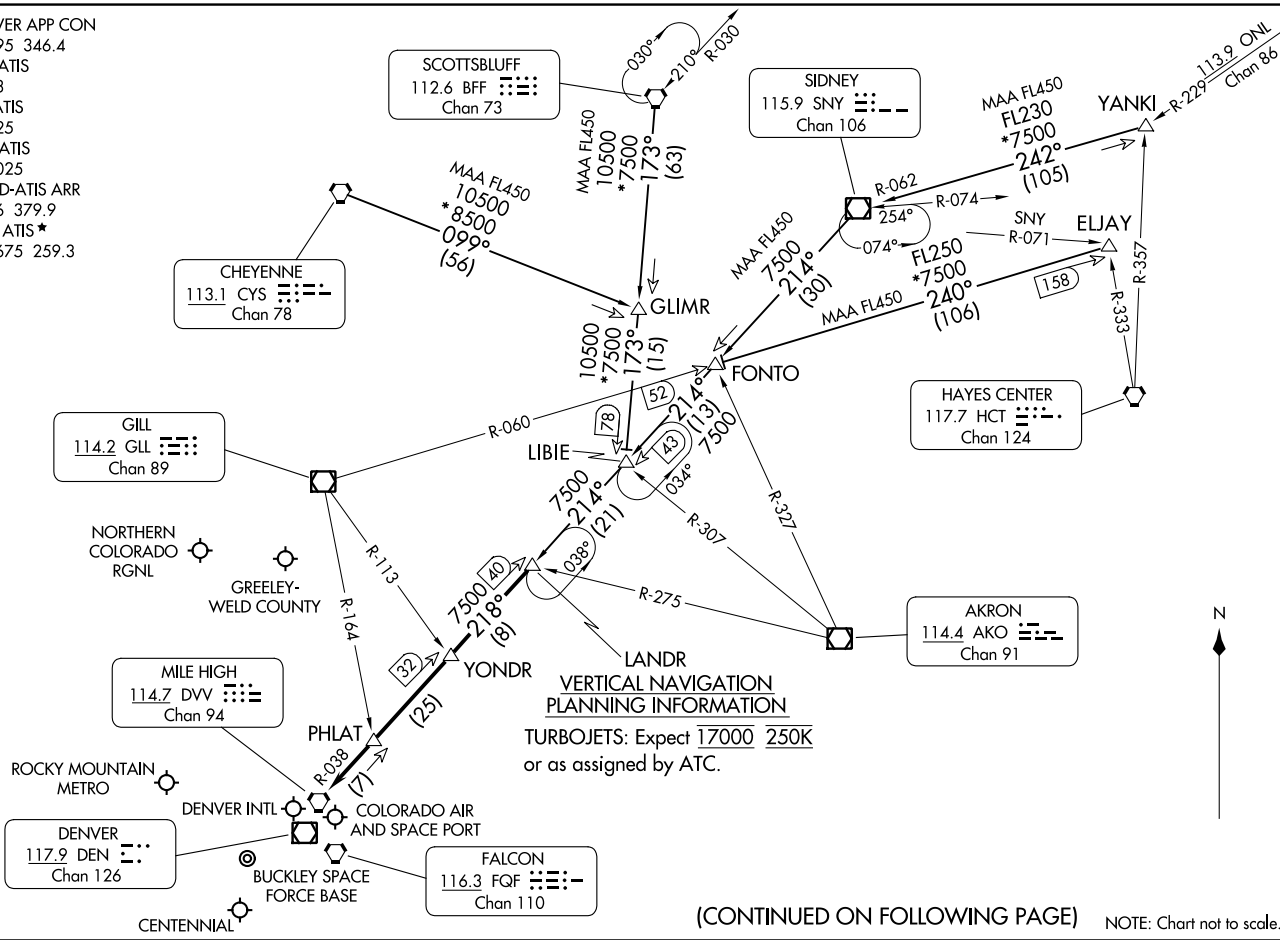
(LANDR.LANDR3) 23334  
LANDR THREE ARRIVAL

AL-9077 (FAA)

DENVER, COLORADO

DENVER APP CON  
124.95 346.4  
APA ATIS  
120.3  
BJC ATIS  
126.25  
CFO ATIS  
119.025  
DEN D-ATIS ARR  
125.6 379.9  
KBKF ATIS\*  
119.675 259.3

DENVER, COLORADO



**LANDR**  
**VERTICAL NAVIGATION**  
**PLANNING INFORMATION**  
TURBOJETs: Expect 17000 250K  
or as assigned by ATC.

(CONTINUED ON FOLLOWING PAGE)

NOTE: Chart not to scale.

ARRIVAL ROUTE DESCRIPTION

CHEYENNE TRANSITION (CYS.LANDR3): From over CYS VORTAC on CYS R-099 and BFF R-173 to LIBIE, then on SNY R-214 and DVV R-038 to LANDR. Thence. . . .

ELJAY TRANSITION (ELJAY.LANDR3): From over ELJAY on GLL R-060 to FONTO, then on SNY R-214 and DVV R-038 to LANDR. Thence. . . .

SCOTTSBLUFF TRANSITION (BFF.LANDR3): From over BFF VORTAC on BFF R-173 to LIBIE, then on SNY R-214 and DVV R-038 to LANDR. Thence. . . .

SIDNEY TRANSITION (SNY.LANDR3): From over SNY VOR/DME on SNY R-214 to FONTO, then on SNY R-214 and DVV R-038 to LANDR. Thence. . . .

YANKI TRANSITION (YANKI.LANDR3): From over YANKI on SNY R-062 to SNY VOR/DME, then on SNY R-214 and DVV R-038 to LANDR. Thence. . . .

. . . .from over LANDR on DVV R-038 to DVV VORTAC. Expect RADAR vectors to the final approach course at or before DVV VORTAC.

SW-1, 03 OCT 2024 to 31 OCT 2024

SW-1, 03 OCT 2024 to 31 OCT 2024