

# LARKS THREE ARRIVAL

AL-9077 (FAA)

DENVER, COLORADO

DENVER APP CON  
 120.35 379.3  
 APA ATIS  
 120.3  
 BJC ATIS  
 126.25  
 CFO ATIS  
 119.025  
 DEN D-ATIS ARR  
 125.6 379.9  
 FNL ATIS  
 135.075  
 KBKF ATIS\*  
 119.675 259.3

GILL  
 114.2 GLL  
 Chan 89

NORTHERN  
 COLORADO  
 RGNL

GREELEY-  
 WELD COUNTY

DENVER  
 117.9 DEN  
 Chan 126

ROCKY  
 MOUNTAIN  
 METRO

JEFFCO  
 115.4 BJC  
 Chan 101

DENVER  
 INTL  
 COLORADO  
 AIR AND  
 SPACE  
 PORT

RED TABLE  
 113.0 DBL  
 Chan 77

BUCKLEY  
 SPACE FORCE  
 BASE

CENTENNIAL  
 HUUGE

**LARKS  
 TURBOJET VERTICAL NAVIGATION  
 PLANNING INFORMATION**

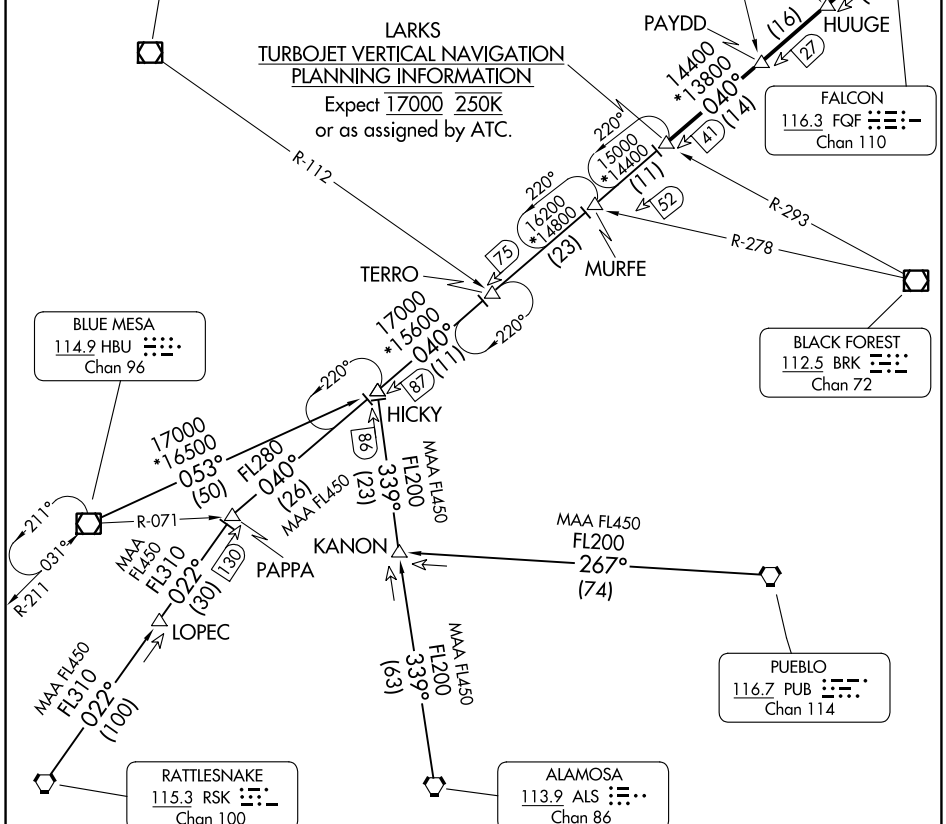
Expect 17000 250K  
 or as assigned by ATC.

PAYDD  
 14400  
 \*13800  
 040°  
 (16)

FALCON  
 116.3 FGF  
 Chan 110

SW-1, 03 OCT 2024 to 31 OCT 2024

SW-1, 03 OCT 2024 to 31 OCT 2024



NOTE: Adjacent STAR is POWDR ARRIVAL.  
 NOTE: RADAR required.  
 NOTE: Chart not to scale.

(CONTINUED ON FOLLOWING PAGE)

# LARKS THREE ARRIVAL

DENVER, COLORADO

ARRIVAL ROUTE DESCRIPTION

ALAMOSA TRANSITION (ALS.LARKS3): From over ALS VORTAC on ALS R-339 and FQF R-220 to LARKS. Thence. . . .

BLUE MESA TRANSITION (HBU.LARKS3): From over HBU VOR/DME on HBU R-053 and FQF R-220 to LARKS. Thence. . . .

LOPEC TRANSITION (LOPEC.LARKS3): From over LOPEC on RSK R-022 and FQF R-220 to LARKS. Thence. . . .

PUEBLO TRANSITION (PUB.LARKS3): From over PUB VORTAC on PUB R-267 to KANON, then on ALS R-339 and FQF R-220 to LARKS. Thence. . . .

RATTLESNAKE TRANSITION (RSK.LARKS3): From over RSK VORTAC on RSK R-022 and FQF R-220 to LARKS. Thence. . . .

. . . .from over LARKS on FQF R-220 to FALCON (FQF) VORTAC. Expect RADAR vectors to the final approach course at or before FALCON (FQF) VORTAC.

SW-1, 03 OCT 2024 to 31 OCT 2024

SW-1, 03 OCT 2024 to 31 OCT 2024