

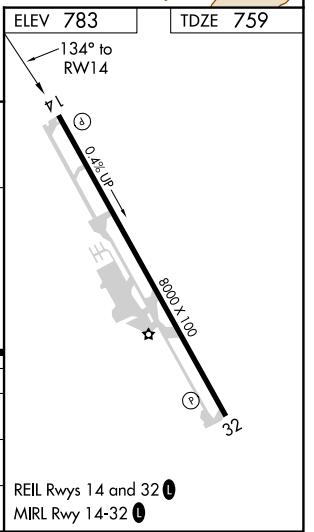
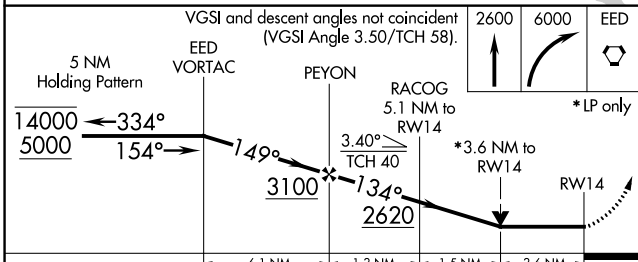
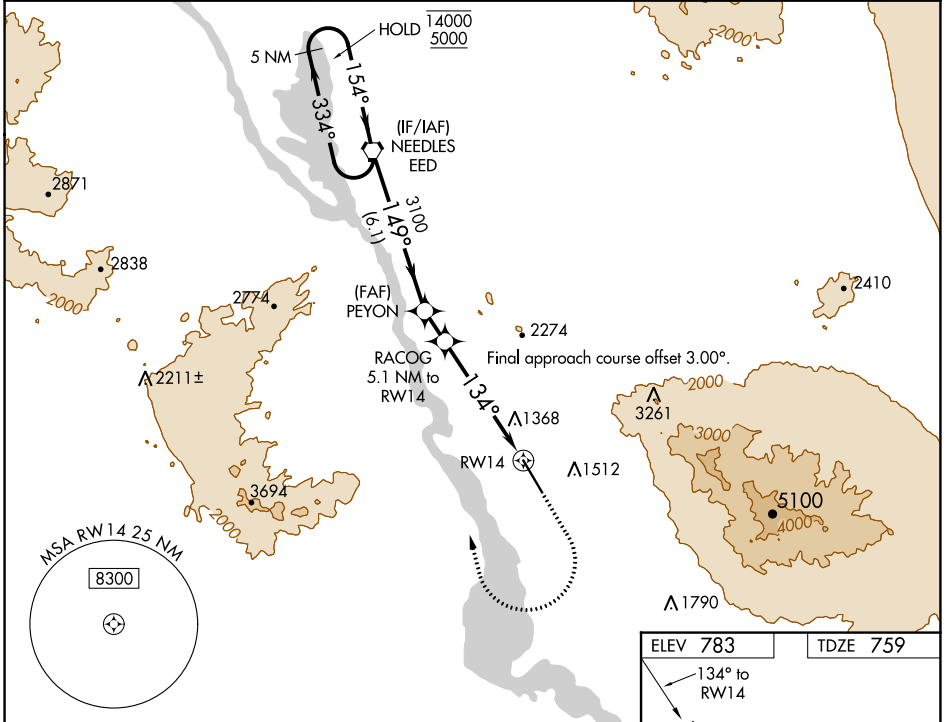
WAAS CH <b>53330</b> <b>W14A</b>	APP CRS <b>134°</b>	Rwy Idg TDZE Apt Elev	<b>8000</b> <b>759</b> <b>783</b>
--	------------------------	-----------------------------	---

# RNAV (GPS) RWY 14

LAKE HAVASU CITY (HII)

RNP APCH.	MISSED APPROACH: (Do not exceed 240K until EED VORTAC) Climb to 2600 then climbing right turn to 6000 direct EED VORTAC and hold, continue climb-in-hold to 6000.
<p>▼ Circling NA northeast of Rwy 14-32.</p> <p>▲ Rwy 14 helicopter visibility reduction below 3/4 SM NA.</p>	

AWOS-3 <b>119.025</b>	LOS ANGELES CENTER <b>134.65 360.65</b>	UNICOM <b>122.7 (CTAF) 0</b>
--------------------------	--	---------------------------------



CATEGORY	A	B	C	D
LP MDA	2140-1¼ 1381 (1400-1¼)	2140-1½ 1381 (1400-1½)	2140-3	1381 (1400-3)
LNNAV MDA	2320-1¼ 1561 (1600-1¼)	2320-1½ 1561 (1600-1½)	2320-3	1561 (1600-3)
CIRCLING	2320-1¼ 1537 (1600-1¼)	2320-1½ 1537 (1600-1½)	2320-3	1537 (1600-3)

SW-4, 03 OCT 2024 to 31 OCT 2024

SW-4, 03 OCT 2024 to 31 OCT 2024