

WAAS CH 99310 W18B	APP CRS 179°	Rwy Idg TDZE 55 Apt Elev 55
--	------------------------	---

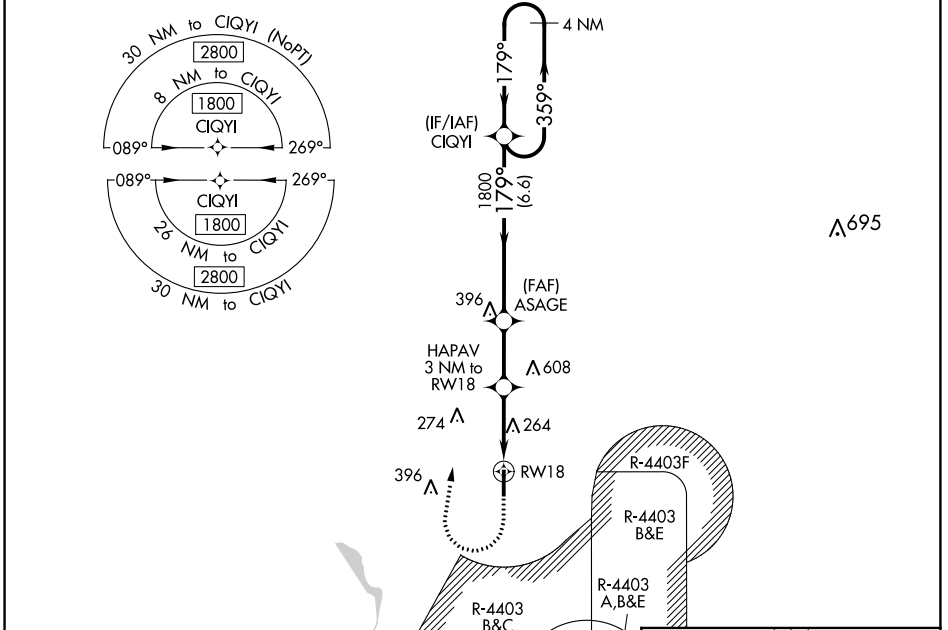
RNAV (GPS) Z RWY 18

PICAYUNE MUNI (MJJD)

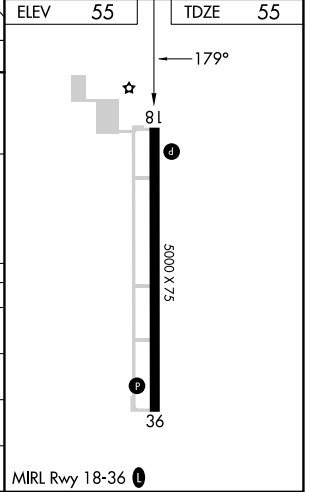
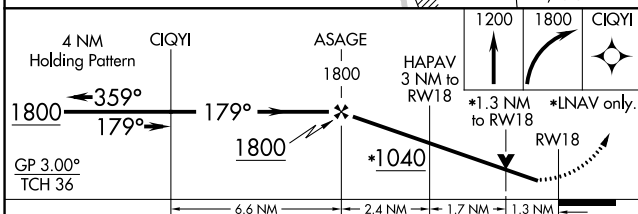
⚠ For uncompensated Baro-VNAV systems, LNAV/VNAV NA below -15°C (5°F) or above 54°C (130°F). Baro-VNAV and VDP NA when using Stennis Inlt altimeter setting. DME/DME RNP-0.3 NA. Helicopter visibility reduction below 3/4 SM NA. Procedure NA when R-4403 B, C, or E is active. When local altimeter setting not received, used Stennis Inlt altimeter setting; increase LPV DA to 377 and visibility all Cats 1/8 mile; increase LNAV/VNAV DA to 621 and visibility all Cats 1/8 mile; increase all MDA 40 feet and Circling Cat C visibility 1/4 mile.

MISSED APPROACH: Climb to 1200, then climbing right turn to 1800 direct CIQYI and hold.

AWOS-3PT 119.075	GULFPORT APP CON* 124.6 354.1	UNICOM 122.8 (CTAF) 0
----------------------------	---	---------------------------------



ELEV	55	TDZE	55
------	----	------	----



CATEGORY	A	B	C	D
LPV DA	343-1 288 (300-1)			
LNAV/VNAV DA	587-1 532 (600-1 1/8)			
LNAV MDA	520-1	465 (500-1)	520-1 3/8	465 (500-1 3/8)
C CIRCLING	520-1 465 (500-1)	580-1 525 (600-1)	700-1 3/4 645 (700-1 3/4)	960-3 905 (1000-3)

SC-4, 03 OCT 2024 to 31 OCT 2024

SC-4, 03 OCT 2024 to 31 OCT 2024