

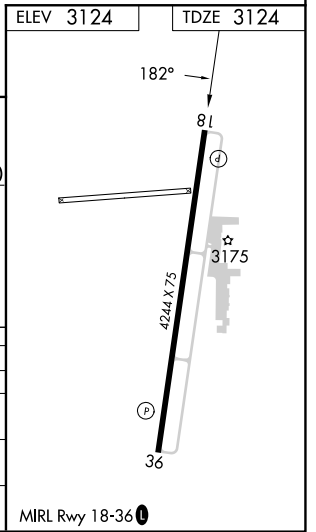
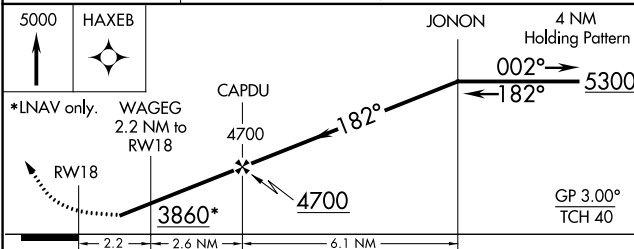
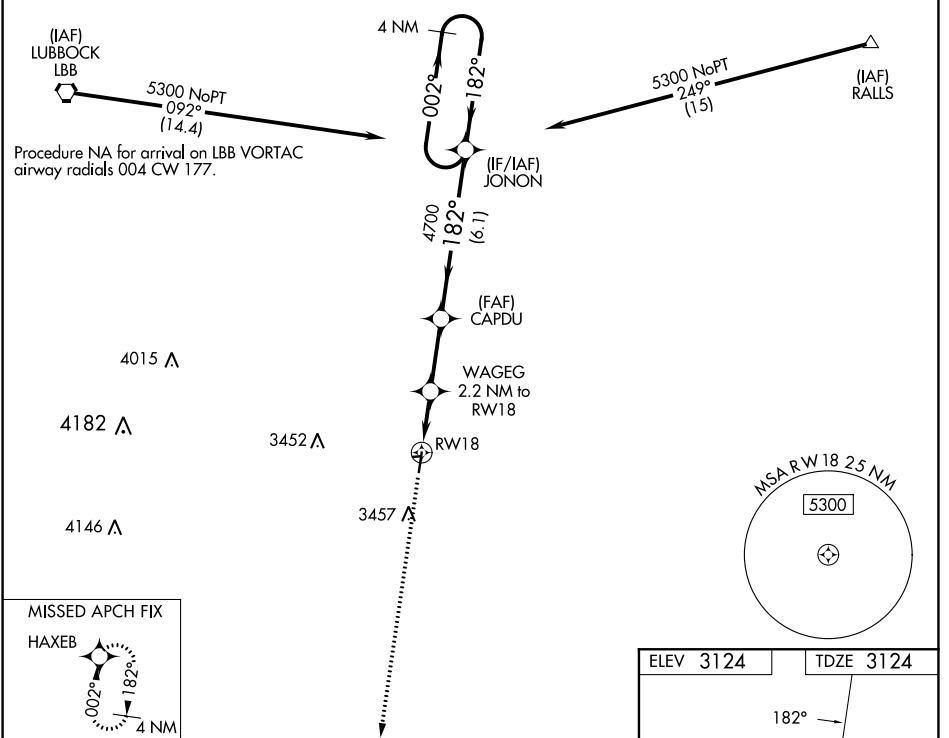
WAAS CH 42739 W18A	APP CRS 182°	Rwy Idg TDZE Apt Elev	4244 3124 3124
--	------------------------	-----------------------------	---

RNAV (GPS) RWY 18

CITY OF SLATON/LARRY T NEAL MEML (F49)

NA Baro-VNAV NA. DME/DME RNP-0.3 NA. Rwy 18 helicopter visibility reduction below 3/4 SM NA. MISSED APPROACH: Climb to 5000 direct HAXEB and hold.

LBB ASOS 125.3 270.275	LUBBOCK APP CON 119.2 351.8	UNICOM 123.0(CTAF) 0
----------------------------------	---------------------------------------	--------------------------------



CATEGORY	A	B	C	D
LPV DA		3427-1	303 (400-1)	
LNAV/VNAV DA		3427-1	303 (400-1)	
LNAV MDA		3480-1	356 (400-1)	
C CIRCLING	3680-1 556 (600-1)	3820-1 696 (700-1)	3820-2 696 (700-2)	3820-2 1/4 696 (700-2 1/4)

SC-2, 03 OCT 2024 to 31 OCT 2024

SC-2, 03 OCT 2024 to 31 OCT 2024