

LOC/DME I-EMB 109.75 Chan 34 (Y)	APP CRS 175°	Rwy ldg 7202 TDZE 1771 Apt Elev 1791
--	------------------------	---

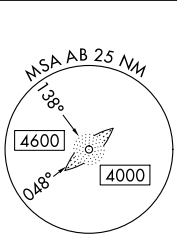
LOC RWY 17R

ABILENE RGNL (ABI)

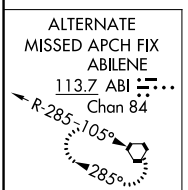
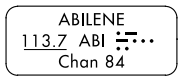
ADF required for missed approach.

MISSED APPROACH: Climb to 2800 then climbing left turn to 4000 direct TOMHI LOM and hold.

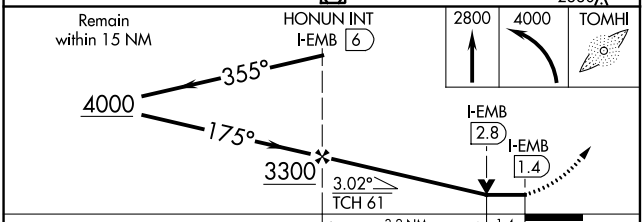
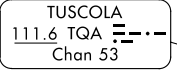
ATIS 118.25	ABILENE APP CON 125.0 338.3 (EAST) 127.2 282.3 (WEST)	ABILENE TOWER 120.1 257.8	GND CON 121.7 348.6
-----------------------	---	-------------------------------------	-------------------------------



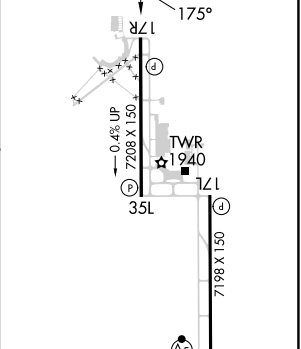
Procedure NA for arrival on ABI VORTAC airway radials 037 CW 099.



Procedure NA for arrival on TQA VOR/DME airway radial 082.



ELEV 1791	D TDZE 1771
-----------	--------------------



REIL Rwy 35L	HIRL Rwys 17L-35R and 17R-35L	FAF to MAP 4.6 NM
Category	A B C D E	Knots 60 90 120 150 180
S-LOC 17R	2280-1 509 (500-1) 2280-1 3/8 509 (500-1 3/8)	Min:Sec 4:36 3:04 2:18 1:50 1:32
CIRCLING	2300-1 509 (600-1) 2320-1 529 (600-1) 2420-1 3/4 629 (700-1 3/4) 2460-2 669 (700-2) 2620-3 829 (900-3)	

SC-2, 31 OCT 2024 to 28 NOV 2024

SC-2, 31 OCT 2024 to 28 NOV 2024