

ALBANY, GEORGIA

AL-8 (FAA)

23334

| | | |
|--|------------------------|---|
| WAAS CH 53613 W23A | APP CRS 227° | Rwy Idg 6601 TDZE 192 Apt Elev 196 |
|--|------------------------|---|

RNAV (GPS) RWY 23

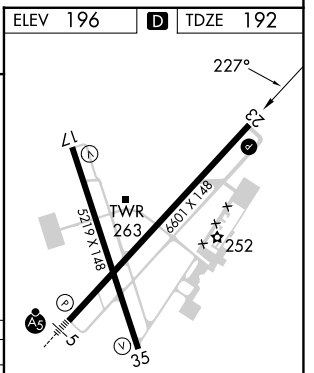
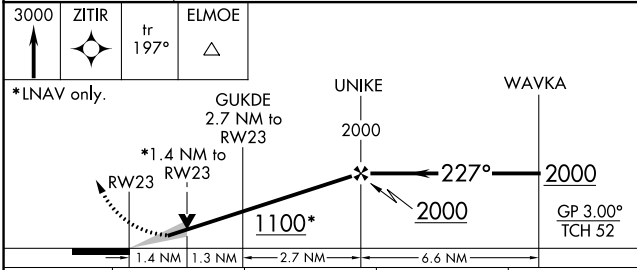
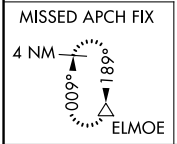
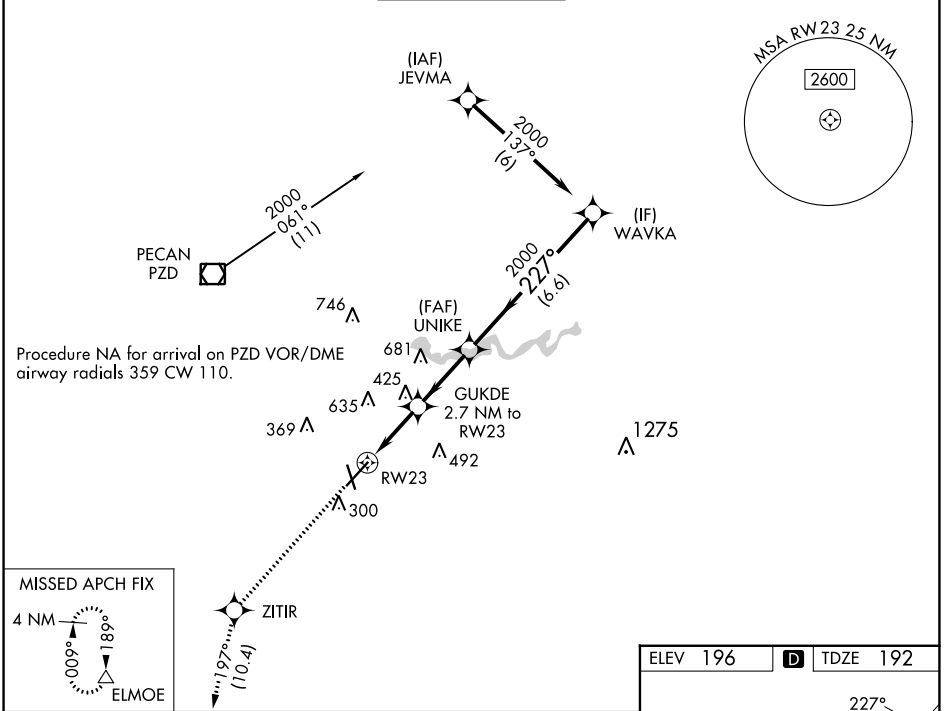
SOUTHWEST GEORGIA RGNL (ABY)

RNP APCH.

▼ For uncompensated Baro-VNAV systems, LNAV/VNAV NA
▲ below -7°C or above 54°C.

MISSED APPROACH: Climb to 3000 direct ZITIR and on track 197° to ELMOE and hold.

| | | | | |
|-----------------------|--|---|-------------------------------|-------------------------|
| ATIS 133.05 | JACKSONVILLE CENTER 125.75 363.075 | ALBANY TOWER * 120.25 (CTAF) 0336.4 | GND CON 121.9 348.6 | UNICOM 122.95 |
|-----------------------|--|---|-------------------------------|-------------------------|



| CATEGORY | A | B | C | D |
|-------------------|-------|-------------|------------------------|------------------------|
| LPV DA | | 531-1¼ | 339 (400-1¼) | |
| LNAV/VNAV DA | | 611-1½ | 419 (500-1½) | |
| LNAV MDA | 680-1 | 488 (500-1) | 680-1¼ 488 (500-1¼) | 680-1½ 488 (500-1½) |
| C CIRCLING | 680-1 | 484 (500-1) | 940-2¼ 744 (800-2¼) | 940-2½ 744 (800-2½) |

HIRL Rwy 5-23
 MIRL Rwy 17-35
 REIL Rwy 35
 REIL Rwy 17 and 23

ALBANY, GEORGIA
 Amdt 1C 26MAR20

31°32'N-84°12'W

SOUTHWEST GEORGIA RGNL (ABY)
RNAV (GPS) RWY 23

SE-4, 31 OCT 2024 to 28 NOV 2024

SE-4, 31 OCT 2024 to 28 NOV 2024