

WAAS CH 78000 W05A	APP CRS 047°	Rwy Idg 6601 TDZE 196 Apt Elev 196
---------------------------------	------------------------	---

RNAV (GPS) RWY 5

SOUTHWEST GEORGIA RGNL (A.B.Y)

RNP APCH.

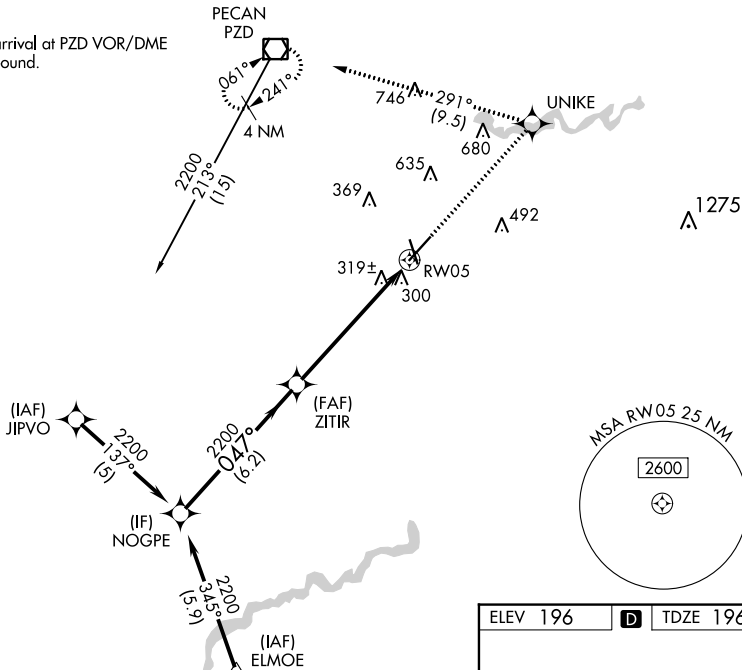
▼ For uncompensated Baro-VNAV systems, LNAV/VNAV NA below -7°C or above 54°C. For inop ALS, increase LNAV Cat D visibility to RVR 6000.
 ▲ ** RVR 1800 authorized with use of FD or AP or HUD to DA.



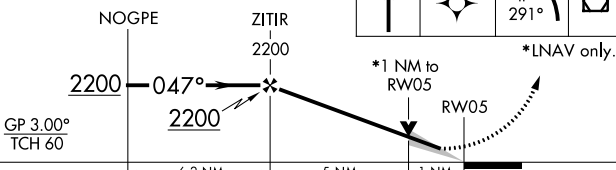
MISSED APPROACH: Climb to 2000 direct UNIKE and left turn on track 291° to PZD VOR/DME and hold.

ATIS 133.05	JACKSONVILLE CENTER 125.75 363.075	ALBANY TOWER * 120.25 (CTAF) 0336.4	GND CON 121.9 348.6	UNICOM 122.95
-----------------------	--	---	-------------------------------	-------------------------

Procedure NA for arrival at PZD VOR/DME on V35-159 northbound.



VGSI and RNAV glidepath not coincident (VGSI Angle 3.00/TCH 55).



ELEV 196	D	TDZE 196
----------	---	----------

HIRL Rwy 5-23
 MIRL Rwy 17-35
 REIL Rwy 35
 REIL Rwy 17 and 23

CATEGORY	A	B	C	D
LPV DA**		396/24	200 (200-½)	
LNAV/VNAV DA		635/50	439 (500-1)	
LNAV MDA	580/24	384 (400-½)		580/50 384 (400-1)
CIRCLING	640-1 444 (500-1)	660-1 464 (500-1)	940-2¼ 744 (800-2¼)	940-2½ 744 (800-2½)

SE-4, 31 OCT 2024 to 28 NOV 2024

SE-4, 31 OCT 2024 to 28 NOV 2024