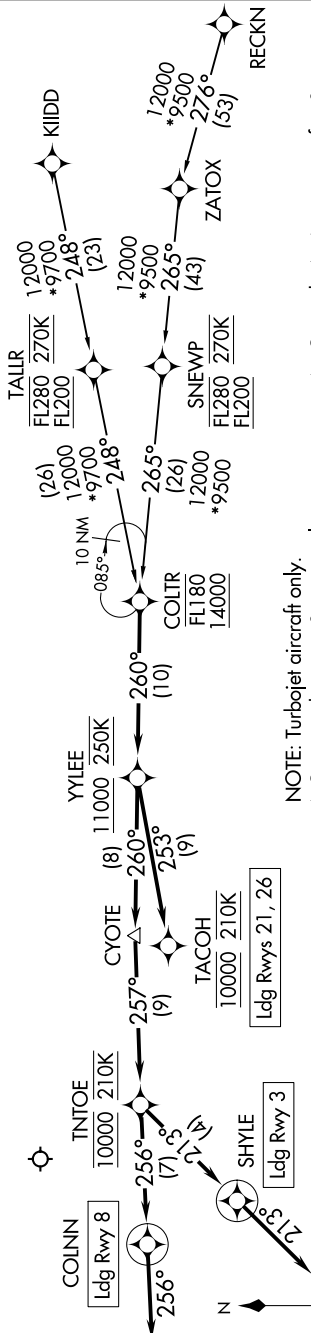


ALBUQUERQUE APP CON
123.9 354.1
D-ATIS
118.0 257.7

CAUTION: Glider activity sunrise to sunset; 30 to 50 miles east of KABQ; 17500 feet MSL and below.



NOTE: Turbopjet aircraft only.

NOTE: Landing Rwy 3, expect clearance prior to TINTOE and RADAR vectors after SHYLE.

NOTE: Landing Rwy 8, expect clearance prior to TINTOE and RADAR vectors after COLINN.

NOTE: Landing Rwy 21, 26: RNP-AR aircraft expect RNAV (RNP) approach prior to YYLEE.

Non-RNP aircraft expect RADAR vectors to final approach course after TACOH.

NOTE: Chart not to scale.

ARRIVAL ROUTE DESCRIPTION

KIIDD TRANSITION (KIIDD.COLTR4)

RECKN TRANSITION (RECKN.COLTR4)

From COLTR on track 260° to cross YYLEE at or above 11000 and at 250K.

LANDING RUNWAY 3: From YYLEE on track 260° to CYOTE, then on track 257° to cross TINTOE at 10000 and at 210K, then on track 213° to SHYLE, then on track 213°. Expect RADAR vectors to final approach course for RNP, GPS, or ILS RWY 3 approach.

LANDING RUNWAY 8: From YYLEE on track 260° to CYOTE, then on track 257° to cross TINTOE at 10000 and at 210K, then on track 256° to COLINN, then on track 256°. Expect RADAR vectors to final approach course for RNP, GPS, or ILS RWY 8 approach.

LANDING RUNWAY 21: From YYLEE on track 253° to cross TACOH at 10000 and at 210K. Expect RNP Z RWY 21 approach or RADAR vectors to final approach course.

LANDING RUNWAY 26: From YYLEE on track 253° to cross TACOH at 10000 and at 210K. Expect RNP Z RWY 26 approach or RADAR vectors to final approach course.