

MINZNO THREE DEPARTURE (RNAV)
(MNZNO3.MNZNO) 25JUN15

ALBUQUERQUE INTL SUNPORT (ABQ)
(MNZNO3.MNZNO) 25JUN15

ALBUQUERQUE INTL SUNPORT (ABQ)
(MNZNO3.MNZNO) 21336

ALBUQUERQUE INTL SUNPORT (ABQ)
(MNZNO3.MNZNO) 21336

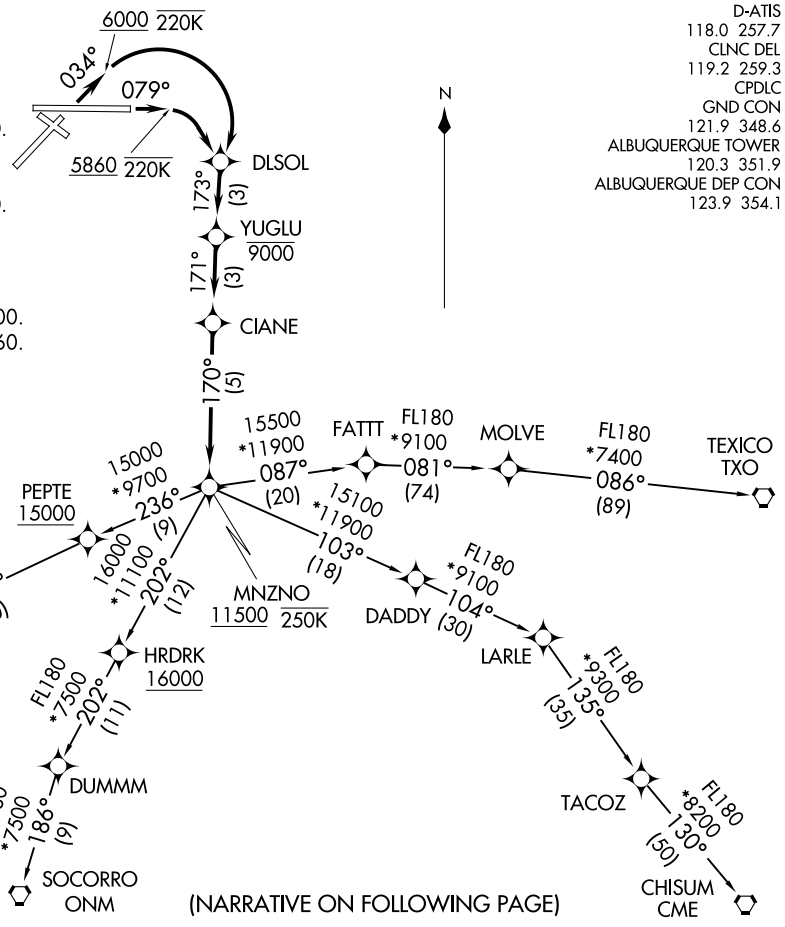
**TOP ALTITUDE:
FL200**

TAKEOFF MINIMUMS

- Rwy 3: Standard with minimum climb of 500' per NM to 9000. Minimum obstacle climb gradient after YUGLU is 420' per NM to 11900.
- Rwy 8: Standard with minimum climb of 515' per NM to 9000. Minimum obstacle climb gradient after YUGLU is 420' per NM to 11900.

- NOTE: Takeoff Rwy 3, do not exceed 220K until passing 6000.
- NOTE: Takeoff Rwy 8, do not exceed 220K until passing 5860.
- NOTE: Do not exceed 250K until passing MNZNO.
- NOTE: DME/DME/IRU or GPS required.
- NOTE: For turbojet aircraft only.
- NOTE: RNAV 1.
- NOTE: RADAR required.
- NOTE: If unable to accept climb gradient, advise ATC on initial contact.
- NOTE: For non-GPS equipped aircraft ONM DME must be operational.

NOTE: Chart not to scale.



D-ATIS	118.0	257.7
CLNC DEL	119.2	259.3
CPDLC		
GND CON	121.9	348.6
ALBUQUERQUE TOWER	120.3	351.9
ALBUQUERQUE DEP CON	123.9	354.1



DEPARTURE ROUTE DESCRIPTION

TAKEOFF RUNWAY 3: Climb heading 034° to 6000, then right turn direct DLSOL, then on track 173° to YUGLU, cross YUGLU at or below 9000, then on depicted route to MNZNO, cross MNZNO at or above 11500. Thence

TAKEOFF RUNWAY 8: Climb heading 079° to 5860, then right turn direct DLSOL, then on track 173° to YUGLU, cross YUGLU at or below 9000, then on depicted route to MNZNO, cross MNZNO at or above 11500. Thence

. . . . (transition). Maintain FL200, expect filed altitude ten minutes after departure.

CHISUM TRANSITION (MNZNO3.CME)

LAMSE TRANSITION (MNZNO3.LAMSE)

MOLVE TRANSITION (MNZNO3.MOLVE)

SOCORRO TRANSITION (MNZNO3.ONM)

ST JOHNS TRANSITION (MNZNO3.SJN)

TEXICO TRANSITION (MNZNO3.TXO)

SW-1, 31 OCT 2024 to 28 NOV 2024

SW-1, 31 OCT 2024 to 28 NOV 2024