

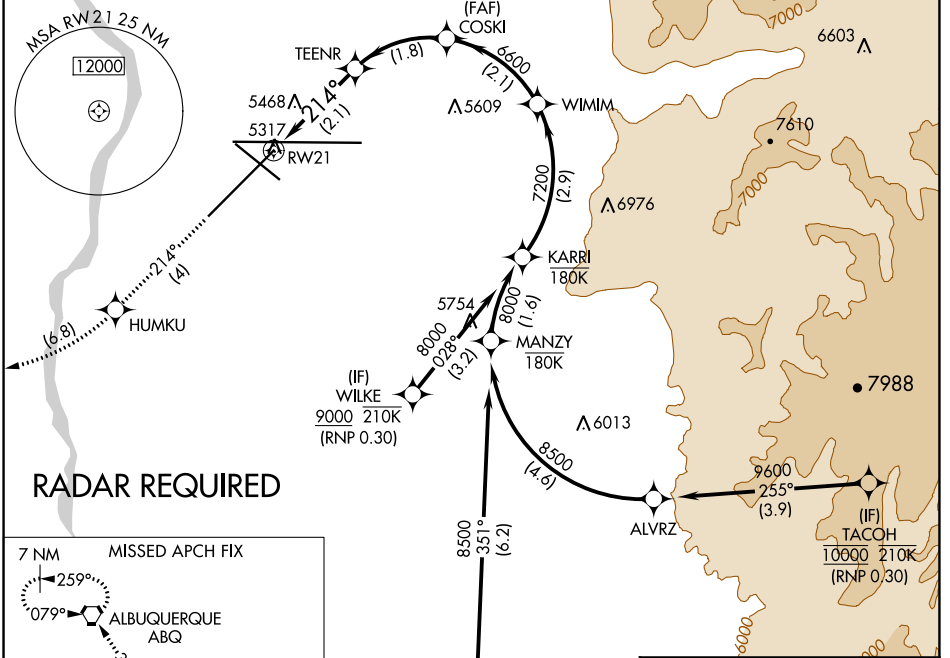
APP CRS	Rwy Idg	<b>10000</b>
<b>214°</b>	TDZE	<b>5316</b>
	Apt Elev	<b>5355</b>

# RNAV (RNP) Z RWY 21

ALBUQUERQUE INTL SUNPORT (ABQ)

ASR	For uncompensated Baro-VNAV systems, procedure NA below -12°C (11°F) or above 47°C (116°F). RF required. GPS required.	MISSED APPROACH: Climb to 8000 on track 214° to HUMKU, right turn to WAPMA, then on track 315° to ABQ VORTAC and hold.

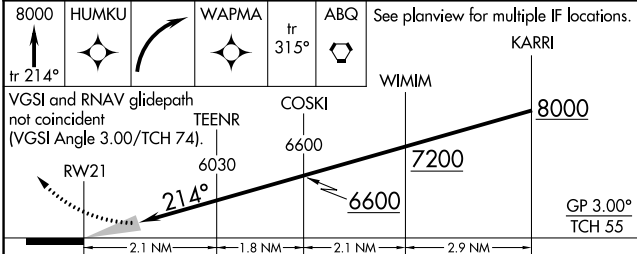
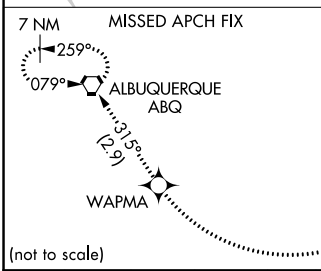
D-ATIS	ALBUQUERQUE APP CON	ALBUQUERQUE TOWER	GND CON	CLNC DEL	CPDLC
<b>118.0 257.7</b>	<b>123.9 354.1</b>	<b>120.3 351.9</b>	<b>121.9 348.6</b>	<b>119.2 259.3</b>	



SW-1, 31 OCT 2024 to 28 NOV 2024

SW-1, 31 OCT 2024 to 28 NOV 2024

**RADAR REQUIRED**



CATEGORY	A	B	C	D
RNP 0.30 DA		5755-1½	439 (400-1½)	

**AUTHORIZATION REQUIRED**

ELEV 5355	<b>D</b> TDZE 5316
-----------	--------------------

MRL Rwy 12-30  
TDZ/CL Rwy 3 and 8  
HIRL Rwy 3-21 and 8-26  
REIL Rwy 21, 26, and 30