

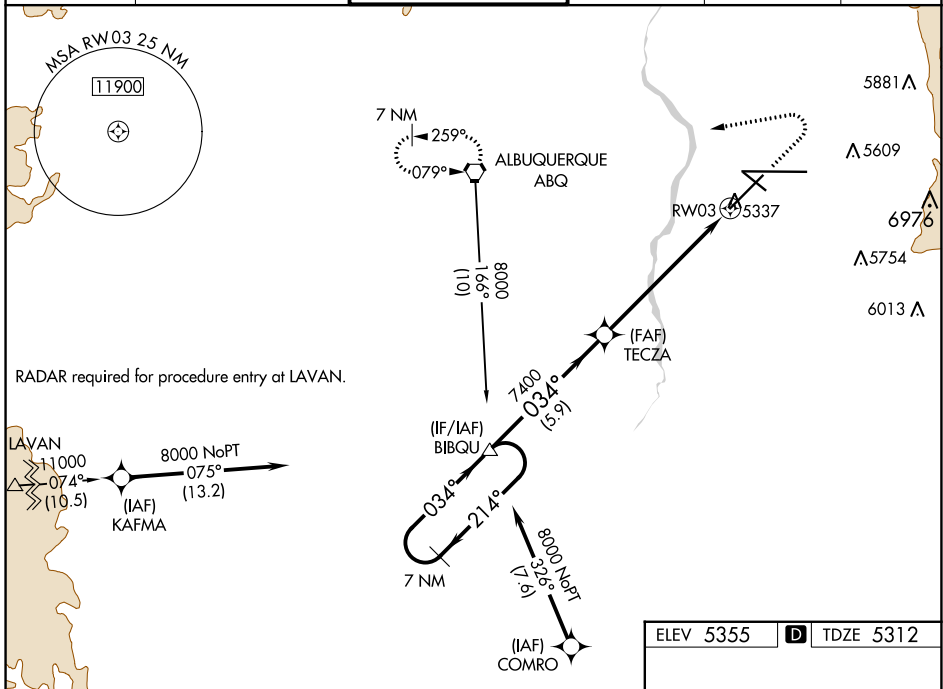
WAAS CH 78137 W03A	APP CRS 034°	Rwy Idg TDZE 5312 Apt Elev 5355
--	------------------------	---

RNAV (GPS) Y RWY 3

ALBUQUERQUE INTL SUNPORT (ABQ)

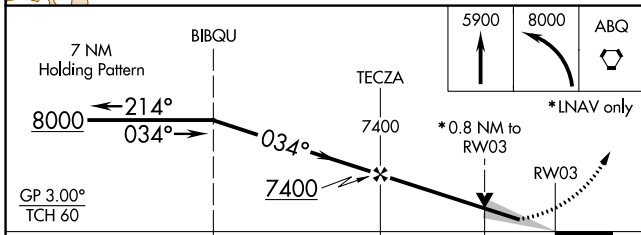
 DME/DME RNP-0.3 NA. For uncompensated Baro-VNAV systems, LNAV/VNAV NA below -13°C (9°F) or above 45°C (114°F).	 MALSR	MISSED APPROACH: Climb to 5900 then climbing left turn to 8000 direct ABQ VORTAC and hold, continue climb-in-hold to 8000.
		MISSED APPROACH: Climb to 5900 then climbing left turn to 8000 direct ABQ VORTAC and hold, continue climb-in-hold to 8000.

D-ATIS 118.0 257.7	ALBUQUERQUE APP CON 123.9 354.1	ALBUQUERQUE TOWER 120.3 351.9	GND CON 121.9 348.6	CLNC DEL 119.2 259.3	CPDLC
------------------------------	---	---	-------------------------------	--------------------------------	-------

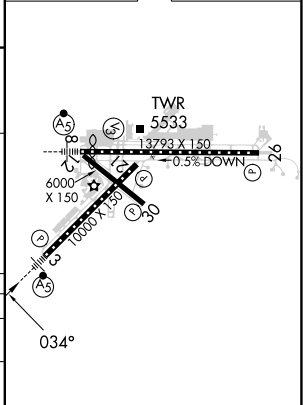


SW-1, 31 OCT 2024 to 28 NOV 2024

SW-1, 31 OCT 2024 to 28 NOV 2024



ELEV 5355	D	TDZE 5312
-----------	----------	-----------



CATEGORY	A	B	C	D
LPV DA		5512/24	200 (200-½)	
LNAV/VNAV DA		5562/24	250 (300-½)	
LNAV MDA		5620/24	308 (300-½)	
CIRCLING	5840-1 485 (500-1)	5920-1 565 (600-1)	5940-1½ 585 (600-½)	6460-3 1105 (1200-3)

MIRL Rwy 12-30
TDZ/CL Rwy 3 and 8
HIRL Rwy 3-21 and 8-26
REIL Rwy 21, 26, and 30