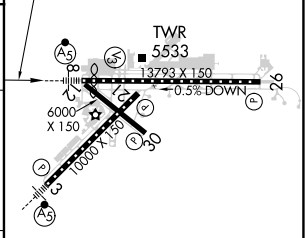
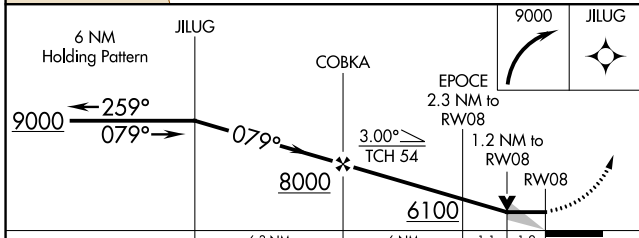
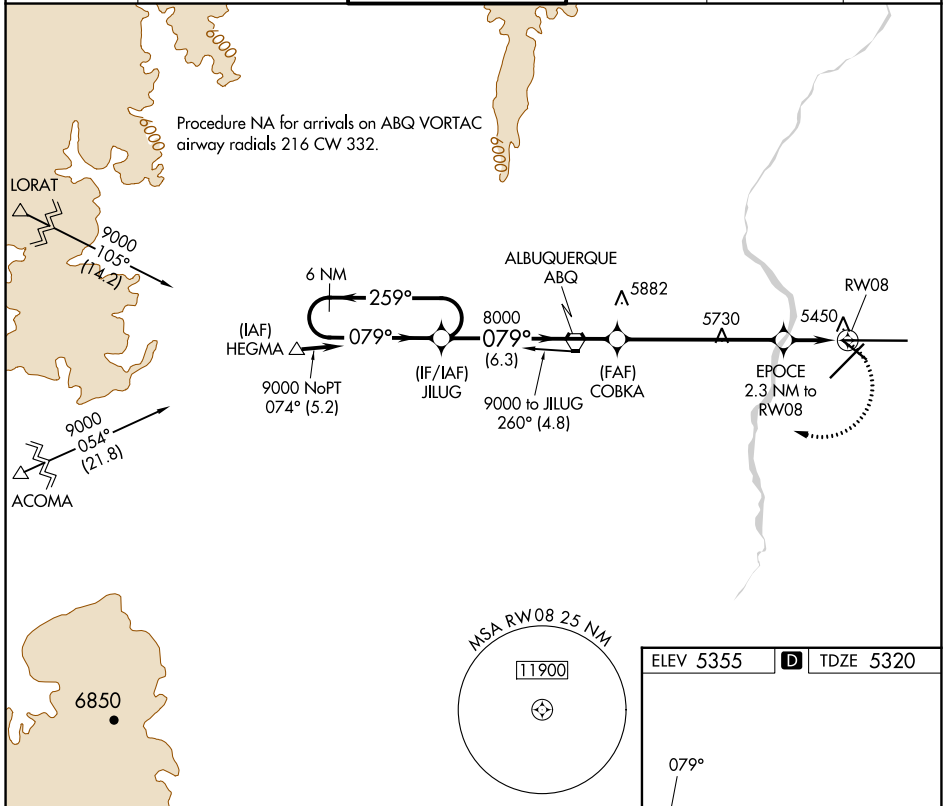


APP CRS <b>079°</b>	Rwy Idg <b>12793</b>
	TDZE <b>5320</b>
	Apt Elev <b>5355</b>

# RNAV (GPS) Y RWY 8

ALBUQUERQUE INTL SUNPORT (ABQ)

DME/DME RNP-0.3 NA.		MALSR	MISSED APPROACH: Climbing right turn to 9000 direct JILUG and hold.		
D-ATIS <b>118.0 257.7</b>	ALBUQUERQUE APP CON <b>123.9 354.1</b>	ALBUQUERQUE TOWER <b>120.3 351.9</b>	GND CON <b>121.9 348.6</b>	CLNC DEL <b>119.2 259.3</b>	CPDLC



CATEGORY	A	B	C	D
LNVA MDA	5740/24	420 (400-½)	5740/40	420 (400-¾)
CIRCLING	5840-1 485 (500-1)	5920-1 565 (600-1)	5940-1½ 585 (600-1½)	6460-3 1105 (1200-3)

MIRL Rwy 12-30  
 TDZ/CL Rwy 3 and 8  
 HIRL Rwy 3-21 and 8-26  
 REIL Rwy 21, 26, and 30

SW-1, 31 OCT 2024 to 28 NOV 2024

SW-1, 31 OCT 2024 to 28 NOV 2024