

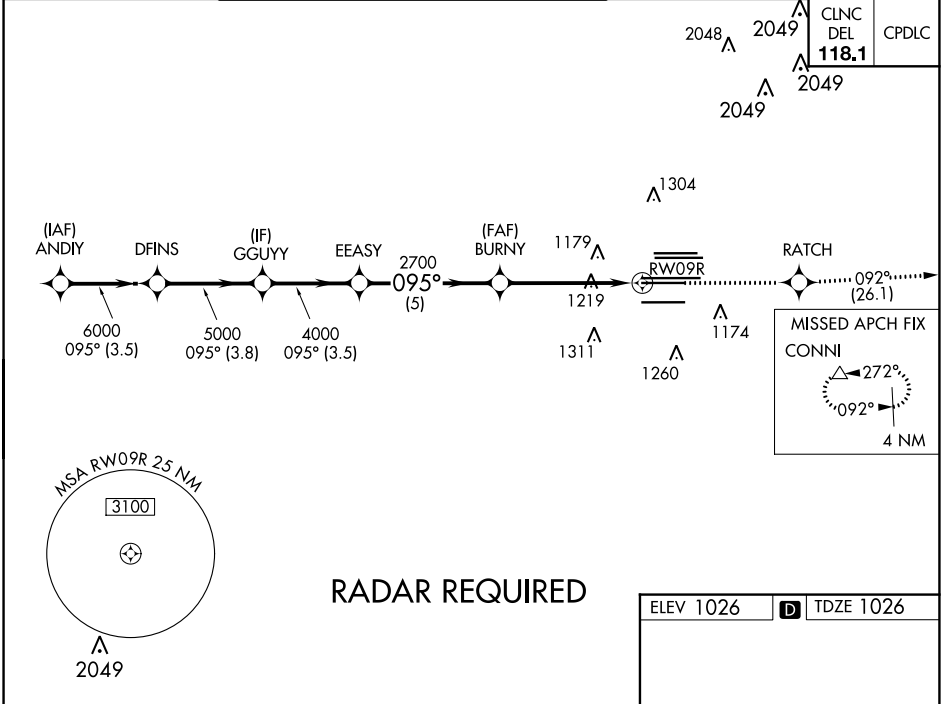
WAAS CH 97400 W09B	APP CRS 095°	Rwy Idg TDZE 1026 Apt Elev 1026	9000
--	------------------------	---	-------------

RNAV (GPS) RWY 9R
HARTSFIELD/JACKSON ATLANTA INTL (ATL)

For uncompensated Baro-VNAV systems, LNAV/VNAV NA below -7°C (20°F) or above 54°C (130°F). DME/DME RNP-0.3 NA. Simultaneous approach authorized with Rwy 8L or 8R. LNAV procedure NA during simultaneous operations. Use of FD or AP providing RNAV track guidance required during simultaneous operations.

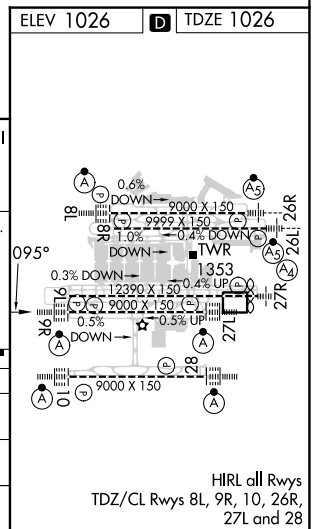
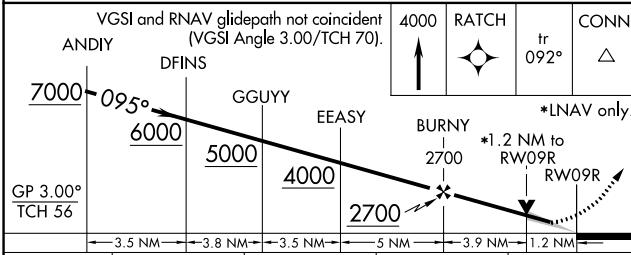
ALSF-2
MISSED APPROACH: Climb to 4000 direct RATCH and on track 092° to CONNI and hold.

D-ATIS ARR 119.65	ATLANTA APP CON	ATLANTA TOWER					ALL RWYS	GND CON	ALL RWYS	
DEP 125.55	127.9 379.9	8L-26R	8R-26L	9L-27R	9R-27L	10-28	(8L-26R,8R-26L)	(9L-27R,9R-27L)	10-28	
		119.1	125.325	123.85	119.3	119.5	121.9	121.75	121.65	254.4



SE-4, 31 OCT 2024 to 28 NOV 2024

SE-4, 31 OCT 2024 to 28 NOV 2024



CATEGORY	A	B	C	D
LPV DA		1226/18	200 (200-½)	
LNAV/VNAV DA		1403/40	377 (500-¾)	
LNAV MDA	1480/24	454 (500-½)	1480/45	454 (500-⅞)