

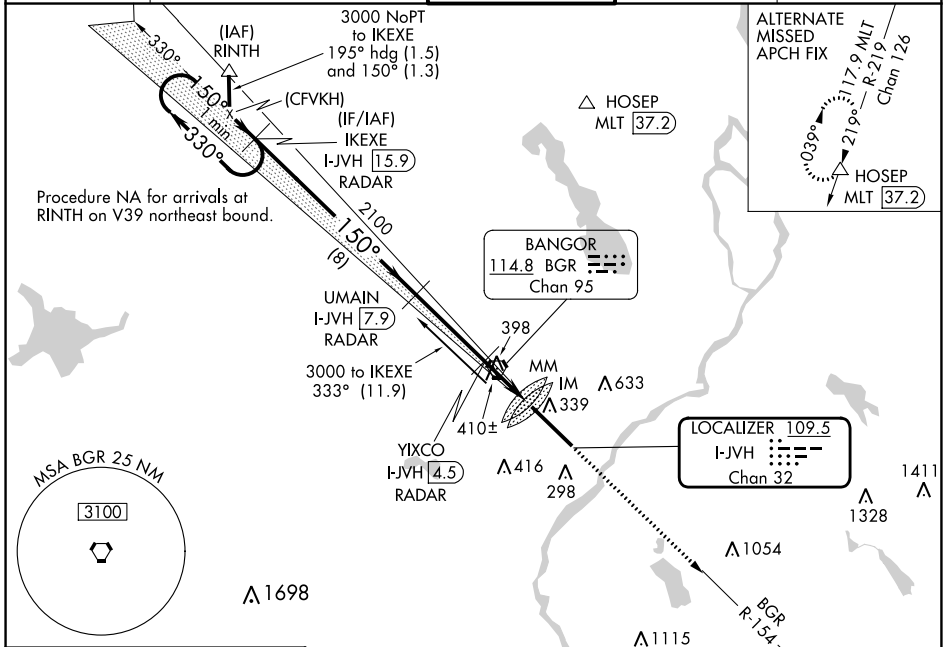
LOC/DME I-JVH 109.5 Chan 32	APP CRS 150°	Rwy Idg 11440 TDZE 192 Apt Elev 192
---	------------------------	--

ILS Y or LOC Y RWY 15

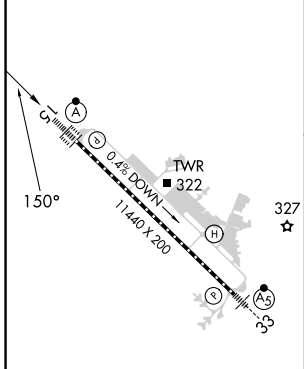
BANGOR INTL (BGR)

	Circling NA NE of Rwy 15-33. DME or RADAR required. For inoperative ALS, increase S-ILS 15 Cat E visibility to RVR 4000, and S-LOC 15 Cat C/D/E visibility to 1/2 SM.	ALSF-2 	MISSED APPROACH: Climb to 3000 on heading 150° and BGR VORTAC R-154 to ELSUH/BGR 18.3 DME/RADAR and hold.
		(A)	

ATIS 127.75	BANGOR APP CON 118.925 239.3	BANGOR TOWER 120.7 233.7	GND CON 121.9 348.6	CLNC DEL 135.9 348.6
-----------------------	--	------------------------------------	-------------------------------	--------------------------------



ELEV 192	D	TDZE 192
----------	----------	----------



DME or RADAR REQUIRED

One Minute Holding Pattern	IKEXE I-JVH [15.9] RADAR	UMAIN I-JVH [7.9] RADAR	YIXCO I-JVH [4.5] RADAR	MM	IM	I-JVH [3.3]	I-JVH [2.1]	3000	hdg 150°	BGR R-154	ELSUH BGR [18.3] RADAR
3000 ← 330° → 150° → 150° → 2100 → *1000 → *LOC only.											
TDZ/CL Rwy 15	TDZ/CL Rwy 15 HIRL Rwy 15-33										
FAF to MAP 5.8 NM	FAF to MAP 5.8 NM										
Knots	60	90	120	150	180						
Min:Sec	5:48	3:52	2:54	2:19	1:56						
<input checked="" type="checkbox"/> CIRCLING	CATEGORY A B C D E S-ILS 15 392/18 200 (200-1/2) S-LOC 15 660/24 468 (500-1/2) 660/50 468 (500-1) 660-1 720-1 740-1 820-2 880-2 1/2 468 (500-1) 528 (600-1) 548 (600-1 1/2) 628 (700-2) 688 (700-2 1/2)										

NE-1, 31 OCT 2024 to 28 NOV 2024

NE-1, 31 OCT 2024 to 28 NOV 2024