

WAAS CH 82307 W15A	APP CRS 150°	Rwy Idg 11440 TDZE 192 Apt Elev 192
--	------------------------	--

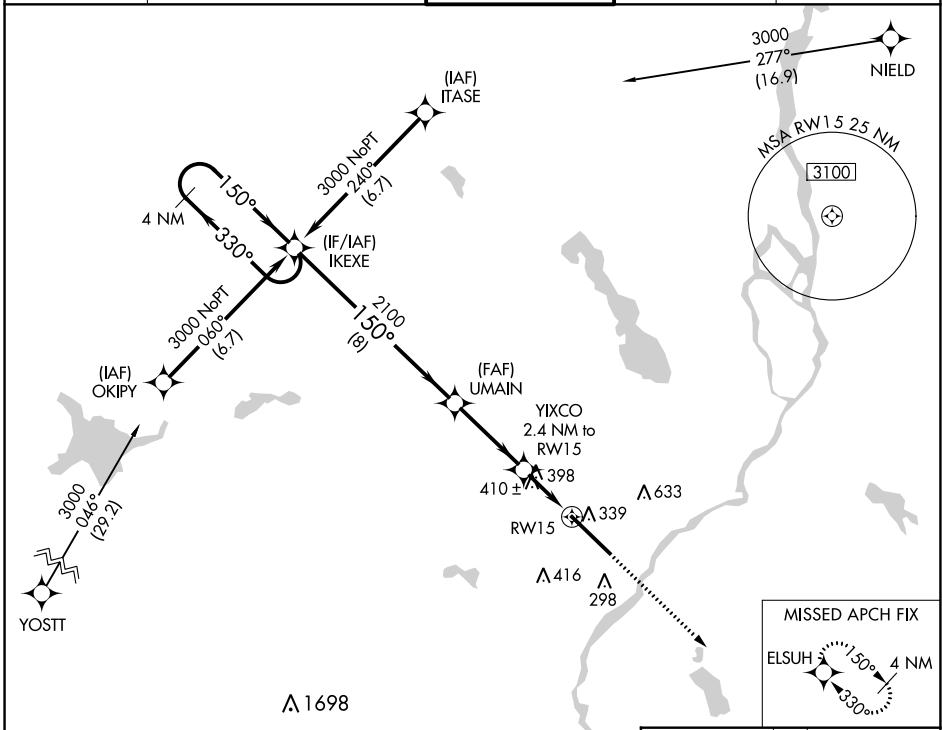
RNAV (GPS) RWY 15

BANGOR INTL (BGR)

ASR For uncompensated Baro-VNAV systems, LNAV/VNAV NA below -19°C (-2°F) or above 54°C (130°F). DME/DME RNP-0.3 NA. For inoperative ALS, increase LPV Cat E visibility to RVR 4000, LNAV/VNAV all Cats visibility to RVR 6000, and LNAV Cats C/D/E visibility to 1½ SM. Circling NA NE of Rwy 15-33.

ALSF-2 MISSED APPROACH: Climb to 3000 direct ELSUH and hold.

ATIS 127.75	BANGOR APP CON 118.925 239.3	BANGOR TOWER 120.7 233.7	GND CON 121.9 348.6	CLNC DEL 135.9 348.6
-----------------------	--	------------------------------------	-------------------------------	--------------------------------



NE-1, 31 OCT 2024 to 28 NOV 2024

NE-1, 31 OCT 2024 to 28 NOV 2024

VGSI and RNAV glidepath not coincident (VGSI Angle 3.00/TCH 55).

4 NM Holding Pattern	IKEXE	UMAIN	YIXCO	ELSUH
3000	2100	2100	1000*	3000
GP 3.00° TCH 50	8 NM	3.4 NM	1.1 NM	1.3 NM
330°	150°	150°	150°	150°
150°	150°	150°	150°	150°
392/24	200 (200-½)	349 (400-¾)	688 (700-2½)	688 (700-2½)
660/24	468 (500-½)	660/50	468 (500-1)	660/50
660-1	720-1	740-1½	820-2	880-2½
468 (500-1)	528 (600-1)	548 (600-1½)	628 (700-2)	688 (700-2½)

* LNAV only.

