

APP CRS	Rwy Idg	6700
344°	TDZE	171
	Apt Elev	171

RNAV (RNP) Z RWY 34

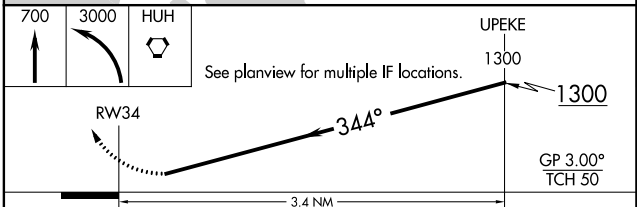
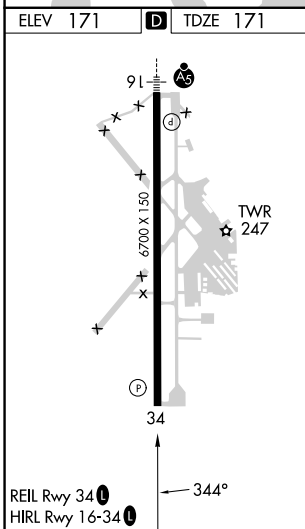
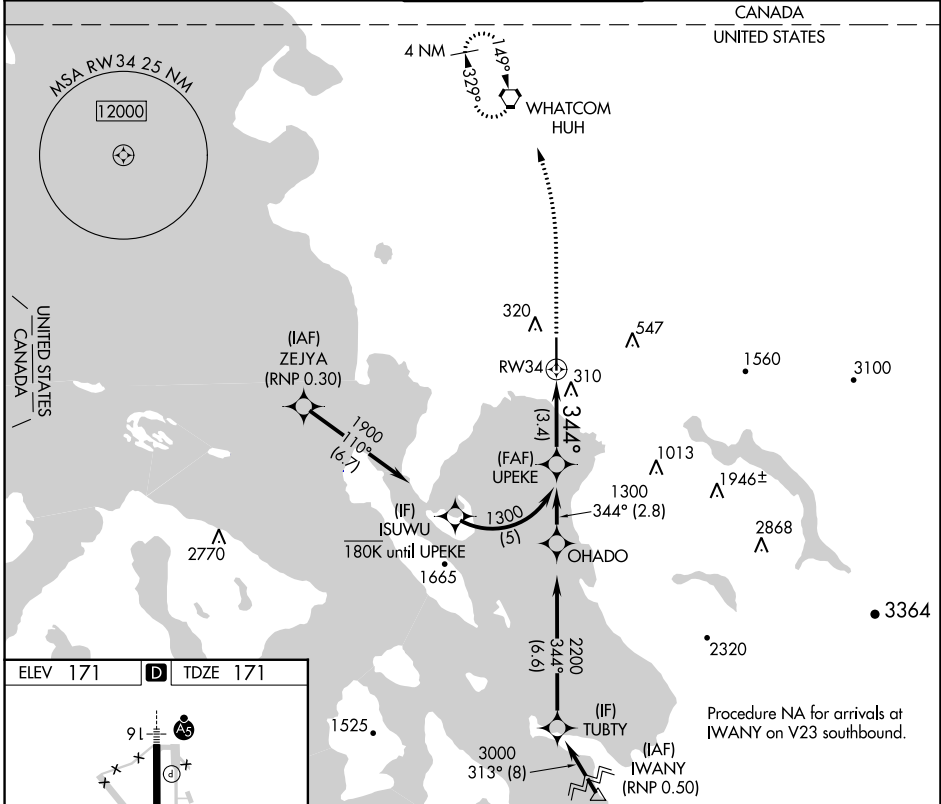
BELLINGHAM INTL (BLI)

RNP AR APCH-GPS.

⚠ For uncompensated Baro-VNAV systems, procedure NA below -7°C or above 54°C.

MISSED APPROACH: Climb to 700 then climbing left turn to 3000 direct WHATCOM VORTAC and hold, continue climb-in-hold to 3000.

ATIS	VICTORIA TERMINAL APP CON	BELLINGHAM TOWER ★	GND CON	UNICOM
134.45	132.7 290.8	124.9 (CTAF) 0 379.3	127.4 379.3	122.95



CATEGORY	A	B	C	D
RNP 0.11 DA		463-7/8	292 (300-7/8)	
RNP 0.30 DA		578-1 3/8	407 (500-1 3/8)	

AUTHORIZATION REQUIRED

NW-1, 31 OCT 2024 to 28 NOV 2024

NW-1, 31 OCT 2024 to 28 NOV 2024