

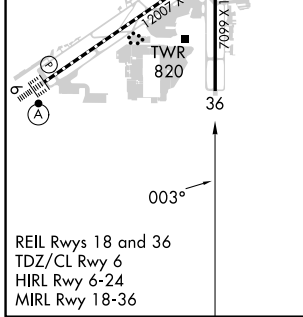
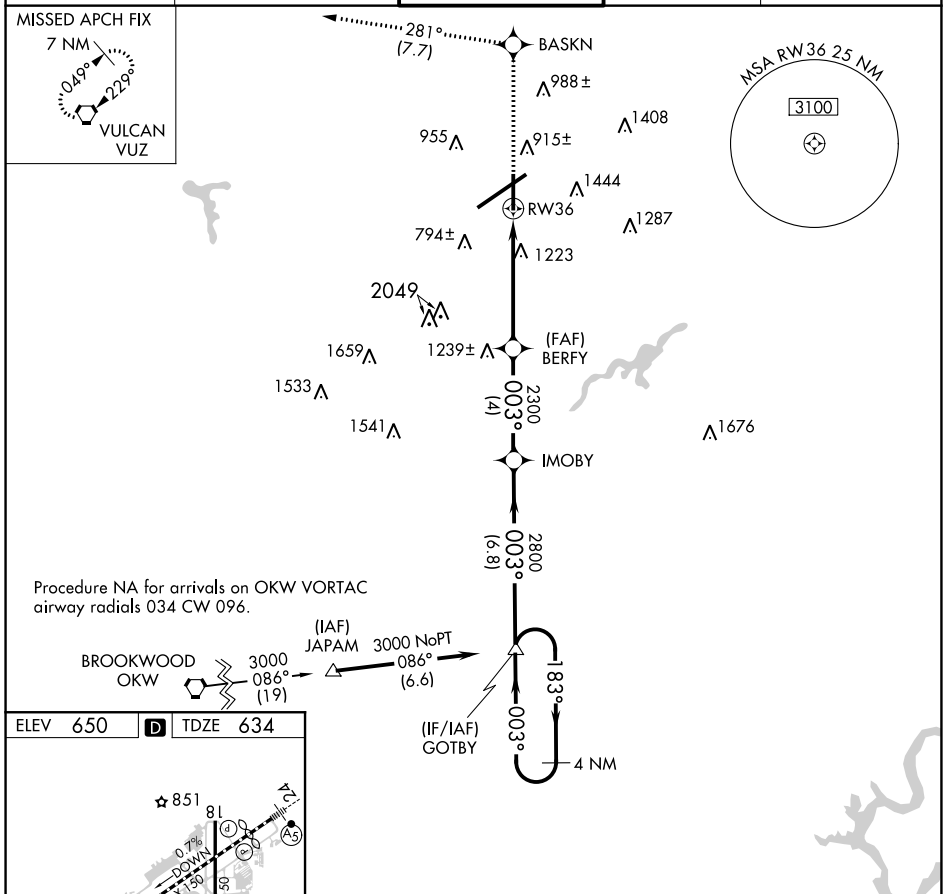
APP CRS 003°	Rwy ldg TDZE 634	7099
	Apt Elev 650	

RNAV (GPS) RWY 36

BIRMINGHAM-SHUTTLESWORTH INTL (BHM)

▼ DME/DME RNP-0.3 NA. Rwy 36 helicopter visibility reduction below 1 SM NA. Procedure NA at night.	▲ MISSED APPROACH: Climb to 3000 direct BASKN and on track 281° to VUZ VORTAC and hold.
---	--

ATIS 119.4 270.1	BIRMINGHAM APP CON 123.8 256.8	BIRMINGHAM TOWER 119.9 317.725	GND CON 121.7 348.6	CLNC DEL 125.675 305.2
----------------------------	--	--	-------------------------------	----------------------------------



3000	BASKN	VUZ	Visual Segment - Obstacles.		4 NM
↑	tr 281°	tr 281°	IMOBY	GOTBY	Holding Pattern
	BERFY	BERFY	IMOBY	GOTBY	
	RW36	2300	2800	183°	3000
				← 003°	
CATEGORY	A	B	C	D	
LNAV MDA	1480-1 847 (900-1)	1480-1¼ 847 (900-1¼)	1480-2½	847 (900-2½)	

RNAV (GPS) RWY 36

SE-4, 31 OCT 2024 to 28 NOV 2024

SE-4, 31 OCT 2024 to 28 NOV 2024