

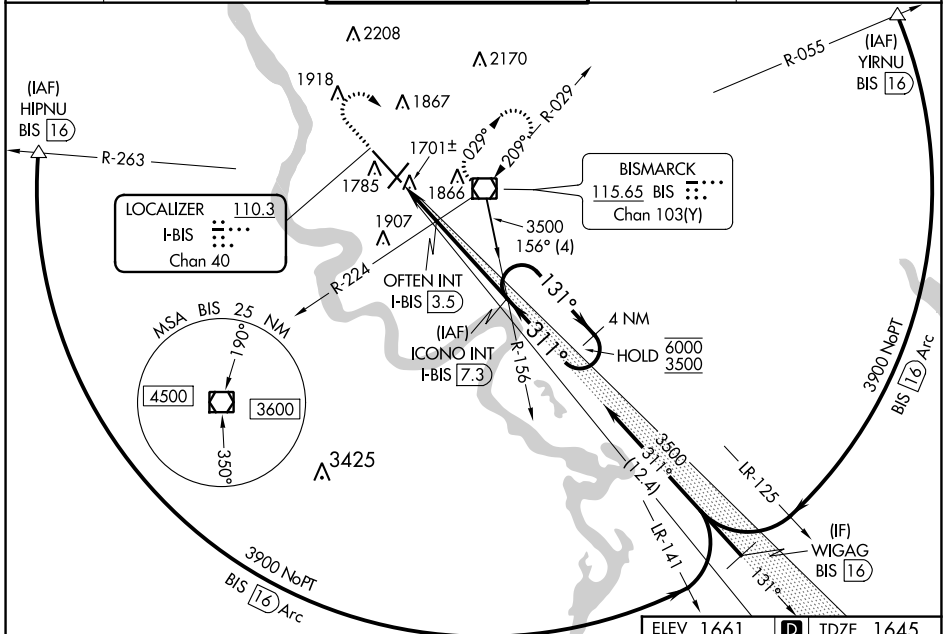
LOC/DME I-BIS 110.3 Chan 40	APP CRS 311°	Rwy ldg TDZE Apt Elev	8794 1645 1661
--	------------------------	-----------------------------	---

ILS or LOC RWY 31

BISMARCK MUNI (BIS)

DME required for procedure entry.		MALSR	MISSED APPROACH: Climb to 2800 then climbing right turn to 3600 direct BIS VOR/DME and hold.
Autopilot coupled approach NA below 2680. For inop ALS, increase S-LOC 31 OFTEN FIX Cat C/D minimums visibility to RVR 5500.			

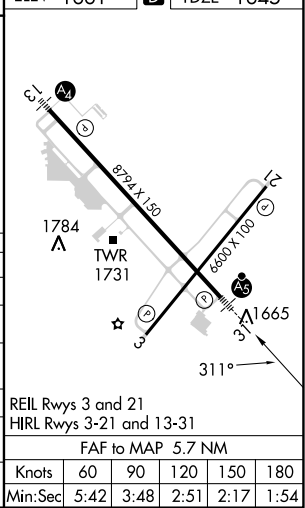
ATIS 119.35	BISMARCK APP CON* 126.3 298.9	BISMARCK TOWER* 118.3 (CTAF) 0 257.8	GND CON 121.9	UNICOM 122.95
-----------------------	---	--	-------------------------	-------------------------



NC-1, 31 OCT 2024 to 28 NOV 2024

NC-1, 31 OCT 2024 to 28 NOV 2024

ELEV 1661	D	TDZE 1645		
2800	3600	BIS		
Use I-BIS DME when on the localizer course.	ICONO INT I-BIS 7.3	4 NM Holding Pattern		
OFTEN INT I-BIS 3.5	3500			
*LOC only.	*I-BIS 2.6	131° → 6000		
	I-BIS 1.6	← 311° ← 3500		
		← 3500		
		GS 3.00°		
		TCH 48		
	1 NM	0.9 NM		
		3.8 NM		
CATEGORY	A	B	C	D
S-ILS 31		1845/24	200 (200-½)	
S-LOC 31	2300/24	655 (700-½)	2300-1¾	655 (700-1¾)
CIRCLING	2300-1	639 (700-1)	2460-2¼ 799 (800-2¼)	2460-2½ 799 (800-2½)
OFTEN FIX MINIMUMS (DUAL VOR RECEIVERS OR DME REQUIRED)				
S-LOC 31	2020/24	375 (400-½)	2020/35	375 (400-¾)
CIRCLING	2240-1	579 (600-1)	2460-2¼ 799 (800-2¼)	2460-2½ 799 (800-2½)



REIL Rwy 3 and 21				
HIRL Rwy 3-21 and 13-31				
FAF to MAP 5.7 NM				
Knots	60	90	120	150
Min:Sec	5:42	3:48	2:51	2:17