

| | | |
|-------------|----------|-------------|
| APP CRS | Rwy Idg | 3787 |
| 202° | TDZE | 4152 |
| | Apt Elev | 4154 |

RNAV (GPS) RWY 20

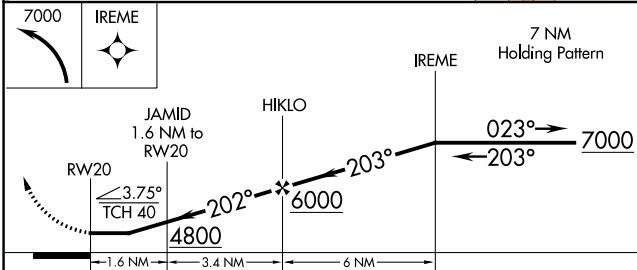
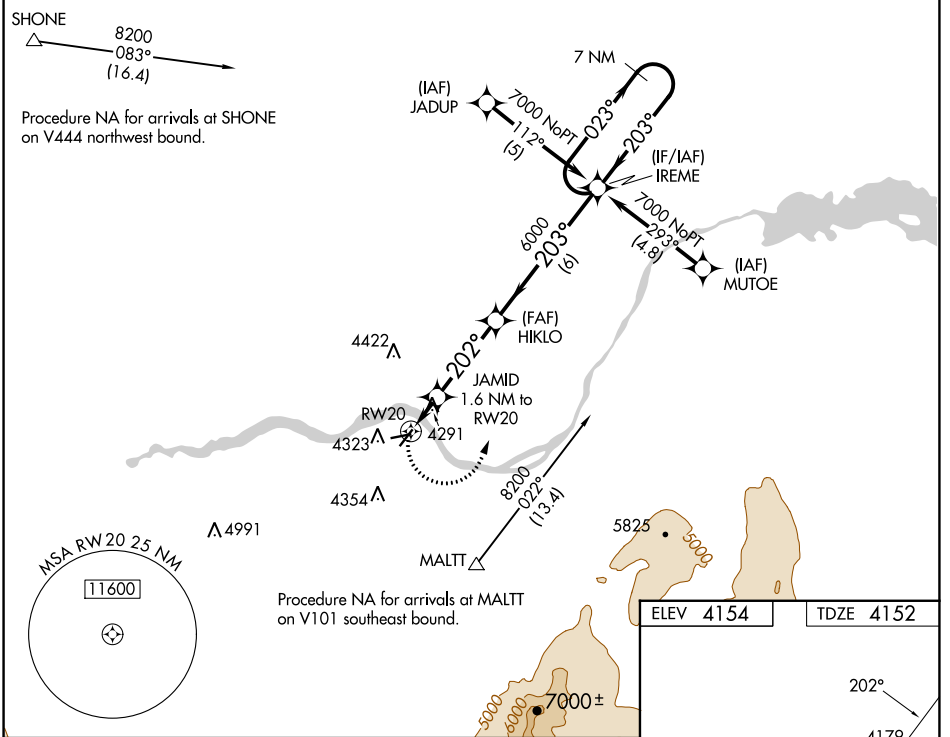
BURLEY MUNI (BYI)

RNP APCH-GPS.

Procedure NA at night.
Rwy 20 helicopter visibility reduction below 1 SM NA.

MISSED APPROACH: Climbing left turn to 7000 direct IREME and hold, continue climb-in-hold to 7000.

| | | |
|------------------------|---|-----------------------|
| ASOS 135.575 | TWIN FALLS APP CON * 126.7 353.75 | CTAF 122.90 |
|------------------------|---|-----------------------|



| | |
|-----------|-----------|
| ELEV 4154 | TDZE 4152 |
|-----------|-----------|

7000

4179

4167

4202

4217

4245±

4072 X 7.5

4092 X 8.0

4038 X 9.0

REIL Rwy 20

MIRL Rwy 2-20 and 6-24

| CATEGORY | A | B | C | D |
|----------|--------|-------------|-------------------------|----|
| LNVA MDA | 4560-1 | 408 (500-1) | 4560-1½ 408 (500-1½) | NA |
| CIRCLING | 4660-1 | 506 (600-1) | 4740-1½ 586 (600-1½) | NA |

NW-1, 31 OCT 2024 to 28 NOV 2024

NW-1, 31 OCT 2024 to 28 NOV 2024