

LOC I-SYD 111.3	APP CRS 032°	Rwy ldg TDZE Apt Elev	10165 5328 5344
---------------------------	------------------------	-----------------------------	--

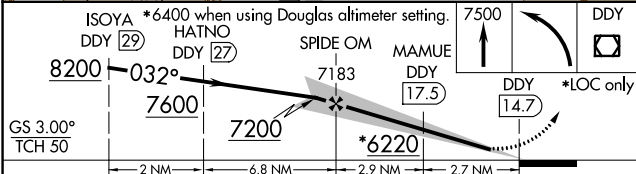
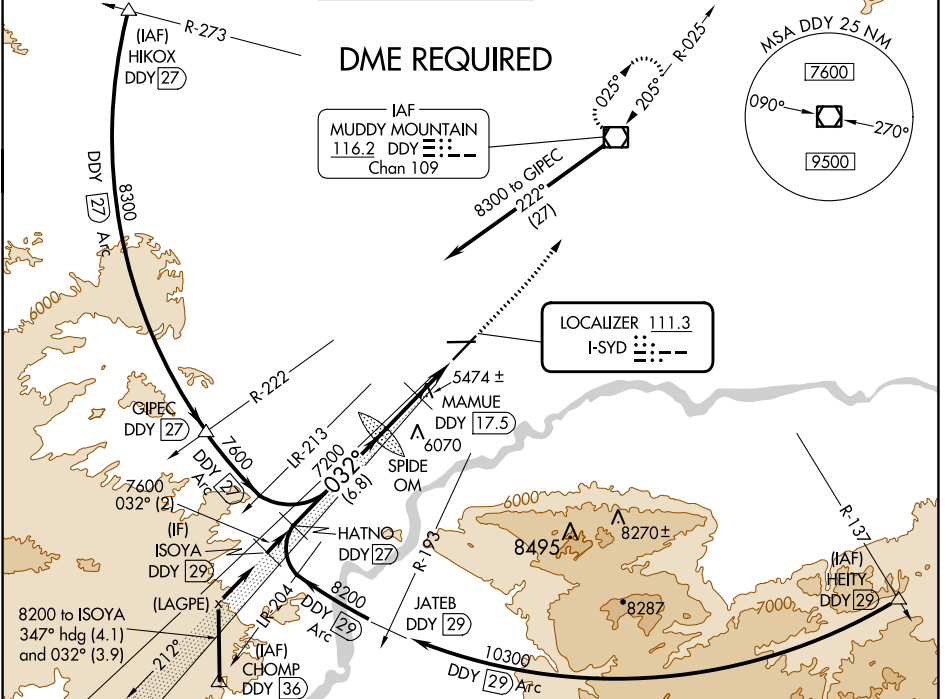
ILS or LOC RWY 3

CASPER/NATRONA COUNTY INTL (CPR)

DME from DDY VOR/DME. Simultaneous reception of I-SYD and DDY DME required. When local altimeter setting not received, use Douglas altimeter setting and increase DA to 5697 feet and all MDA's 180 feet, increase S-ILS visibility all Cats ¼ SM and S-LOC visibility Cat B, C, D and Circling Cats B, C, D visibility ½ SM, increase MAMUE FIX MINIMUM Circling visibility Cat C ½ SM and Cat D ¼ SM. For inoperative MALSRS when using Douglas altimeter setting increase S-ILS visibility all Cats to 1½ mile. MAMUE FIX MINIMUMS: For inoperative MALSRS, increase S-LOC visibility Cats C, and D to 1½ mile. #RVR 1800 authorized with use of FD or HUD to DA.

MALSRS MISSED APPROACH: Climb to 7500 then left turn direct DDY VOR/DME and hold.

ATIS 126.15	CASPER APP CON * 120.65 354.1	CASPER TOWER * 118.3 (CTAF) 257.8	GND CON 121.9	CLNC DEL 121.9 257.8	UNICOM 122.95
-----------------------	---	---	-------------------------	--------------------------------	-------------------------



ELEV 5344	TDZE 5328
<p>REIL Rwy 21</p> <p>HIRL Rwys 3-21 and 8-26</p> <p>032°</p> <p>0.4% UP</p> <p>8679 X 150</p> <p>7015 X 150</p> <p>TWR 5400</p>	
FAF to MAP 5.6 NM	
Knots	60 90 120 150 180
Min:Sec	5:36 3:44 2:48 2:14 1:52

CATEGORY	A	B	C	D
S-ILS 3	# 5528/24 200 (200-½)			
S-LOC 3	6220/40	892 (900-¾)	6220-2	892 (900-2)
CIRCLING	6220-1¼	876 (900-1¼)	6220-2½ 876 (900-2½)	6220-2¾ 876 (900-2¾)
MAMUE FIX MINIMUMS				
S-LOC 3	5740/24	412 (400-½)	5740/40	412 (400-¾)
CIRCLING	5740-1 396 (400-1)	5800-1 456 (500-1)	5860-1½ 516 (600-1½)	6200-2¾ 856 (900-2¾)

NW-1, 31 OCT 2024 to 28 NOV 2024

NW-1, 31 OCT 2024 to 28 NOV 2024