

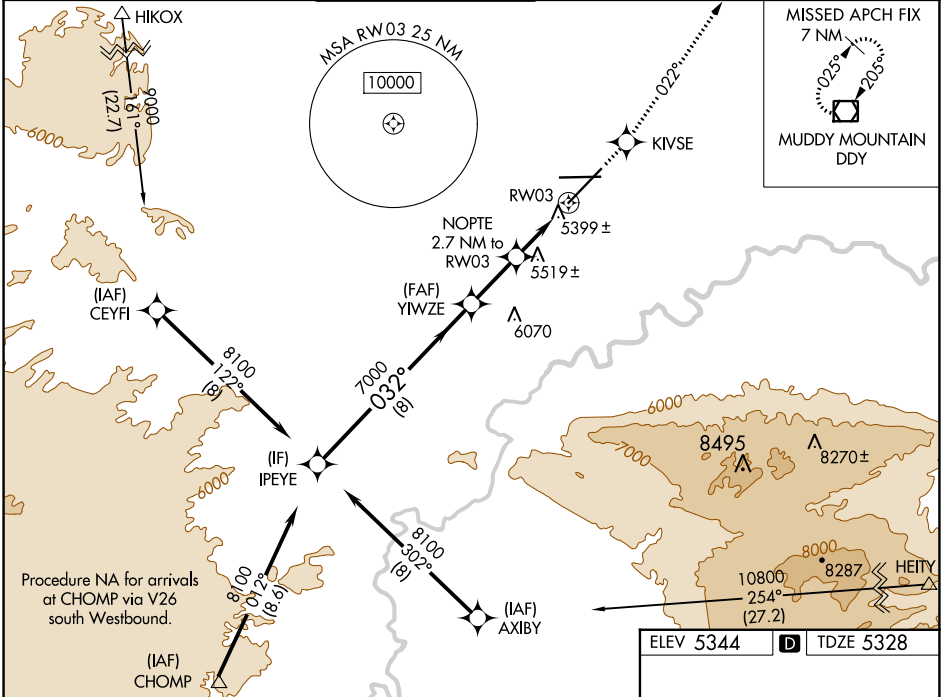
WAAS CH 73006 W03A	APP CRS 032°	Rwy Idg 10165 TDZE 5328 Apt Elev 5344
--	------------------------	--

RNAV (GPS) RWY 3

CASPER/NATRONA COUNTY INTL (C'PR)

⚠ For inoperative MALSR, increase LPV all Cats visibility to 1 mile. ⚠ For uncompensated Baro-VNAV systems, LNAV/VNAV NA below -25°C (-13°F) or above 38°C (100°F). DME/DME RNP-0.3 NA.	MALSR 	MISSED APPROACH: Climb to 7500 direct KIVSE and via track 022° to DDY VOR/DME and hold.
---	-----------	---

ATIS 126.15	CASPER APP CON * 120.65 354.1	CASPER TOWER * 118.3 (CTAF) 0 257.8	GND CON 121.9	CLNC DEL 121.9 257.8	UNICOM 122.95
-----------------------	---	---	-------------------------	--------------------------------	-------------------------



NW-1, 31 OCT 2024 to 28 NOV 2024

NW-1, 31 OCT 2024 to 28 NOV 2024

Procedure Turn NA	YIWZE	NOPT 2.7 NM to RW03	KIVSE	tr 022°	DDY
8100	032°	7000	*1.3 NM to RW03	RW03	*LNAV only
GP 3.00°	TCH 52	*6240	1.4 NM	1.3 NM	
	8 NM	2.3 NM			
CATEGORY	A	B	C	D	
LPV DA		5643/24	315 (300-½)		
LNAV/VNAV DA		5691/40	363 (400-¾)		
LNAV MDA	5780/24	452 (500-½)	5780/40 452 (500-¾)	5780/50 452 (500-1)	
CIRCLING	5780-1 436 (500-1)	5800-1 456 (500-1)	5860-1½ 516 (600-1½)	6200-2¾ 856 (900-2¾)	

