

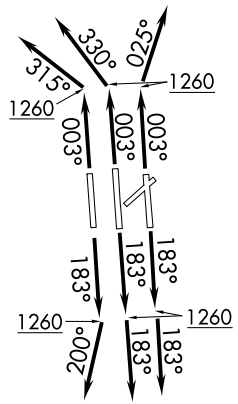
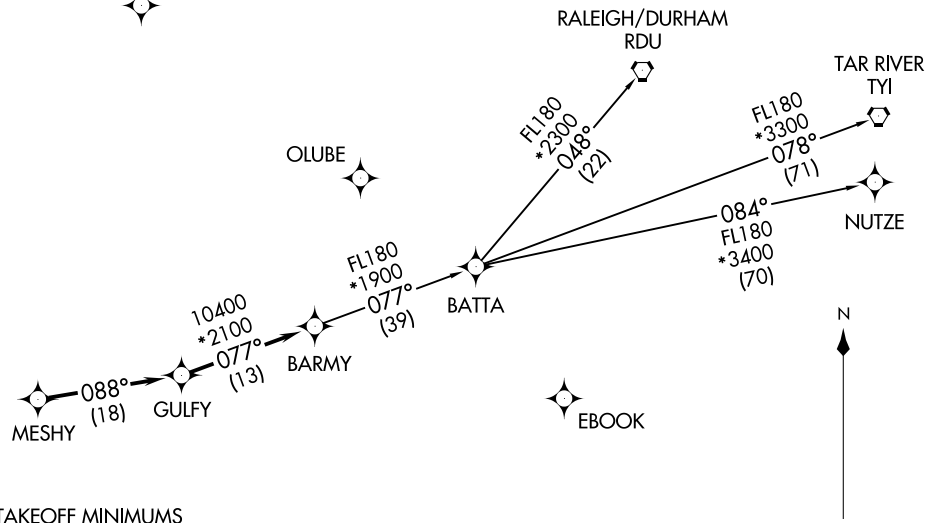
BARMY FIVE DEPARTURE (RNAV)  
(BARMY5.BARMY) 21MAR24

CHARLOTTE, NORTH CAROLINA  
CHARLOTTE/DOUGLAS INTL (CLT)

CHARLOTTE DEP CON  
124.0 307.8  
D-ATIS DEP  
132.1  
CLNC DEL  
127.15 348.6  
CPDLC  
GND CON  
121.8 348.6 (WEST)  
121.9 348.6 (EAST)  
CHARLOTTE TOWER  
118.1 257.8 (Rwy 18L-36R)  
126.4 257.8 (Rwy 18C-36C)  
133.35 257.8 (Rwy 18R-36L)

**TOP ALTITUDE:**  
**8000**

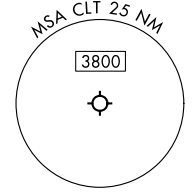
RNAV 1 - DME/DME/IRU or GPS.  
RADAR required.



**TAKEOFF MINIMUMS**

Rwys 18L/C/R, 36C/R: Standard with minimum climb of 500' per NM to 1260.  
Rwy 36L: Standard with minimum climb of 500' per NM to 1400.

- NOTE: For turbo jets only.
- NOTE: If unable to accept climb rates, advise ATC on initial contact.
- NOTE: Transponder code will be issued via PDC or Charlotte CLNC DEL.
- NOTE: Accelerate to 250K, if unable advise ATC. Upon reaching 10000 MSL, accelerate to and maintain 280K, if unable advise ATC.



(CONTINUED ON FOLLOWING PAGE)

NOTE: Chart not to scale.

(BARMY5.BARMY) 24081  
BARMY FIVE DEPARTURE (RNAV)

AL-78 (FAA)  
CHARLOTTE/DOUGLAS INTL (CLT)  
CHARLOTTE, NORTH CAROLINA

# BARMY FIVE DEPARTURE (RNAV)



## DEPARTURE ROUTE DESCRIPTION SEE ADDITIONAL REQUIREMENTS ON AAUP

TAKEOFF RUNWAYS 18L/C: Climb on heading 183° to 1260, then on heading 183° or as assigned by ATC on RADAR vectors to MESHY, thence. . . .

TAKEOFF RUNWAY 18R: Climb on heading 183° to 1260, then on heading 200° or as assigned by ATC on RADAR vectors to MESHY, thence. . . .

TAKEOFF RUNWAY 36L: Climb on heading 003° to 1260, then on heading 315° or as assigned by ATC on RADAR vectors to MESHY, thence. . . .

TAKEOFF RUNWAY 36C: Climb on heading 003° to 1260, then on heading 330° or as assigned by ATC on RADAR vectors to MESHY, thence. . . .

TAKEOFF RUNWAY 36R: Climb on heading 003° to 1260, then on heading 025° or as assigned by ATC on RADAR vectors to MESHY, thence. . . .

. . . on depicted route to BARMY, then on assigned transition. Maintain 8000.  
Expect clearance to filed altitude within 10 minutes after departure.

NUTZE TRANSITION (BARMY5.NUTZE)

RALEIGH/DURHAM TRANSITION (BARMY5.RDU)

TAR RIVER TRANSITION (BARMY5.TYI)

SE-2, 31 OCT 2024 to 28 NOV 2024

SE-2, 31 OCT 2024 to 28 NOV 2024