

LOC I-DQG <b>111.7</b>	APP CRS <b>003°</b>	Rwy Idg <b>10000</b>
		TDZE <b>707</b>
		Apt Elev <b>748</b>

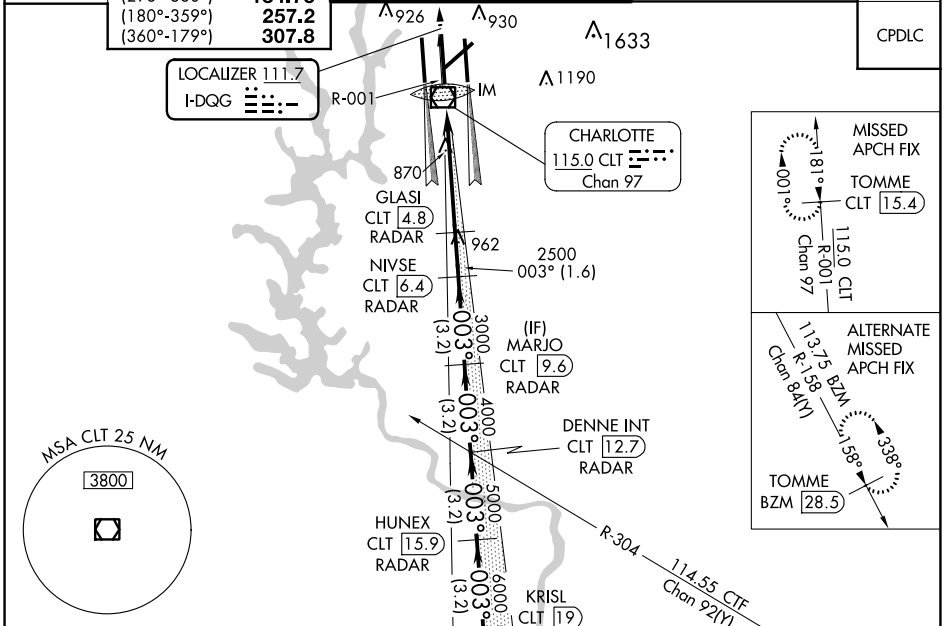
# ILS RWY 36C (CAT II & III)

CHARLOTTE/DOUGLAS INTL (CLT)

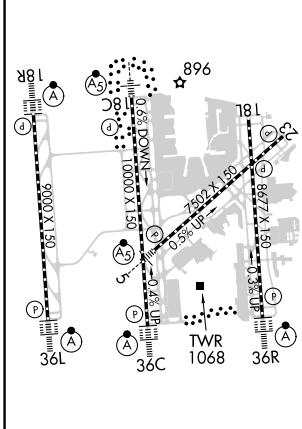
**RADAR required for procedure entry. DME or RADAR required.** ALSF-2 MISSED APPROACH: Climb to 3000 on CLT VOR/DME R-001 to TOMME/CLT 15.4 DME and hold.

Simultaneous approach authorized.  
DQG ILS LLZ Rwy 36C unusable for rollout guidance.

D-ATIS ARR <b>121.15</b> DEP <b>132.1</b>	CHARLOTTE APP CON (001°-119°) <b>128.32</b> (120°-295°) <b>120.05</b> (296°-360°) <b>134.75</b> (180°-359°) <b>257.2</b> (360°-179°) <b>307.8</b>	CHARLOTTE TOWER (Rwys 18L-36R) <b>118.1 257.8</b> (Rwy 18C-36C) <b>126.4 257.8</b> (Rwy 18R-36L) <b>133.35 257.8</b>	GND CON <b>121.8 348.6</b> (WEST) <b>121.9 348.6</b> (EAST)	CLNC DEL <b>127.15</b> <b>348.6</b>
---	--	---	---	---



ELEV 748	<b>D</b>	TDZE 707
----------	----------	----------



HIRL all Rwys  
REIL Rwys 18L and 23  
TDZ/CL Rwys 18R, 36L, 36C and 36R

3000	CLT R-001	TOMME CLT 15.4	VGSI and ILS glidepath not coincident (VGSI Angle 3.00/TCH 72).				SOLMN CLT 22.2
			GLASI CLT 4.8	NIVSE CLT 6.4	DENNE INT CLT 12.7	HUNEX CLT 15.9	KRISL CLT 19
			MARJO CLT 9.6	SOLMN CLT 22.2			
			IM 809				
							GS 3.00° TCH 57

**CATEGORY II & III ILS - SPECIAL AIRCREW & AIRCRAFT CERTIFICATION REQUIRED**

SE-2, 31 OCT 2024 to 28 NOV 2024

SE-2, 31 OCT 2024 to 28 NOV 2024