

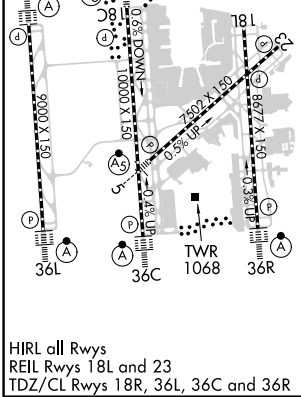
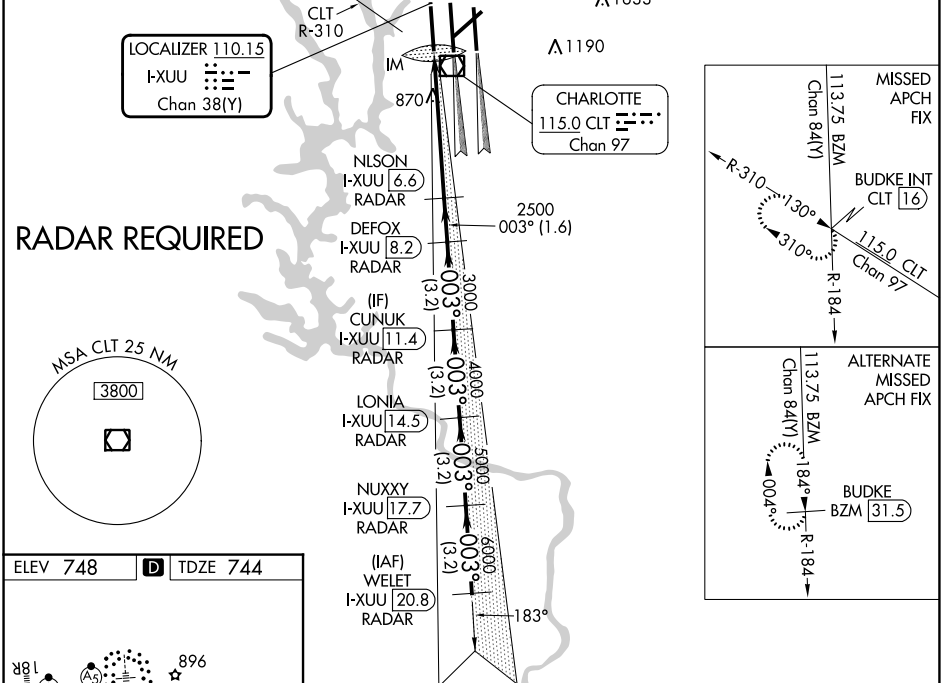
LOC/DME I-XUU 110.15 Chan 38(Y)	APP CRS 003°	Rwy Idg TDZE 744 Apt Elev 748	9000
---	------------------------	---	-------------

ILS RWY 36L (SA CAT I)

CHARLOTTE/DOUGLAS INTL (CLT)

⚠ Simultaneous approach authorized. ⚠ DME or RADAR required. Requires specific OPSPEC, MSPEC, or LOA approval and use of HUD to DH.	ALSIF-2 	MISSED APPROACH: Climb to 1200 then climbing left turn to 4000 and on CLT VOR/DME R-310 to BUDKE INT/CLT 16 DME and hold.
	D-ATIS ARR 121.15 DEP 132.1	CHARLOTTE APP CON (001°-119°) 128.32 (120°-295°) 120.05 (296°-360°) 134.75 (180°-359°) 257.2 (360°-179°) 307.8

GND CON 121.8 348.6 (WEST) 121.9 348.6 (EAST)	CLNC DEL 127.15 348.6
---	---



1200	4000	CLT R-310	BUDKE INT	VGSI and ILS glidepath not coincident (VGSI Angle 3.00/TCH 70).	WELET I-XUU [20.8] RADAR
7000	6000	003°	7000	GS 3.00° TCH 55	
2500	3000	4000	5000	6000	
5.3 NM	1.6 NM	3.2 NM	3.2 NM	3.2 NM	
1120°					
CATEGORY A	B		C		D
S-ILS 36L RA 164/14 150 DA 894					

SA CATEGORY I ILS SPECIAL AIRCREW & AIRCRAFT CERTIFICATION REQUIRED

SE-2, 31 OCT 2024 to 28 NOV 2024

SE-2, 31 OCT 2024 to 28 NOV 2024