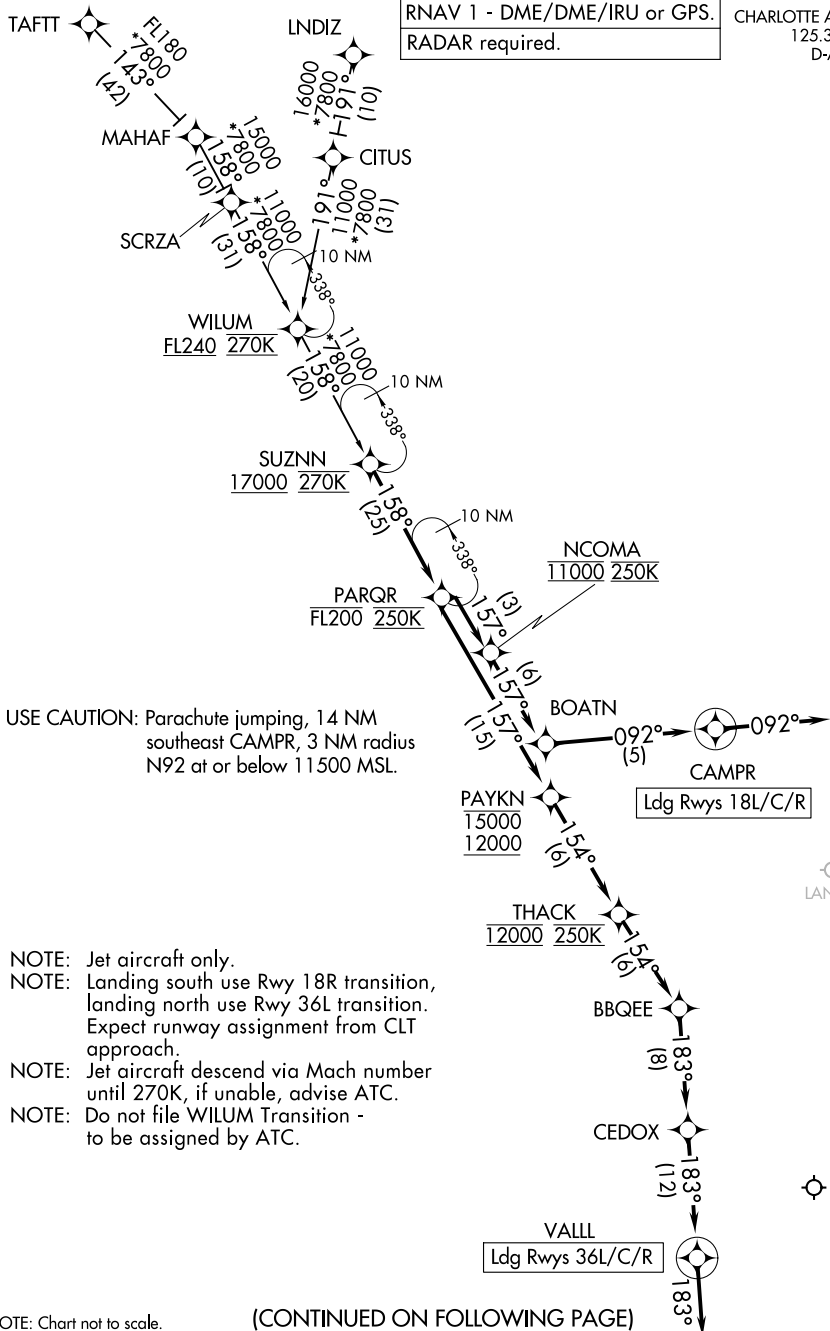


PARQR FOUR ARRIVAL (RNAV)

RNAV 1 - DME/DME/IRU or GPS.
RADAR required.

CHARLOTTE APP CON
125.35 257.2
D-ATIS ARR
121.15



USE CAUTION: Parachute jumping, 14 NM southeast CAMPR, 3 NM radius N92 at or below 11500 MSL.

- NOTE: Jet aircraft only.
- NOTE: Landing south use Rwy 18R transition, landing north use Rwy 36L transition. Expect runway assignment from CLT approach.
- NOTE: Jet aircraft descend via Mach number until 270K, if unable, advise ATC.
- NOTE: Do not file WILUM Transition - to be assigned by ATC.

NOTE: Chart not to scale.

(CONTINUED ON FOLLOWING PAGE)

PARQR FOUR ARRIVAL (RNAV)

SE-2, 31 OCT 2024 to 28 NOV 2024

SE-2, 31 OCT 2024 to 28 NOV 2024

PARQR FOUR ARRIVAL (RNAV)

ARRIVAL ROUTE DESCRIPTION

LNDIZ TRANSITION (LNDIZ.PARQR4)

TAFTT TRANSITION (TAFTT.PARQR4)

WILUM TRANSITION (WILUM.PARQR4)

From SUZNN on track 158° to cross PARQR at or below FL200 and at 250K.

LANDING RUNWAYS 18L/C/R: From PARQR on track 157° to cross NCOMA at 11000 and at 250K, then on track 157° to BOATN, then on track 092° to CAMPR, then on track 092°. Expect RADAR vectors to final approach course.

LANDING RUNWAYS 36L/C/R: From PARQR on track 157° to cross PAYKN between 12000 and 15000, then on track 154° to cross THACK at 12000 and at 250K, then on track 154° to BBQEE, then on track 183° to CEDOX, then on track 183° to VALL, then on track 183°. Expect RADAR vectors to final approach course.

SE-2, 31 OCT 2024 to 28 NOV 2024

SE-2, 31 OCT 2024 to 28 NOV 2024