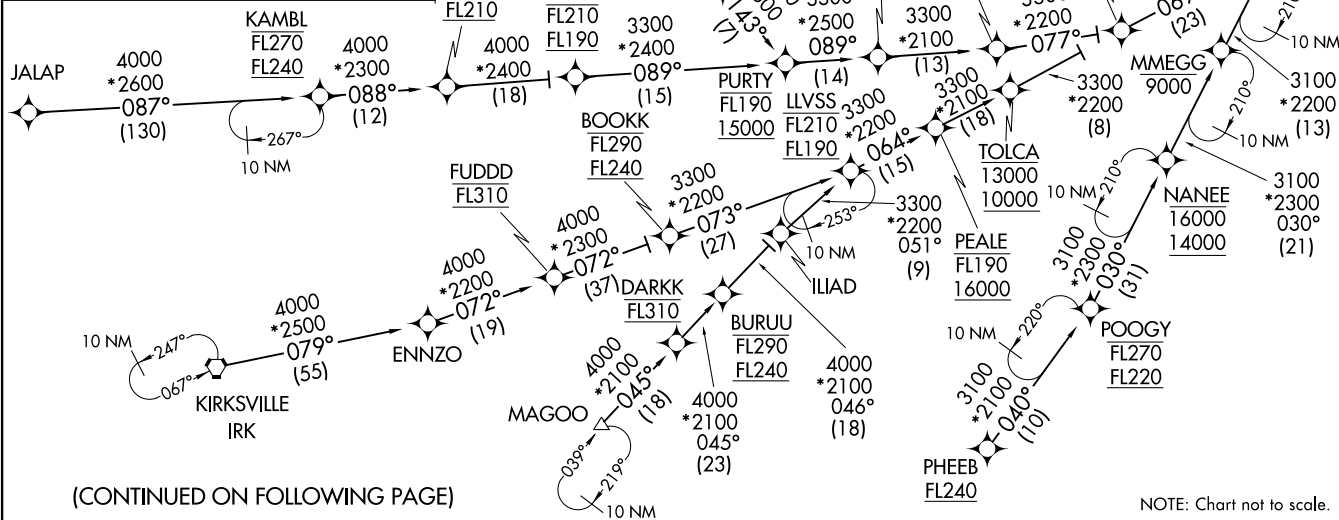


ENDEE SIX ARRIVAL (RNAV) Transition Routes  
(ENDEE. ENDEE6) 31DEC20

- CHUMP TRANSITION (CHUMP.ENDEE6)
- DARKK TRANSITION (DARKK.ENDEE6)
- EDENS TRANSITION (EDENS.ENDEE6)
- FUDD TRANSITION (FUDD.ENDEE6)
- JALAP TRANSITION (JALAP.ENDEE6)
- KAMBL TRANSITION (KAMBL.ENDEE6)
- KIRKSVILLE TRANSITION (IRK.ENDEE6)
- LLVSS TRANSITION (LLVSS.ENDEE6)
- MAGOO TRANSITION (MAGOO.ENDEE6)
- NANEE TRANSITION (NANEE.ENDEE6)
- OHHMY TRANSITION (OHHMY.ENDEE6)
- PHEEB TRANSITION (PHEEB.ENDEE6)
- POOGY TRANSITION (POOGY.ENDEE6)
- UGGLY TRANSITION (UGGLY.ENDEE6)



NOTE: RADAR required.  
 NOTE: RNAV 1.  
 NOTE: DME/DME/IRU or GPS required.  
 NOTE: DARKK, FUDD, NANEE, LLVSS, CHUMP, EDENS, and POOGY transitions: ATC assigned only.

D-ATIS  
 132.75  
 CHICAGO APP CON  
 128.2 353.875

See following page for Arrival Routes.  
**ENDEE**  
 7000 250K  
 6000

(ENDEE. ENDEE6) 20366  
AL-81 (FAA)

CHICAGO MIDWAY INTL (MDW)  
CHICAGO, ILLINOIS

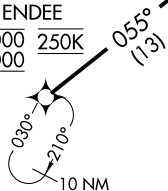
(CONTINUED ON FOLLOWING PAGE)

NOTE: Chart not to scale.

ENDEE SIX ARRIVAL (RNAV) Arrival Routes  
(ENDEE, ENDEE6) 31 DEC 20

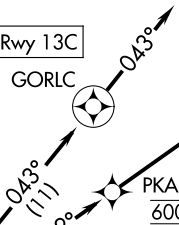
D-ATIS  
132.75  
CHICAGO APP CON  
128.2 353.875

ENDEE  
7000 250K  
6000



KMDW ldg Rwy 13C

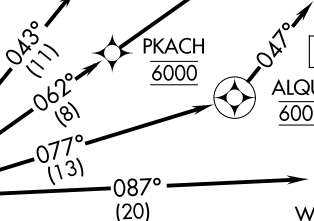
GORLC



PKACH  
6000

ALQUE  
6000

KMDW ldg Rwy 4R

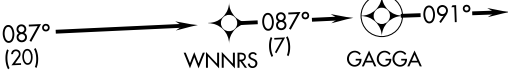


STKNY  
6000

WNNRS  
(7)

GAGGA

KMDW ldg Rwy 31C



NOTE: RADAR required.  
NOTE: RNAV 1.  
NOTE: DME/DME/IRU or GPS required.



ARRIVAL ROUTE DESCRIPTION

From ENDEE on track 055° to cross STKNY at 6000.  
**LANDING RWY 4R:** From STKNY on track 077° to cross ALQUE at 6000, then on track 047°.  
 Expect ILS or LOC RWY 4R approach or RADAR vectors to final approach course.  
**LANDING RWY 13C:** From STKNY on track 043° to GORLC, then on track 043°.  
 Expect RADAR vectors to final approach course.  
**LANDING RWY 22L:** From STKNY on track 062° to cross PKACH at 6000, then on track 062° to TUURN, then on track 090° to WADLL, then on track 095°. Expect RADAR vectors to final approach course.  
**LANDING RWY 31C:** From STKNY on track 087° to WNNRS, then on track 087° to GAGGA, then on track 091°. Expect RADAR vectors to final approach course.

NOTE: Chart not to scale.

CHICAGO, ILLINOIS  
CHICAGO MIDWAY INTL (MDW)

(ENDEE, ENDEE6) 20366  
ENDEE SIX ARRIVAL (RNAV) Arrival Routes

AL-81 (FAA)  
CHICAGO MIDWAY INTL (MDW)  
CHICAGO, ILLINOIS