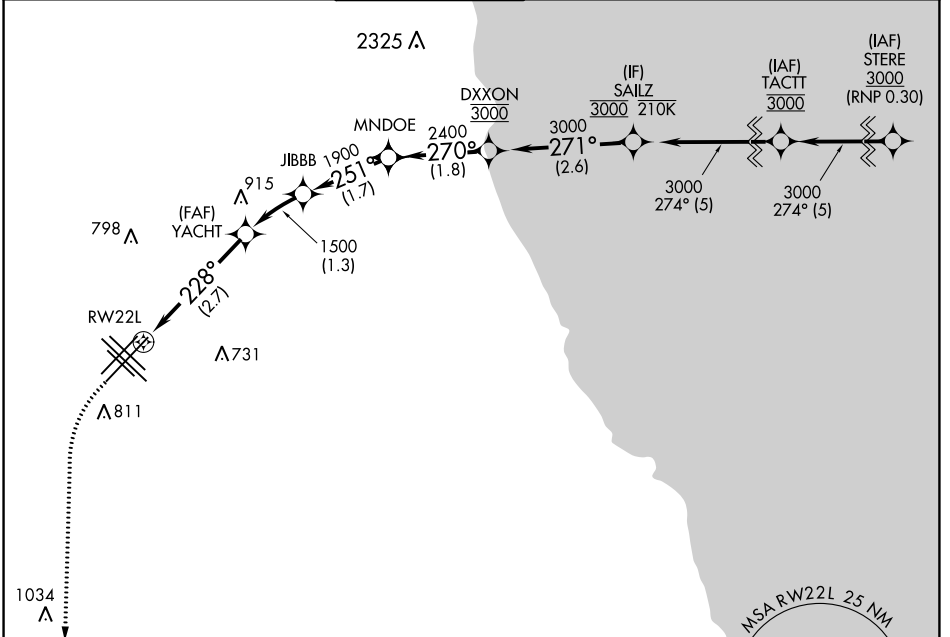


APP CRS	Rwy Idg	5810
228°	TDZE	611
	Apt Elev	620

RNAV (RNP) Y RWY 22L

CHICAGO MIDWAY INTL (MDW)

RNP AR APCH - GPS.			MISSED APPROACH: Climb to 1300 then climbing left turn to 2600 direct EON VORTAC and hold.		
<p>▼ For uncompensated Baro-VNAV systems, procedure NA below -20°C or above 54°C.</p>					
D-ATIS	CHICAGO APP CON	MIDWAY TOWER	GND CON	CLNC DEL	CPDLC
132.75	128.2 353.875	135.2 269.125	118.075	124.625	



EC-3, 31 OCT 2024 to 28 NOV 2024

EC-3, 31 OCT 2024 to 28 NOV 2024

ELEV 620 **D** TDZE 611

HIRL Rwy 4R-22L and 13C-31C
MIRL Rwy 4L-22R, 13L-31R, and 13R-31L
REIL Rwy 4R, 22L, and 31C
RLS Rwy 13C and 31C

MISSED APCH FIX

4 NM

181°

1000'

PEOTONE EON

1300 2600 EON

VGSI and RNAV glidepath not coincident (VGSI Angle 3.00°/TCH 43).

YACHT JIBBB MNDOE DXXON SAILZ

1500 1900 2400 270° 271° 3000

RW22L 228° 1500

2.7 NM 1.3 NM 1.7 NM 1.8 NM 2.6 NM

CATEGORY	A	B	C	D
RNP 0.10 DA		923/45	312 (400-7/8)	
RNP 0.20 DA		949/50	338 (400-1)	
RNP 0.30 DA		992/60	381 (400-1½)	

GP 3.00° TCH 50

AUTHORIZATION REQUIRED