

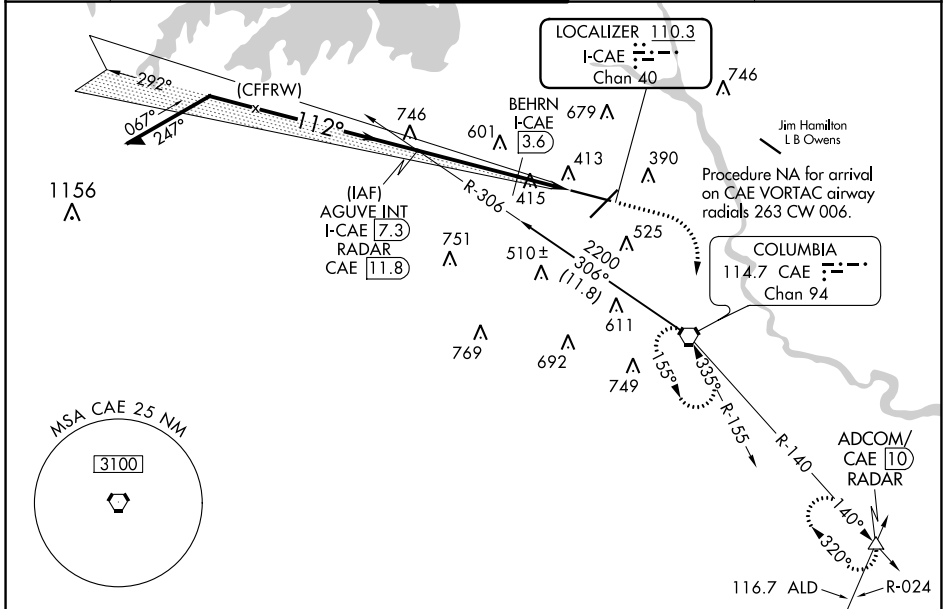
LOC/DME I-CAE 110.3 Chan 40	APP CRS 112°	Rwy Idg 8601 TDZE 236 Apt Elev 236
--	------------------------	---

ILS or LOC RWY 11

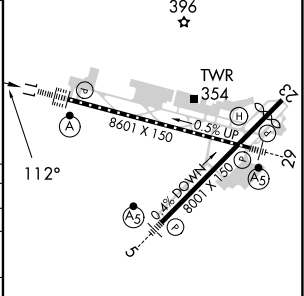
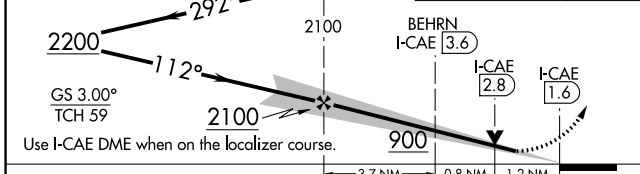
COLUMBIA METRO (CAE)

DME or RADAR required for LOC only.		ALSF-2 	MISSED APPROACH: Climb to 1100 then climbing right turn to 2300 direct CAE VORTAC and hold, continue climb-in-hold to 2300. (TACAN aircraft confine on CAE VORTAC R-140 to ADCOM INT/CAE VORTAC 10 DME and hold NW, right turn, 140° inbound)
<p>▼ For inop ALS, increase S-ILS 11 Cat E visibility to RVR 4000, S-LOC 11 Cats C/D/E visibility to 1½ SM, and BEHRN Minimums S-LOC 11 Cat E visibility to 1¾ SM.</p>			

ATIS 120.15	COLUMBIA APP CON 133.4 285.6 (290°-109°) 124.15 338.2 (110°-289°)	COLUMBIA TOWER 119.5 257.8	GND CON 121.9 348.6	CLNC DEL 119.75
-----------------------	---	--------------------------------------	-------------------------------	---------------------------



AGUVE INT I-CAE 7.3 RADAR	1100	2300	CAE	ELEV 236	TDZE 236
----------------------------------	------	------	-----	----------	----------



CATEGORY	A	B	C	D	E
S-ILS 11	436/18 200 (200-½)				
S-LOC 11	900/24	664 (700-½)	900-1½ 664 (700-1½)		
C CIRCLING	900-1	664 (700-1)	1040-2¼ 804 (900-2¼)	1040-2½ 804 (900-2½)	1040-2¾ 804 (900-2¾)
BEHRN MINIMUMS (DME REQUIRED)					
S-LOC 11	680/24	444 (500-½)	680/45 444 (500-¾)		
C CIRCLING	740-1 504 (600-1)	860-1 624 (700-1)	1040-2¼ 804 (900-2¼)	1040-2½ 804 (900-2½)	1040-2¾ 804 (900-2¾)

REIL Rwy 23	Knots 60 90 120 150 180				
TDZ/CL Rwy 11	Min:Sec 5:42 3:48 2:51 2:17 1:54				
HIRL Rwys 5-23 and 11-29	FAF to MAP 5.7 NM				

SE-2, 31 OCT 2024 to 28 NOV 2024

SE-2, 31 OCT 2024 to 28 NOV 2024