

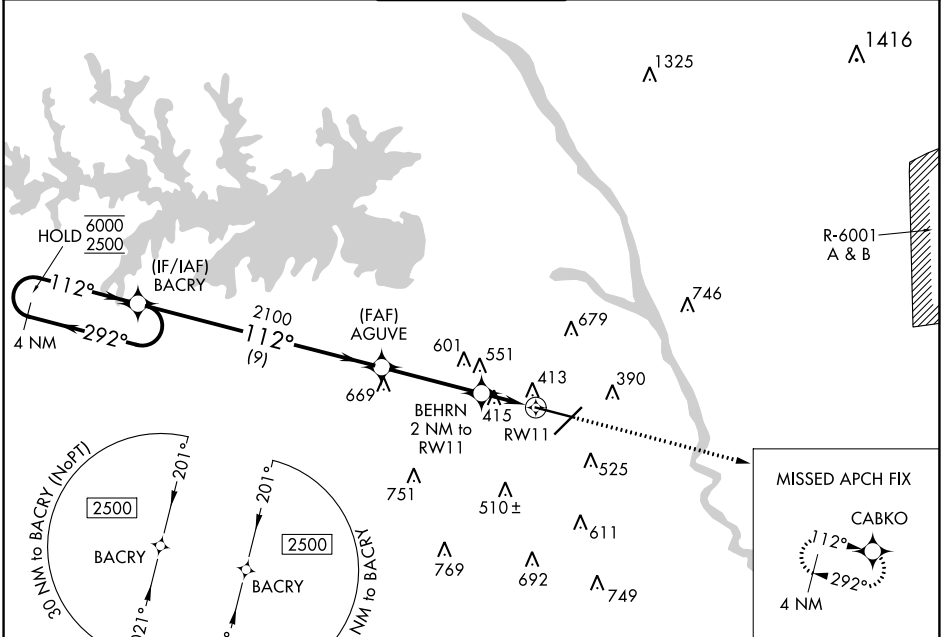
WAAS CH <b>61014</b> <b>W11A</b>	APP CRS <b>112°</b>	Rwy Idg TDZE <b>236</b> Apt Elev <b>236</b>	<b>8601</b>
--	------------------------	---	-------------

# RNAV (GPS) RWY 11

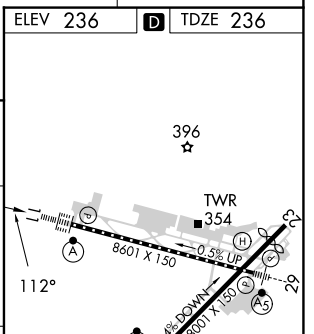
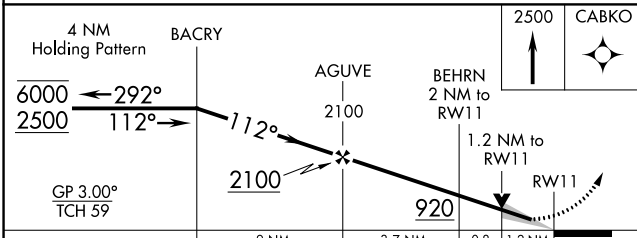
COLUMBIA METRO (CAE)

RNP APCH-GPS.	ALSF-2	MISSED APPROACH: Climb to 2500 direct CABKO and hold.
<p>For uncompensated Baro-VNAV systems, LNAV/VNAV NA below -6°C or above 54°C.</p>		

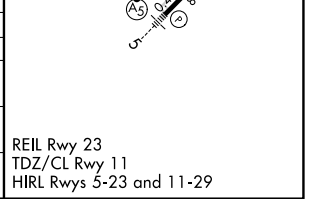
ATIS <b>120.15</b>	COLUMBIA APP CON <b>133.4 285.6</b> (290°-109°) <b>124.15 338.2</b> (110°-289°)	COLUMBIA TOWER <b>119.5 257.8</b>	GND CON <b>121.9 348.6</b>	CLNC DEL <b>119.75</b>
-----------------------	---	--------------------------------------	-------------------------------	---------------------------



ELEV 236	TDZE 236
----------	----------



CATEGORY	A	B	C	D
LPV DA		436/18	200 (200-1/2)	
LNAV/VNAV DA		673/40	437 (500-3/4)	
LNAV MDA	680/24	444 (500-1/2)	680/45	444 (500-7/8)
CIRCLING	740-1 504 (600-1)	860-1 624 (700-1)	1040-2 1/4 804 (900-2 1/4)	1040-2 1/2 804 (900-2 1/2)



SE-2, 31 OCT 2024 to 28 NOV 2024

SE-2, 31 OCT 2024 to 28 NOV 2024