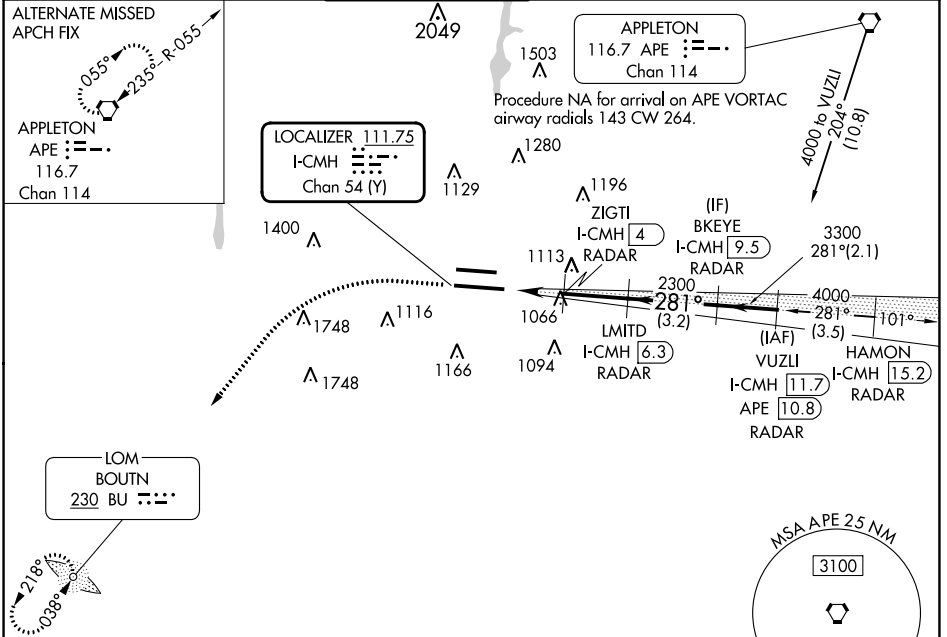


LOC/DME I-CMH <b>111.75</b>	APP CRS <b>281°</b>	Rwy Idg TDZE Apt Elev	<b>10113</b> <b>815</b> <b>815</b>
Chan <b>54 (Y)</b>			

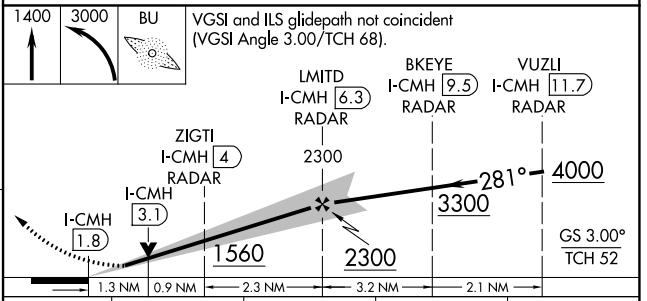
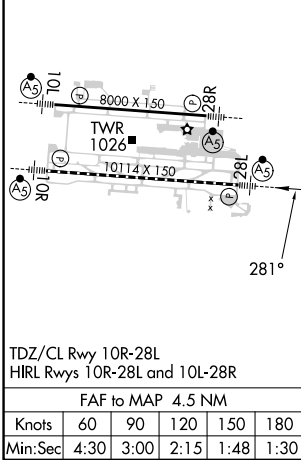
# ILS or LOC RWY 28L

JOHN GLENN COLUMBUS INTL (CMH)

ADF required. DME or RADAR required.		MALSRR	MISSED APPROACH: Climb to 1400 then climbing left turn to 3000 direct BU LOM and hold.		
<p>∇ Simultaneous approach authorized.</p> <p>▲ For inop ALS, increase S-LOC 28L Cat C/D visibility to 1 3/8 SM.</p>					
D-ATIS <b>124.6</b>	COLUMBUS APP CON <b>125.95 371.975</b>	COLUMBUS TOWER <b>132.7 257.8</b>	GND CON <b>121.9 348.6</b>	CLNC DEL <b>126.3</b>	CPDLC



ELEV 815	<b>D</b>	TDZE 815
----------	----------	----------



CATEGORY	A	B	C	D
S-ILS 28L	1015/18 200 (200-1/2)			
S-LOC 28L	1300/24	485 (500-1/2)	1300/50	485 (500-1)
<input checked="" type="checkbox"/> CIRCLING	1340-1	525 (600-1)	1520-2 705 (800-2)	1520-2 1/4 705 (800-2 1/4)

EC-2, 31 OCT 2024 to 28 NOV 2024

EC-2, 31 OCT 2024 to 28 NOV 2024