

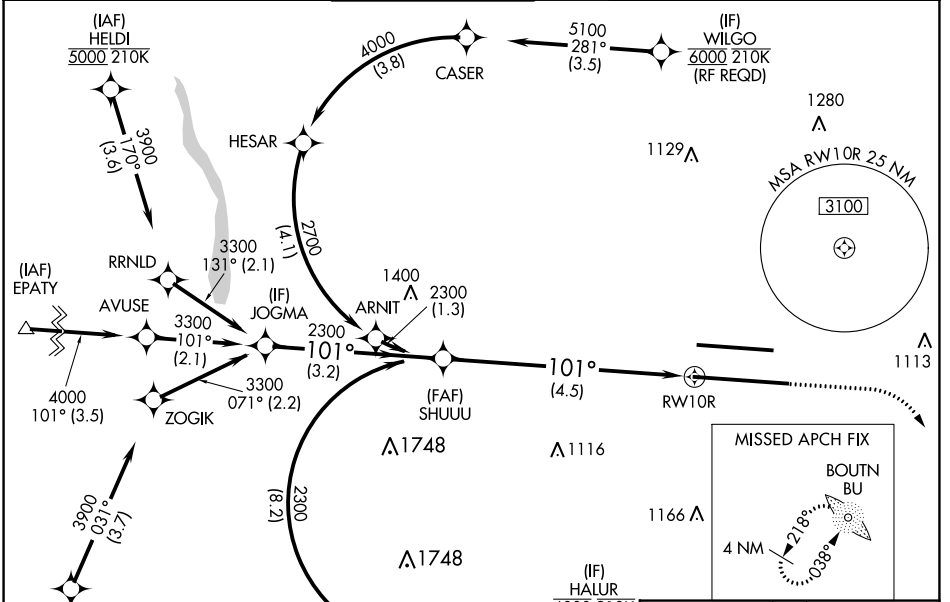
APP CRS	Rwy Idg	<b>10113</b>
<b>101°</b>	TDZE	<b>809</b>
	Apt Elev	<b>815</b>

# RNAV (RNP) Z RWY 10R

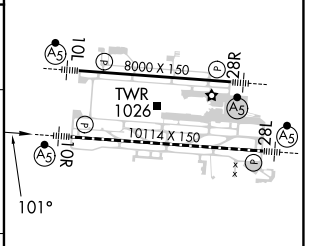
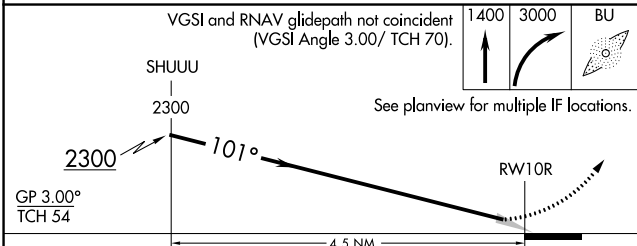
JOHN GLENN COLUMBUS INTL (CMH)

<b>RNP AR APCH.</b> Simultaneous approach authorized. For uncompensated Baro-VNAV systems, procedure NA below -19°C or above 54°C. For inop ALS, increase RNP 0.30 all Cats visibility to RVR 6000.		<b>MALSR</b> 	<b>MISSED APPROACH:</b> Climb to 1400 then climbing right turn to 3000 direct BOUTN LOM and hold.
--	--	------------------	---

D-ATIS	COLUMBUS APP CON	COLUMBUS TOWER	GND CON	CLNC DEL	CPDLC
<b>124.6</b>	<b>125.95 371.975</b>	<b>132.7 257.8</b>	<b>121.9 348.6</b>	<b>126.3</b>	



ELEV	815	<b>D</b>	TDZE	809
------	-----	----------	------	-----



CATEGORY	A	B	C	D
RNP 0.17 DA		1138/26	329 (400-1/2)	
RNP 0.30 DA		1214/40	405 (400-3/4)	

**AUTHORIZATION REQUIRED**

TDZ/CL Rwy 10R-28L	
HIRL Rwy 10R-28L and 10L-28R	

EC-2, 31 OCT 2024 to 28 NOV 2024

EC-2, 31 OCT 2024 to 28 NOV 2024