

WAAS CH 48999 W28A	APP CRS 281°	Rwy Idg TDZE Apt Elev	10113 815 815
--	------------------------	-----------------------------	--

RNAV (GPS) Y RWY 28L

JOHN GLENN COLUMBUS INTL (CMH)

RNP APCH

Simultaneous approach authorized. For uncompensated Baro-VNAV systems, LNAV/VNAV NA below -19°C or above 54°C. LNAV procedure NA during simultaneous operations. Use of FD or AP providing RNAV track guidance required during simultaneous operations. For inop ALS, increase LNAV Cat C/D visibility to 1½ SM.

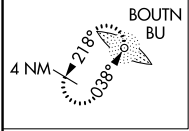
MALSR



MISSED APPROACH: Climb to 1400 then climbing left turn to 3000 direct BOUTN LOM and hold.

D-ATIS 124.6	COLUMBUS APP CON 125.95 371.975	COLUMBUS TOWER 132.7 257.8	GND CON 121.9 348.6	CLNC DEL 126.3	CPDLC
------------------------	---	--------------------------------------	-------------------------------	--------------------------	-------

MISSED APCH FIX



2049 Δ

Δ 1503

1129 Δ

Δ 1280

Δ 1196

Δ 1400

Δ 1748

Δ 1116

Δ 1166

Δ 1094

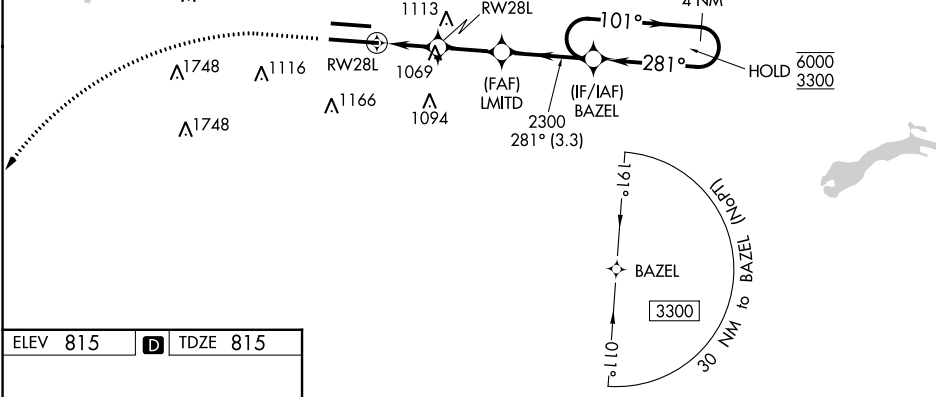
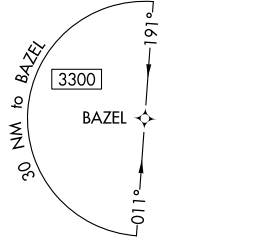
Δ 1069

(FAF) LMITD

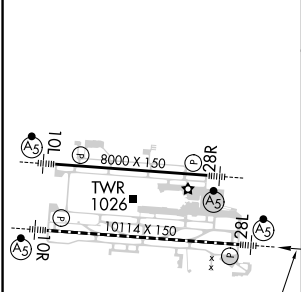
2300

281° (3.3)

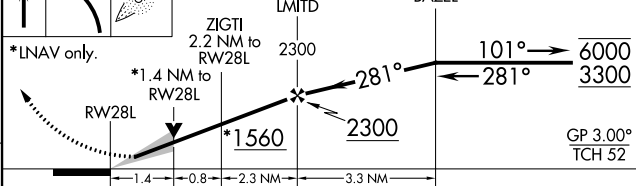
(IF/IAF) BAZEL



ELEV 815	D	TDZE 815
----------	----------	----------



1400 3000 BU VGSI and RNAV glidepath not coincident (VGSI Angle 3.00/TCH 68). 4 NM Holding Pattern



CATEGORY	A	B	C	D
LPV DA		1015/18	200 (200-½)	
LNAV/VNAV DA		1237/40	422 (500-¾)	
LNAV MDA	1320/24	505 (600-½)	1320/55	505 (600-1)
C CIRCLING	1340-1	525 (600-1)	1520-2 705 (800-2)	1520-2¼ 705 (800-2¼)

COLUMBUS, OHIO
Amdt 4 22APR21

40°00'N-82°54'W

JOHN GLENN COLUMBUS INTL (CMH) RNAV (GPS) Y RWY 28L

EC-2, 31 OCT 2024 to 28 NOV 2024

EC-2, 31 OCT 2024 to 28 NOV 2024