

RNAV (GPS) RWY 18

CORPUS CHRISTI NAS (TRUAX FLD) (KNGP)

[USN]

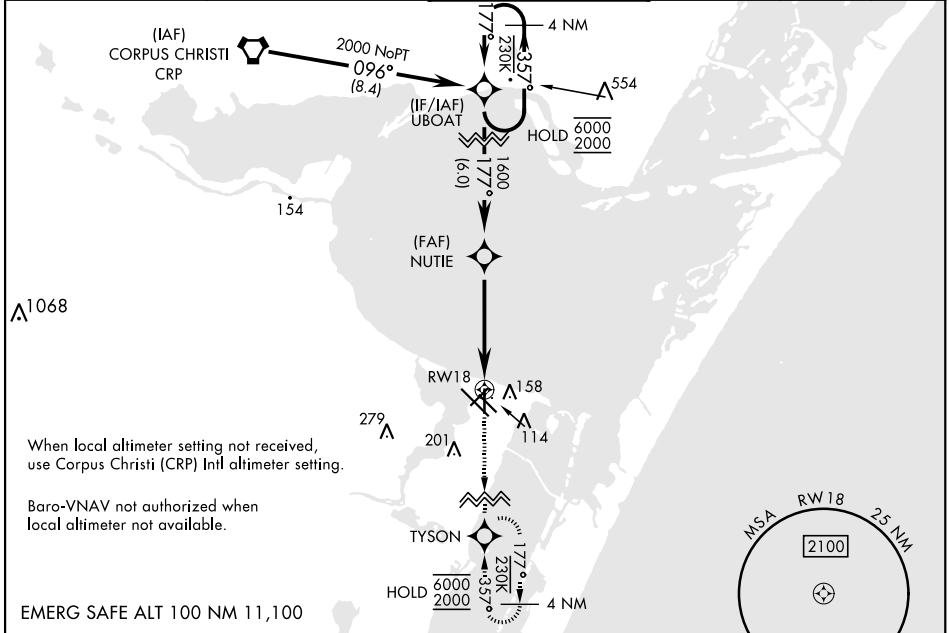
APCH CRS	Rwy ldg	5002
177°	TDZE	18
	Arpt Elev	18

RNP APCH

For uncompensated Baro-VNAV systems, LNAV/VNAV NA below -15° C (5° F) or above 54° C (129° F).

MISSED APPROACH: Climb to 2000 direct TYSON and hold.

ATIS ★ 127.9 290.9	APP CON 128.675 343.75	NAVY CORPUS TOWER ★ 134.85 340.2	GND CON 118.7 257.85	CLNC DEL 314.3	ASR/ PAR
-----------------------	---------------------------	-------------------------------------	-------------------------	-------------------	-------------



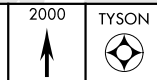
1068

When local altimeter setting not received, use Corpus Christi (CRP) Intl altimeter setting.

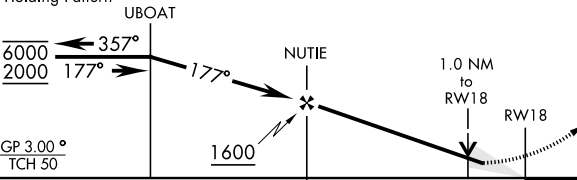
Baro-VNAV not authorized when local altimeter not available.

EMERG SAFE ALT 100 NM 11,100

VDP not authorized when using Corpus Christi (CRP) Intl altimeter setting.

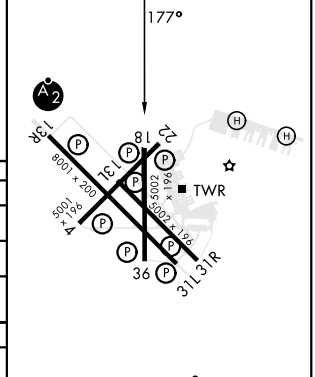


4 NM Holding Pattern



CATEGORY	A	B	C	D
LNAV/VNAV DA	268-¾	250	(300-¾)	275-¾ (300-¾)
LNAV MDA	380-1		362	(400-1)
CIRCLING	460-1	480-1	520-1½	580-2
	442 (500-1)	462 (500-1)	502 (600-1½)	562 (600-2)
CORPUS CHRISTI (CRP) INTL ALTIMETER SETTING				
LNAV MDA	400-1	382 (400-1)	400-1⅞	382 (400-1⅞)
CIRCLING	500-1	482 (500-1)	540-1½	620-2
			522 (600-1½)	602 (700-2)

ELEV	18	TDZE	18
------	----	------	----



HIRL Rwy 4-22, 13R-31L
HIRL Rwy 13L-31R, 18-36
REIL Rwy 4-22, 13L-31R, 18-36, 31L

RNAV (GPS) RWY 18

SC-3, 31 OCT 2024 to 28 NOV 2024

SC-3, 31 OCT 2024 to 28 NOV 2024