

CORPUS CHRISTI, TEXAS

RNAV (GPS) RWY 31L

CORPUS CHRISTI NAS (TRUAX FLD) (KNGP)

[USN]

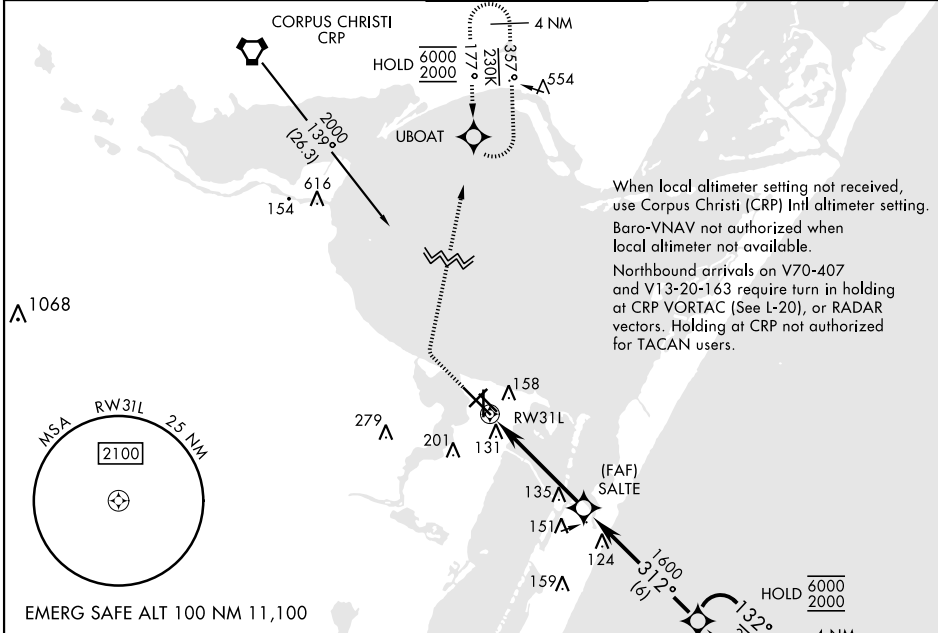
APCH CRS	Rwy Idg	8001
312°	TDZE	17
	Arpt Elev	18

RNP APCH

▼ For uncompensated Baro-VNAV systems, LNAV/VNAV NA below -15°C (5°F) or above 54°C (129°F).

MISSED APPROACH: Climb to 600, then climbing right turn to 2000 direct UBOAT and hold.

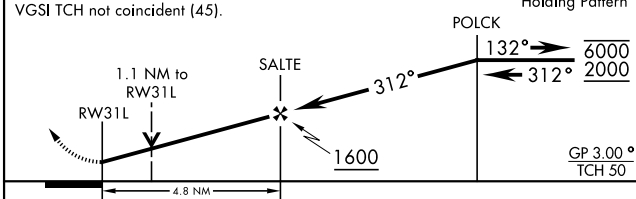
ATIS ★	APP CON	NAVY CORPUS TOWER ★	GND CON	CLNC DEL	ASR/PAR
127.9 290.9	128.675 343.75	134.85 340.2	118.7 257.85	314.3	



When local altimeter setting not received, use Corpus Christi (CRP) Intl altimeter setting. Baro-VNAV not authorized when local altimeter not available.

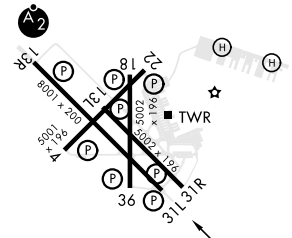
Northbound arrivals on V70-407 and V13-20-163 require turn in holding at CRP VORTAC (See L-20), or RADAR vectors. Holding at CRP not authorized for TACAN users.

600	2000	UBOAT	VDP not authorized when using Corpus Christi (CRP) Intl altimeter setting
-----	------	-------	---



ELEV	18	TDZE	17
------	----	------	----

CATEGORY	A	B	C	D
LNAV/VNAV DA	412-1 1/8		395	(400-1 1/8)
LNAV MDA	420-1	403 (500-1)	420-1 1/8	403 (500-1 1/8)
C CIRCLING	460-1 442 (500-1)	480-1 462 (500-1)	520-1 1/2 502 (600-1 1/2)	580-2 562 (600-2)
CORPUS CHRISTI (CRP) INTL ALTIMETER SETTING				
LNAV MDA	460-1	443 (500-1)	460-1 3/8	443 (500-1 3/8)
C CIRCLING	500-1	482 (500-1)	540-1 1/2 522 (600-1 1/2)	620-2 602 (700-2)



HIRL Rwy 4-22, 13R-31L
 HIRL Rwy 13L-31R, 18-36
 REIL Rwy 4-22, 13L-31R, 18-36, 31L

CORPUS CHRISTI, TEXAS
 Amdt 2 30NOV23

27°42'N-97°17'W

CORPUS CHRISTI NAS (TRUAX FLD) (KNGP)

RNAV (GPS) RWY 31L

SC-3, 31 OCT 2024 to 28 NOV 2024

SC-3, 31 OCT 2024 to 28 NOV 2024