

D-ATIS ARR 133.675  
 DEP 118.125  
 METRO TOWER  
 118.4 (RWY 03L-21R, 03R-21L, 27R)  
 128.75 (RWY 27L)  
 135.0 (RWY 04L-22R, 04R-22L)  
 317.725  
 CLNC DEL  
 120.65  
 CPDLC  
 PDC

**D**

JANUARY 2020  
 ANNUAL RATE OF CHANGE  
 0.0° W

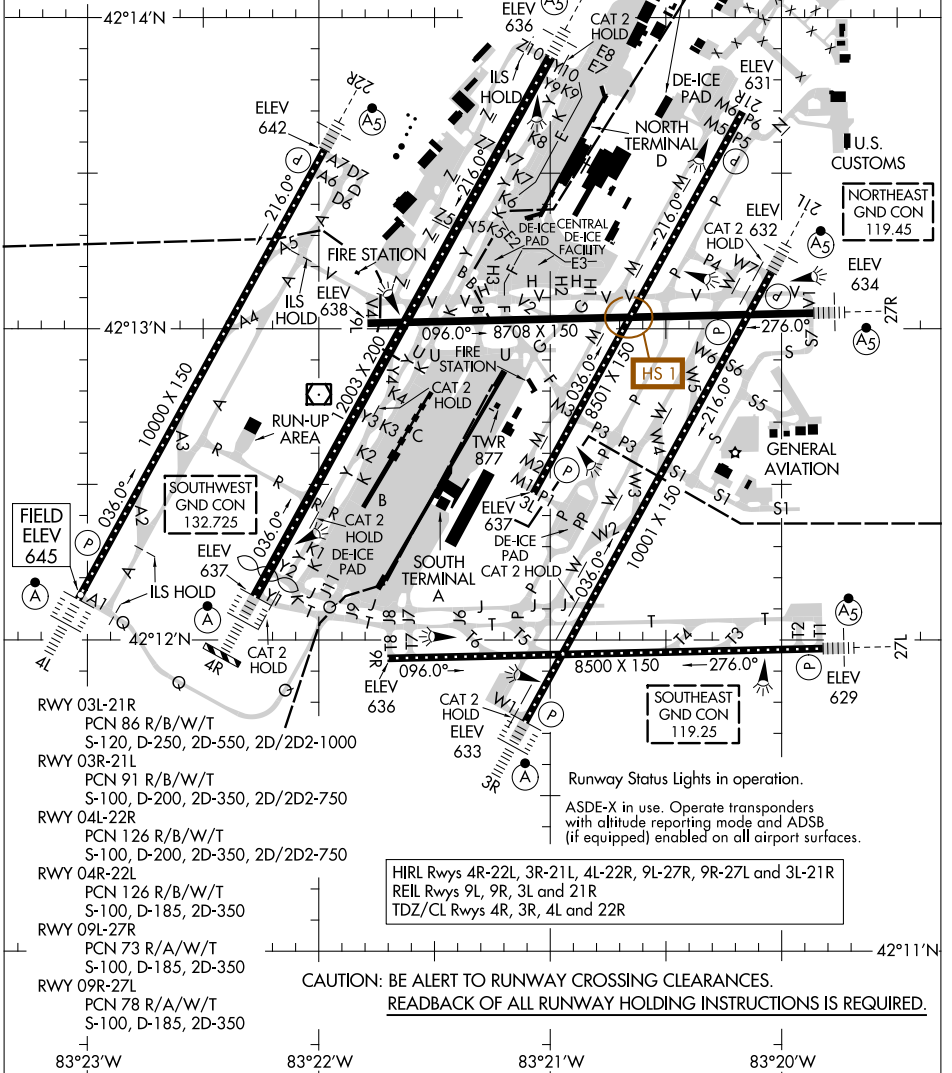
NORTHWEST  
 GND CON  
 121.8

U.S. CUSTOMS AND  
 GENERAL AVIATION

NORTHEAST  
 GND CON  
 119.45

EC-1, 31 OCT 2024 to 28 NOV 2024

EC-1, 31 OCT 2024 to 28 NOV 2024



RWY 03L-21R  
 PCN 86 R/B/W/T  
 S-120, D-250, 2D-550, 2D/2D2-1000

RWY 03R-21L  
 PCN 91 R/B/W/T  
 S-100, D-200, 2D-350, 2D/2D2-750

RWY 04L-22R  
 PCN 126 R/B/W/T  
 S-100, D-200, 2D-350, 2D/2D2-750

RWY 04R-22L  
 PCN 126 R/B/W/T  
 S-100, D-185, 2D-350

RWY 09L-27R  
 PCN 73 R/A/W/T  
 S-100, D-185, 2D-350

RWY 09R-27L  
 PCN 78 R/A/W/T  
 S-100, D-185, 2D-350

HIRL Rwy 4R-22L, 3R-21L, 4L-22R, 9L-27R, 9R-27L and 3L-21R  
 REIL Rwy 9L, 9R, 3L and 21R  
 TDZ/CL Rwy 4R, 3R, 4L and 22R

Runway Status Lights in operation.  
 ASDE-X in use. Operate transponders  
 with altitude reporting mode and ADSB  
 (if equipped) enabled on all airport surfaces.

**CAUTION: BE ALERT TO RUNWAY CROSSING CLEARANCES.  
 READBACK OF ALL RUNWAY HOLDING INSTRUCTIONS IS REQUIRED.**