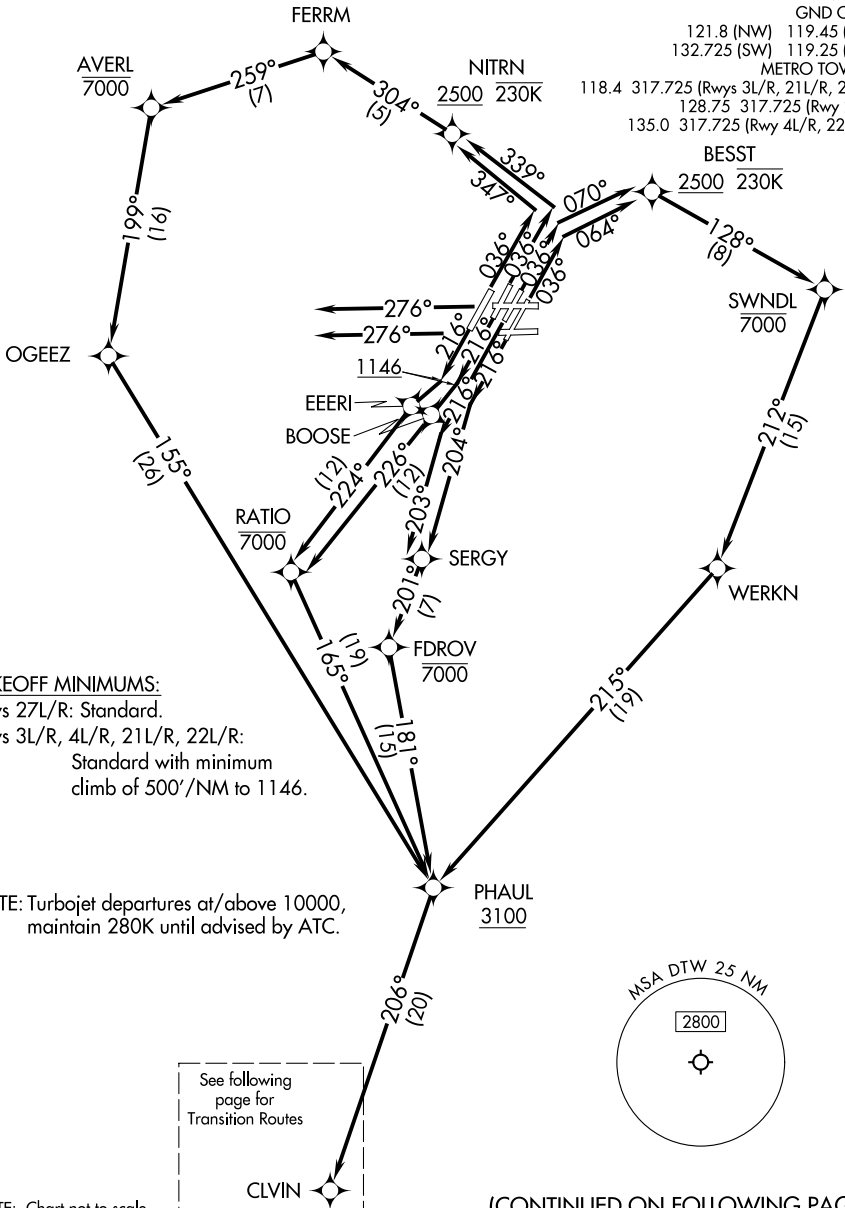


CLVIN THREE DEPARTURE (RNAV) Departure Routes

TOP ALTITUDE:
17000

RNAV 1 - DME/DME/IRU or GPS.
RADAR required.

DETROIT DEP CON
125.525 284.0 (Rwys 4L/R, 22L/R)
132.025 284.0 (Rwys 3L/R, 21L/R, 27L/R)
D-ATIS 118.125
CLNC DEL 120.65
CPDLC
GND CON
121.8 (NW) 119.45 (NE)
132.725 (SW) 119.25 (SE)
METRO TOWER
118.4 317.725 (Rwys 3L/R, 21L/R, 27R)
128.75 317.725 (Rwy 27L)
135.0 317.725 (Rwy 4L/R, 22L/R)



TAKEOFF MINIMUMS:

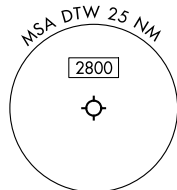
Rwys 27L/R: Standard.

Rwys 3L/R, 4L/R, 21L/R, 22L/R:

Standard with minimum
climb of 500'/NM to 1146.

NOTE: Turbojet departures at/above 10000,
maintain 280K until advised by ATC.

See following
page for
Transition Routes



NOTE: Chart not to scale.

(CONTINUED ON FOLLOWING PAGE)

(CLVIN3.CLVIN) 24137

AL-119 (FAA)

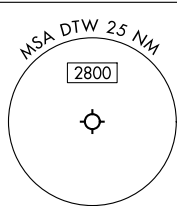
DETROIT METRO WAYNE COUNTY (DTW)

CLVIN THREE DEPARTURE (RNAV) Transition Routes

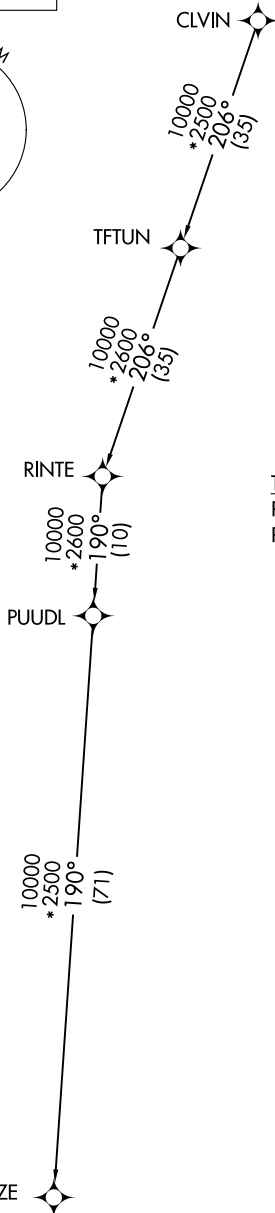
DETROIT, MICHIGAN

**TOP ALTITUDE:
17000**

RNAV 1 - DME/DME/IRU or GPS.
RADAR required.



DETROIT DEP CON
 125.525 284.0 (Rwys 4L/R, 22L/R)
 132.025 284.0 (Rwys 3L/R, 21L/R, 27L/R)
 D-ATIS 118.125
 CLNC DEL 120.65
 CPDLC
 GND CON
 121.8 (NW) 119.45 (NE)
 132.725 (SW) 119.25 (SE)
 METRO TOWER
 118.4 317.725 (Rwys 3L/R, 21L/R, 27R)
 128.75 317.725 (Rwy 27L)
 135.0 317.725 (Rwy 4L/R, 22L/R)



TAKEOFF MINIMUMS:
 Rwys 27L/R: Standard.
 Rwys 3L/R, 4L/R, 21L/R, 22L/R:
 Standard with minimum climb of
 500'/NM to 1146.

NOTE: Turbojet departures at/above 10000,
 maintain 280K until advised by ATC.

EC-1, 31 OCT 2024 to 28 NOV 2024

EC-1, 31 OCT 2024 to 28 NOV 2024

NOTE: Chart not to scale.

(CONTINUED ON FOLLOWING PAGE)

CLVIN THREE DEPARTURE (RNAV) (CLVIN3.CLVIN) 16MAY24

Transition Routes DETROIT, MICHIGAN
DETROIT METRO WAYNE COUNTY (DTW)



DEPARTURE ROUTE DESCRIPTION

SEE ADDITIONAL REQUIREMENTS ON AAUP

TAKEOFF RUNWAY 3L: Climb on heading 036° to intercept course 070° to cross BESST at or above 2500 and at or below 230K, then on track 128° to cross SWNDL at or below 7000, then on track 212° to WERKN, then on track 215° to cross PHAUL at or above 3100, thence....

TAKEOFF RUNWAY 3R: Climb on heading 036° to intercept course 064° to cross BESST at or above 2500 and at or below 230K, then on track 128° to cross SWNDL at or below 7000, then on track 212° to WERKN, then on track 215° to cross PHAUL at or above 3100, thence....

TAKEOFF RUNWAY 4L: Climb on heading 036° to intercept course 347° to cross NITRN at or above 2500 and at or below 230K, then on track 304° to FERRM, then on track 259° to cross AVERL at or below 7000, then on track 199° to OGEEZ, then on track 155° to cross PHAUL at or above 3100, thence....

TAKEOFF RUNWAY 4R: Climb on heading 036° to intercept course 339° to cross NITRN at or above 2500 and at or below 230K, then on track 304° to FERRM, then on track 259° to cross AVERL at or below 7000, then on track 199° to OGEEZ, then on track 155° to cross PHAUL at or above 3100, thence....

TAKEOFF RUNWAY 21L: Climb on heading 216° to intercept course 204° to SERGY, then on track 201° to cross FDROV at or below 7000, then on track 181° to cross PHAUL at or above 3100, thence....

TAKEOFF RUNWAY 21R: Climb on heading 216° to intercept course 203° to SERGY, then on track 201° to cross FDROV at or below 7000, then on track 181° to cross PHAUL at or above 3100, thence....

TAKEOFF RUNWAY 22L: Climb on heading 216° to 1146, then direct BOOSE, then on track 226° to cross RATIO at or below 7000, then on track 165° to cross PHAUL at or above 3100, thence....

TAKEOFF RUNWAY 22R: Climb on heading 216° to 1146, then direct EEERI, then on track 224° to cross RATIO at or below 7000, then on track 165° to cross PHAUL at or above 3100, thence....

TAKEOFF RUNWAYS 27L/R: Climb on heading 276° or as assigned by ATC, for RADAR vectors to cross PHAUL at or above 3100, thence....

....on track 206° to CLVIN, then on (transition). Maintain 17000, expect filed altitude 10 minutes after departure.

STAZE TRANSITION (CLVIN3.STAZE):

EC-1, 31 OCT 2024 to 28 NOV 2024

EC-1, 31 OCT 2024 to 28 NOV 2024